



**“Everyone talks about **growth**,  
but what does it mean at Ivey?”**

Adwoa Mould-Mograbi—MBA'09 Candidate

## Richard Ivey School of Business 2008 Annual Report

- 03 Perspectives on Growth
- 08 Message from the Dean
- 09 At the Heart of Growth
- 11 Ivey Degree Programs
- 21 Executive Development
- 22 Research Centres
- 27 A Year in Review
- 30 Message from the Board Chair
- 31 Gifts in Action
- 33 Operating Budget
- 35 Boards and Councils
- 40 Ivey's Investors
  - Lifetime Giving*
  - Class Giving*
  - Friends, Faculty & Staff*
  - Ivey Legacies*
  - Corporate Donors*
  - Matching Gift Companies*
- 65 Ivey at a Glance

Experience Ivey's new annual report at [ivey.uwo.ca/ar](http://ivey.uwo.ca/ar)

Every effort has been made to ensure complete accuracy of this publication. If errors are noticed, please contact the Ivey Annual Fund office at 519-661-3399 or toll-free in North America at 1-877-IVEY-UWO and accept our apologies in advance. Each and every gift makes a difference and is deeply appreciated by the School.

# Perspectives on Growth

**Ivey's Cross-Enterprise Leadership strategy has set the foundation for growth. Our programs, faculty and research centres have grown and there is more ahead.**

**But as any business knows, growth for its own sake is rarely sustainable. At Ivey we believe growth is about doing better, as well as doing more.**

**So, let's talk about growth.**



**“Ivey’s Cross-Enterprise Leadership has established a context for sustainable growth. It’s the right concept at the right time.”**

Thomas d’Aquino—Chief Executive and President of the Canadian Council of Chief Executives

**What does business growth mean to you?**

Encouraging Canadian businesses to grow globally is critical to our future. The foundation of this growth will be our ability to attract and keep talented people; encourage the generation of innovative ideas; and create an appealing environment for investment in new technologies and new ventures. In turn, we need business and government leaders who can see the big picture; anticipate and adapt to rapid changes—whether across organizations, industries, or regions—and, most importantly, leaders who can work collaboratively to bridge cultural divides. This is the essence of Cross-Enterprise Leadership.



## “Growth comes from leadership built in partnership with a great team.”

George Cope—HBA '84, President and Chief Executive Officer of BCE Inc. and Bell Canada

### What does career growth mean to you?

A career in leadership is built on a great team. As a leader, you set the goals, but you cannot achieve them by yourself, and you shouldn't try. To achieve your goals, you need to seek out partners with skills and perspectives you may not have—those who really challenge you in a collaborative way every day. This is a lesson I learned at Ivey and one that has been sustained through my ongoing investment in the Ivey Alumni Network.

Your alumni network can fit quite well into the balance we must all maintain between family, work life, and all of our interests and passions. For me, the network is a great way to give back to the organization and people who've contributed so much to my career, while continuing my own learning year after year. I share the lessons I've learned, while benefitting from the collected experience of my diverse Ivey peer group and from the fresh and energetic young business minds of the Ivey classroom.



**“Growth means extraordinary learning experiences that transform who you are and reveal leadership potential you never knew you had.”**

Adwoa Mould-Mograbi—MBA '09 Candidate

### **What does personal growth mean to you?**

Personal growth is using every experience, whether success or failure, as an opportunity to learn and grow. Each day brings new challenges and a chance to redefine who I am and who I want to be. It is a conscious effort to seek new insight and apply lessons learned. Ivey has pushed me out of my comfort zone and equipped me to understand and handle business, financial and economic issues in a fast paced and dynamic environment. Above all, I have developed a deep sense of self-confidence and belief in my own ability to build, manage and lead a successful and thriving business enterprise.



**“From the personal growth of individuals, their careers and their businesses, to the growth of knowledge, as Canada’s leadership school, we define success by our ability to impact growth in all these areas.”**

Carol Stephenson—Dean

## Ivey is Growth

**In a year in which the world experienced unprecedented financial loss and economic turmoil, our focus on growth may seem to be at odds with reality. Far from it.**

Growth is essential for the future. A sustainable growth strategy values and builds upon the interconnected nature of an organization's stakeholders: the customer, the shareholder and the community. For Ivey, growth also means thoughtful choices, focus and innovation.

Three years ago, Ivey was the first business school in the world to recognize and act on the need to fundamentally restructure our traditional approach to teaching and research to address the dramatic changes created by the rapid advance of globalization and technology. Through Cross-Enterprise Leadership, we have set a firm foundation for our future and, more importantly, for the growth of business leadership in Canada and around the world.

**Our investment in Cross-Enterprise Leadership strategy is focused on five strategic imperatives:**

- Create intensive and cutting-edge MBA and EMBA Programs
- Build the world's best undergraduate program and grow its size
- Focus research to crack a handful of Cross-Enterprise Leadership issues
- Focus corporate education on Cross-Enterprise Leadership skills
- Launch a fundraising campaign to match the scope of our vision

**As you will learn throughout the 2008 Annual Report, our strategy is to deliver solid returns. Despite challenging economic times, 2008 was a strong year for Ivey:**

- The HBA program is meeting its growth target by reaching out to a much broader market of outstanding young leaders across Canada and internationally. We are adding our sixth section of HBA students in September 2009.

- The one-year MBA program has established a solid foundation for growth with an innovative curriculum, and our Executive MBA program is leading market share in Toronto. Its innovative programming is receiving top marks from both students and corporate sponsors.
- Our research output continues to grow with the support of a thriving PhD program that is attracting award-winning candidates worldwide.
- Ivey Executive Development is developing new markets and innovative programs to meet the growing need for leadership talent, with programs such as ReConnect for professional women re-entering the workforce.
- The involvement and support of our Alumni continues to grow each year with a record contribution to our Ivey annual fund in the past year.

Our investment in faculty is the source of all our growth. Ivey professors drive growth in business and academic communities alike. Case writing, along with long-term education partnerships with firms such as Maple Leaf Foods, TD Bank and JD Irving, ensure that Ivey's professors stay connected to real world issues. The results are impressive: in the past year alone, 10 of Ivey's professors were recognized with prestigious teaching awards from The University of Western Ontario and the province of Ontario.

It is imperative to invest in the future and for this reason in 2008, after an intense international recruitment campaign, we were successful in attracting 10 outstanding new faculty members to Ivey, who strengthened our ability to achieve all our goals.

As I begin my second term as Dean of the Richard Ivey School of Business, my promise to you is a continued focus on sustainable growth for all our stakeholders. I am deeply indebted to all Ivey alumni and friends of the school who have supported us in a multitude of ways over the past year. You are the inspiration for all we do.





## At the Heart of Growth



**At the heart of our teaching and research is a culture that thrives on collaboration—where faculty can easily stretch outside narrow viewpoints by accessing each other’s knowledge at every level. This is Cross-Enterprise Leadership in action.**

Thought leadership stems from a culture of collaboration, which has been one of Ivey’s most distinctive strengths since its inception in 1922. This focus on collaboration was further deepened with the introduction of Cross-Enterprise Leadership in 2005. Learning and growth of individual faculty members is enhanced through collaboration and results in a win for professors, students and businesses alike. This collaboration and emphasis on teamwork is also engrained in the development of curriculum, assessment of students, and even in the organization of support operations at Ivey, such as career management and student recruitment.

Case writing, along with long-term educational partnerships with firms such as Maple Leaf Foods, TD Bank and JD Irving, ensure that Ivey’s professors stay connected to real world issues. More importantly, they can take relevant and current business experience into the classroom. As a result, in the past year alone, 10 of Ivey’s faculty members were recognized with prestigious teaching awards.

Ivey faculty are the foundation of continued growth. They are among the top in their field, accumulating several million in government research grants in 2008. It is also important to invest in the future. In 2008, following an intense recruitment campaign, the School was successful in attracting 10 new full-time faculty members to Ivey, all of whom have well established reputations in their areas and were attracted by Ivey’s collaborative approach to both teaching and research.



## A Case-Study

**Cross-Enterprise Leadership has its origins in the collaborative nexus of Ivey's academic culture. On any given day, professors and researchers cross silo boundaries and engage in an exchange of ideas with their counterparts.**

Although it was a warm morning in September 2007, it was off to a cold start for Professor Mark Vandebosch, a marketing expert and former director of Ivey's HBA Program. He frowned as he finished reading the email from the pension board stating that some of his funds had been invested in products related to US subprime mortgages. "Great!" he thought. "That's twice in the last few months that has happened to me."

He was referring to his investment in a reputable food manufacturing firm that had lost most of its value thanks to a crisis in their global supply chain that led to a massive recall. He tried to reassure himself by thinking that there were many others like him. It didn't help much. Why was everyone—including the managers involved—"surprised" by these failures? Didn't anyone see this coming?

Then another question hit him: "Was it possible the two crises were caused by the same underlying issues? Could vastly different industries be afflicted with similar weaknesses?" He was curious—but also going to be late for class—so he tapped out a brief email to his colleague,

Professor Stephen Sapp, an international finance expert at Ivey who had been investigating the globalization of financial markets for many years. They met that afternoon and many times after that, filling whiteboards, spreadsheets and lunch hours with discussion and analysis. Several months later they had their answer.

Bringing their respective viewpoints to the analysis, Vandebosch and Sapp uncovered one of those simple truths that lie hidden in plain view until the right questions are asked. The two researchers assert their findings indicate that regardless of industry, the drive for efficiency in ultracompetitive markets leads to weakness in business models that often go undetected. It was a great "Aha" moment, they agree. They plan to publish their findings in 2009 and hope that many businesses (and investors) will benefit from learning what and where to look to avoid similar mistakes and proceed with greater confidence into global markets for long term growth.

Like an Ivey grad adept at analyzing complex issues, the mark of a good researcher is the ability to figure out what's missing by asking the right questions. Recently, Professor Mary Crossan, Director of Ivey's Leading Cross-Enterprise research centre, overheard a conversation between Mark and Stephen at the school's Tuesday coffee hour and recognized a missing link for a research paper on crisis leadership that she and another Ivey colleague were developing. She invited Mark and Stephen to join their effort. And so learning and collaboration grows.

## HBA Program

### Growing On Quality

**For the third consecutive year, a record number of secondary school students applied to Western seeking pre-admission to the HBA Program—Ivey Advance Entry Opportunity (AEO) status.**

A grassroots marketing campaign in secondary schools was the fuel that led to this growth in applications across Canada and internationally. To put it in perspective, says Professor Darren Meister, HBA Program Director, “In 2004, Ivey visited just 20 high schools in Ontario; in 2008, we visited more than 10 times that number—210 schools with 30 percent of the visits taking place outside of Ontario. It’s paying off.”

Canada’s first and only HBA for business has grown and evolved over 86 years, earning a world-wide reputation for excellence due in large part to the calibre of its people. Whether in its students or faculty, Ivey’s investment in both intellectual ability and leadership potential ensures quality growth now and for the future.

Demand is high, but growth isn’t just about volume. Qualification for entry into the program is more stringent than ever to ensure every individual can contribute to the HBA experience of his or her peers. The result of this rigorous selection process and spirited recruitment campaign is a class defined by a greater diversity of strong academic achievers who also demonstrate leadership in a variety of extra-curricular and entrepreneurial areas. Today, the HBA class is composed of five sections and a total of 389 students of which 10% are international and 28% from outside Ontario (compared to 2007 when only 16% were from outside Ontario). Diversity is critical both to the learning experience and the long-term vitality of the alumni network.

The pool of outstanding students is wide and deep and, despite the global economic crisis, Ivey HBA growth is on target for 2009 with a goal of admitting six sections (460 students). Future growth will be monitored to ensure an optimal level of career opportunities for all graduates; however, the School fully expects to reach our original goal of eight sections by 2011. At this size, the HBA Program is best positioned to support the sustainable development of innovative electives and take full advantage of the School’s significant increase in mid-career faculty drawn from a global and highly competitive market.

But some things are best left unchanged. Professor Meister explains: “If an alumnus from the HBA Class of ’68 visited an Ivey classroom today, he or she would immediately feel at home. The core student experience, central to Ivey’s success, is exactly the same. Teaching is organized in a section-based experience and all core classes are taken in a section with a common set of faculty. That’s not changed, nor is it going to.”

### A Global Perspective

**HBA program deepens global perspective with new international opportunities.**

The Ivey HBA Program continues to grow in status for a number of reasons and international diversity is a critical one. In 2008 students applied from 23 different universities with 38 different majors. Every student has the opportunity to participate in study trips—to Israel, India and China for example, as well as opportunities for teaching internships through the HBA Leader Program in Central and Eastern Europe. Exciting exchange opportunities continue to be available for students through our exchange relationships with 42 universities around the world.

The Ivey HBA recently received the honour of being selected as the only Canadian business degree recognized for direct entry into the Master of International Management program offered by the Community of European Management Schools (CEMS). CEMS is an alliance of 27 top business schools and 60 multinational companies with a mission to set a global standard of excellence for pre-experience Masters in Management. Students graduate with both an MSc from one of the allied business schools, and receive the MIM designation from CEMS.

Partnering with CEMS creates new and interesting opportunities for HBA students by leveraging established global academic and corporate partners. “We are proud to be the exclusive Canadian partner in the delivery of this world-class program,” says Professor Darren Meister, Faculty Director of the HBA Program. “We look forward to realizing the potential of this relationship for Ivey grads as many other top schools such as HEC Paris, Bocconi and the London School of Economics already have.”

## Accounting Accreditations

### HBA program earns two accounting accreditations.

The Ivey HBA Program is now accredited by two prominent professional accounting bodies: The Institute of Chartered Accountants of Ontario (ICAO) and The Society of Management Accountants of Canada. The accreditation is an important accomplishment for the HBA Program as it is essentially the stamp of approval from the ICAO and The Society of Management Accountants of Canada. With the accreditation, both organizations recognize that Ivey offers all of the courses required to pursue a CA or CMA designation in an approved and high-quality format.

## HBA Program at a Glance

### 2008 HBA Class Profile

Class Profile	
Male	62%
Female	38%
AEO	50% / 187 students
non-AEO from Western	36% / 136 students
Other Universities	14% / 53 students
Attended Grade 12 in Ontario	71.5% / 268 students
Attended Grade 12 outside of Ontario in Canada	18.1% / 68 students
Attended Grade 12 outside of Canada	10.4% / 39 students
International Citizenship	10%

### 2008 Employment

Job Status	% of Job Seekers
Received Offer(s)	92%
Still Seeking Employment	8

Reporting Information	% of HBA Class
Actively Seeking Employment	86%
Not Seeking Employment	4%
Reporting Rate	90%

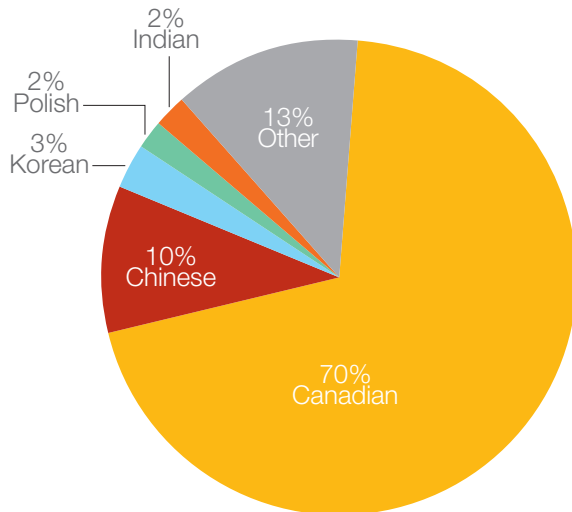
### Compensation by Industry

Average Total Compensation was \$60,040\*

\*Includes: Base salary, signing bonus and other guaranteed compensation, as reported by our graduates.

Industry - Base Salary	% of Students	High	Mean
Consulting-Management	18%	\$75,000	\$61,164
Consulting-Other	4%	\$65,000	\$56,429
Consumre Packaged Goods	7%	\$62,000	\$54,409
Energy/Resources	2%	\$69,540	\$59,808
Finance-Accounting	21%	\$48,000	\$43,875
Finance-Corporate Office	3%	\$57,000	\$48,965
Finance-Corporate Banking	24%	\$92,500	\$63,501
Finance-Investment Management	2%	\$75,000	\$58,500
Finance-Other	5%	\$75,000	\$54,886
IT/Telecommunications	3%	\$65,000	\$58,286
Manufacturing	2%	\$52,000	\$48,900
Wholesale/Retail	2%		
Other	8%	\$61,200	\$42,093

### Demographics: Birth Country



## MBA Program

### Leading Through Innovation

#### Canada's first MBA program celebrates 60 years of growth, innovation and leadership.

Ivey led the way in 1948 when it established Canada's first MBA program. Sixty years later the Ivey MBA continues to be the program to lead the advancement of business education. While many top schools are just beginning to think about change in light of the global economic crisis, Ivey's one-year MBA is in its third year delivering graduates who are prepared to lead in a world in which globalization is changing all the rules.

Growth in the MBA program is all about quality—quality of the students, quality of the experience, and quality of the alumni. "It's a virtuous circle," says Eric Morse, Associate Dean of Programs.

One of the most unique aspects of Ivey's recruitment strategy is the partnership with Career Management, which has earned a reputation among recruiters as the very best in Canada for its professional staff with deep industry knowledge and exceptional service standards. Over the past two years, Career Management has also partnered with the MBA recruiting team throughout the application process. "They know what recruiters are looking for so it just made sense to involve them deeply in pre-screening candidate resumes, developing a comprehensive candidate scorecard, and providing feedback on interviews," explains Morse.

The first two years of the new MBA program have been highly successful from multiple perspectives. As always, Ivey faculty consistently exceeded student expectations and MBA students have expressed high satisfaction with the Cross-Enterprise Leadership curriculum and approach, including team teaching, a greater emphasis on teamwork, and international learning opportunities.

Despite these positive indicators, in a highly competitive and growing global market, we believe it is essential to review our strategy at regular intervals. During the fall, an MBA Task Force, led by Ivey Advisory Board member and former P&G and American Express senior executive, Barbara Fraser, HBA '71, was formed to spearhead a full

review, while our Career Management team conducted in-depth recruiter interviews and a student experience survey was created in partnership with the MBA Student Association.

One area under review was the dual cohort system (classes starting in both May and September). While the dual cohort structure has many benefits, over time we found that the additional demands this system placed on our recruiters as well as on faculty and staff resources, outweighed the benefits. A larger class entering once a year best positions the MBA program for future growth. The Task Force approved a recommendation to move to a single cohort of two 70 person classes in 2010.

### Career Management

#### Career Management helps differentiate Ivey students.

Career Management continues to be recognized as a differentiator for companies looking to access the calibre of talent that Ivey attracts at both the HBA and MBA level. Results from the annual recruiter survey consistently places Ivey's Career Management team as the best in Canada, providing a benchmark of service, partnership and consultation that other schools could learn from.

Placement results for the year remain strong. And in looking at the year ahead, with the expected cutbacks this economy presents, a defined corporate development plan is under way to draw even more opportunities to Ivey students through formalized channels.

Programming to ensure our students perform well, once given access to opportunities, is more robust than ever with mandatory classes for first year HBAs and a mandatory "Get Connected" program for our MBAs (one week in Toronto meeting alumni and recruiters, setting up their own informational meetings and doing mock interviews). Understanding the challenges our students face in this market reveal there is more emphasis than ever on the concepts of goal setting, staying current with the business press, networking, and "Olympic-level" preparation for interviews to ensure that once access to an interview is granted, Ivey students know what it means to perform.

## MBA Meet their Match

### MBA students travel to Nebraska to meet Warren Buffett.

Ivey is one of a small handful of universities in the world offering a formal program in Value Investing, the investment strategy championed by Warren Buffett. Prof. George Athanassakos, who chairs Ivey's Ben Graham Centre for Value Investing, took his MBA class on the field trip of a lifetime in the spring. Ivey MBA students were invited by the Oracle of Omaha to spend the day with him in Nebraska to discuss stock trading and enjoy lunch at Buffett's favourite steakhouse. For Athanassakos: "Buffett is a wise man, not just in investing but in all aspects of life. Spending a day with him was a once-in-a-lifetime opportunity."

## MBA Program at a Glance

### 2008 MBA Spring Class Profile

71 students	9 faculties in previous education	25 different languages spoken
11 countries	15 industries in work experience	39% have more than one degree
6 provinces	36% have international work experience	

Class Profile		Citizenship		Birth Country
Total Class	71	Canadian	75%	54%
Male	75%	Chinese	4%	7%
Female	25%	Indian	11%	18%
Years Work Experience	4.6	Latin American	1%	3%
Average Age	29	Other	9%	18%
Average GMAT	658			

### 2008 MBA Fall Class Profile

73 students	9 faculties in previous education	31 different languages spoken
8 countries	29 industries in work experience	38% have more than one degree
5 provinces	29% have international work experience	

Class Profile		Citizenship		Birth Country
Total Class	73	Canadian	73%	55%
Male	75%	Chinese	11%	12%
Female	25%	Indian	8%	12%
Years Work Experience	5.4	Latin American	3%	7%
Average Age	30	Other	5%	15%
Average GMAT	657			

### 2008 Employment

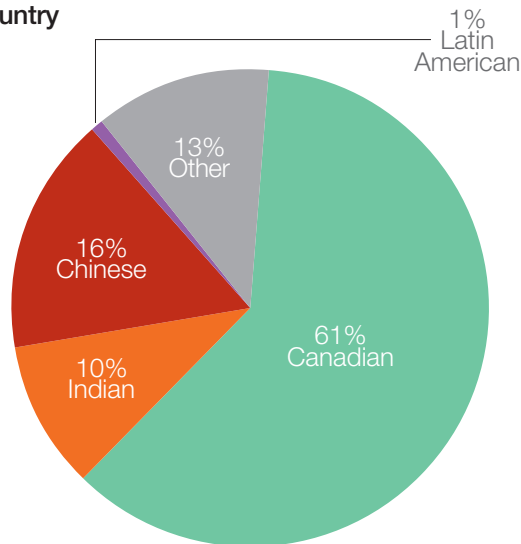
Job Status	% of Job Seekers
Received Offer(s)	91%
Reporting Information	% of MBA Class
Actively Seeking Employment	88%
Not Seeking Employment	6%
Reporting Rate	94%

### Compensation by Industry

Average Total Compensation was \$103,781\*. Up from \$93,949 in 2007.  
 \*Includes: Base salary, signing bonus and other guaranteed compensation, as reported by our graduates.

Industry - Base Salary	% of Students	High	Mean
Consulting-Management	20%	\$135,000	\$104,800
Consulting-Other	7%	\$115,000	\$81,625
Consumer Packaged Goods	7%	\$72,000	\$67,750
Finance-Corporate Banking	11%	\$134,000	\$92,400
Finance-Corporate Office	12%	\$94,000	\$83,750
Finance-Investment Management	3%		
Finance-Insurance	4%	\$96,000	\$87,000
Healthcare/Pharmaceuticals	7%	\$120,000	\$86,167
IT/Telecommunications	10%	\$115,000	\$91,118
Manufacturing	4%	\$78,000	\$73,667
Wholesale/Retail	3%	\$130,000	\$92,750
Other	12%	\$120,000	\$88,450

### Demographics: Birth Country





## EMBA Program

### Celebrating a Decade in Hong Kong

**On the eve of the U.S. election, former U.S. Secretary of State, General Colin Powell, helped the School commemorate the 10th anniversary of its Hong Kong EMBA program.**

General Powell was the keynote speaker at a gala dinner celebrating Ivey's leadership as the first North American business school to establish a campus in China. Powell spoke to the need for strong leadership in uncertain financial times, and highlighted the benefits of his own MBA in preparing him for leadership in international relations.

Powell noted, "The kind of work that you are doing here at the Ivey School is very valuable; educating and training mid-career managers, as it will prepare them for where their future will take them. My MBA experience certainly did that for me." Commenting on the President-Elect, Powell said he's confident Barack Obama understands the issues the U.S. is facing today and that America cannot be "isolated from the rest of the world, as we are all connected."

The interconnected nature of globalization is the linchpin of Ivey's Cross-Enterprise Leadership teaching and research focus and the School's dedication to the case method. Associate Dean of Ivey's Asian campus, Kathleen Slaughter, emphasized that just as General Powell used diplomacy to resolve international crises, today's business leaders must use persuasion, influence and teamwork. The case method is ideally suited to developing those skills in the next generation of Asia's business leaders.

During the evening Dr. Cheng Yu-Tung, Chairman of New World Development Company Limited, was presented with the Ivey Business Leader Award—the first of its kind in Asia. Dr. Cheng and the Cheng family have contributed significantly to the success of the Ivey program in Asia. Henry Cheng, HBA '71, MBA '72, guided the School in establishing the Hong Kong campus which was named after his father to honour his commitment to education.

### First Custom EMBA in North America

**One of only three corporate EMBA programs in the world today, JD Irving Limited completed the Ivey EMBA program graduating 30 managers in May along with graduates of the regular EMBA and MBA programs.**

This marks the first time a corporate class has graduated with an Ivey MBA. Tim Hodgson, MBA '88, President, Goldman Sachs Canada, delivered the keynote speech at the ceremony. He spoke to the importance of building wealth—the kind of riches that come from listening to the wise, developing one's potential, and influencing global development.

### Toronto EMBA Leads Market Share

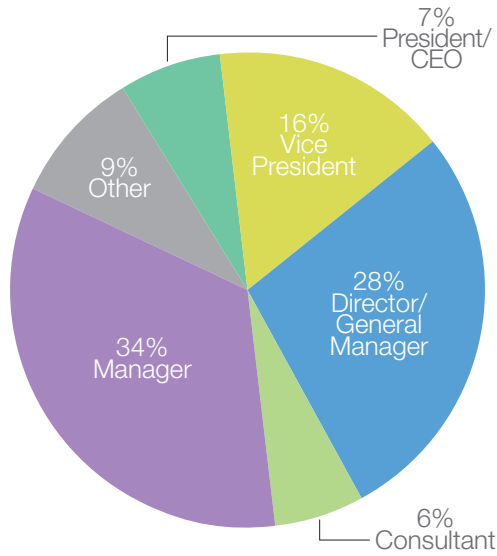
**Since moving its campus from the outskirts of Toronto to the downtown core of the financial district in February 2007, the EMBA program has earned 45 percent market share in Toronto.**

Both its winter and fall classes were oversubscribed by 50 percent. Credit for this success is attributed to a combination of the new curriculum introduced by EMBA Program Director, Professor Michael Pearce in 2007, the ING Leadership Centre location, and a strong marketing program. A greater emphasis has also been placed on integrating business leaders into the core curriculum. During the past year, leaders of industry and government, such as Canada's Finance Minister, the Honourable Jim Flaherty, and BCE President and CEO, George Cope, HBA '84, have led classroom sessions, sharing their experience and insights.

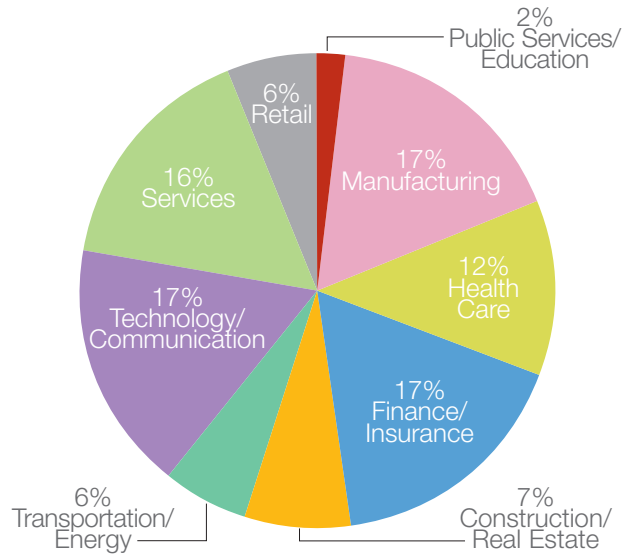
**EMBA Class Profile**

Class Profile	
Total number of participants (3 classes)	161
Average age	38.3
Average work experience (years)	14.4
Average management experience (years)	9.3
Percentage female	22%
Percentage with 2 or more degrees	14%
Percentage with 3 or more degrees	1%
% with professional designation	20%

**EMBA Participant Position**



**EMBA Participant Industry**



## PhD Program

### Staying the Course

#### PhD students contribute significantly to the School's research output.

Measuring the success of a PhD program begins with the quality of the scholars accepted. This year, Ivey accepted 11 new students. Between them they average GMAT scores at the 86<sup>th</sup> percentile with an average GPA of A-. In addition, two of the incoming students won awards from the Ontario Graduate Scholarships program.

This new class brings the total number of PhD candidates to 80. Each student reflects the high standard that keeps Ivey at the forefront of business schools around the world. "In the late 1990s we were admitting three to four PhD students per year and now we are admitting 10 to 12 per year," says Professor Deborah Compeau, Director of the PhD program. "We adjust intake year by year to try to find the 'optimal' size, but all in all, the program is healthy and significantly expanded."

More important than numbers is the impressive contribution to research these scholars make. During the past two years, 51 articles were authored or co-authored by PhD students. That's roughly a quarter of Ivey's research productivity. "This is an important figure," says Professor Compeau. "Contributing to the research mission of the School is one of the strategic objectives of the PhD program." The students have also attracted external funding to the program and six donor funded scholarships, further reflecting the quality of their performance.

### Another Ivey First

#### Daina Mazutis becomes the first business student to receive Trudeau Scholarship.

It was a proud moment for the School when the news came that PhD student, Daina Mazutis, had received the distinguished Trudeau Scholarship Award. Daina is the first business student to receive the \$150,000 award. The Trudeau Scholarship is granted annually to support doctoral candidates in the sciences and humanities, pursuing research in areas that address current pressing concerns. Assessment of nominees for the Trudeau scholarship focuses on academic achievement, outstanding communication and engagement skills, and the demonstrated

intent to pursue the research and contribute to public debate and knowledge in the student's chosen area.

Daina's work highlights the tension business leaders experience between balancing corporate profit goals with the needs of the communities, cultures, civic and spiritual organizations in which the firm operates. Her goal is to promote responsible citizenship and a dialogue between business and social sciences scholars so that together they can address the false separation of the private, public and third sectors. She says of her honour: "I feel immensely privileged to be among such an accomplished group of scholars and fellows." For Daina, Ivey is the ideal setting in which to pursue her research. "With its supportive learning environment and wonderful PhD student community, I feel very lucky to be pursuing my degree at Ivey."

### Ethical Consumerism Hits Home Run

#### PhD candidate, Remi Trudel makes headlines with his ethical consumerism research.

The old adage, "publish or perish," is a given in academic institutions and is just as important for Ivey's PhD students as it is for their faculty advisors. Great business research demonstrates not only intellectual strength, but also innovation, intuition and relevance. It reflects the calibre of the students, the calibre and support of the professors, and the reputation of the entire business school for world-class leadership and training.

Imagine then, how excited PhD candidate Remi Trudel and Professor June Cotte were to discover that their work on ethical consumerism had been accepted for publication in both the Wall Street Journal Business Insights and its sister publication, MIT/Sloan Management Review—a dual honour that is rare.

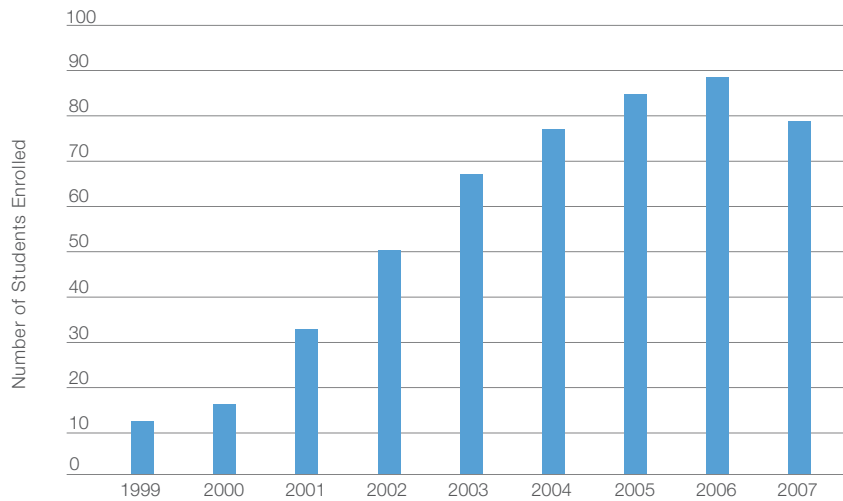
Is It Really Worth It? Consumer Response to Ethical and Unethical Practices addresses the impact of investing in social responsibility on the corporate bottom line. Trudel says, "If we can show that there is a business case, and not just a social case for behaving responsibly, then it becomes a more legitimate strategic option in which everyone wins—the firm, its shareholders, and society in general."

The article's simultaneous acceptance into both publications marks another significant Ivey first. The Wall Street Journal Business Insight section is a highly selective collection of

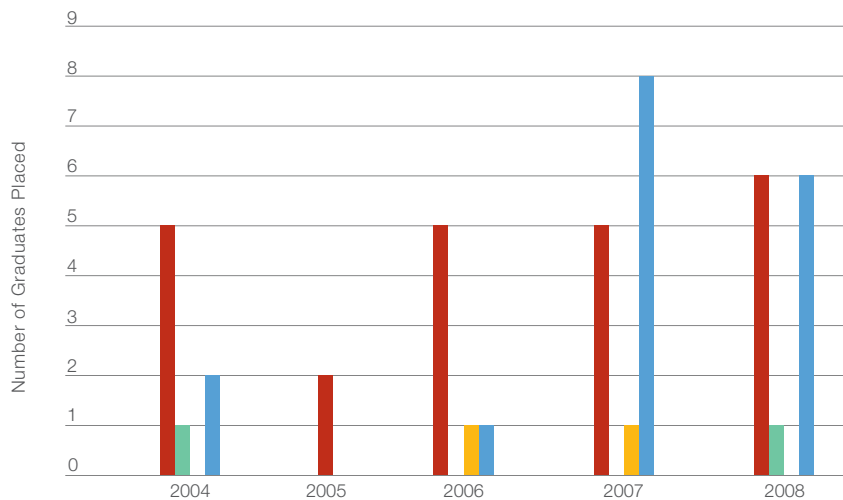
## Ivey Degree Programs | PhD Program

scholarly management articles which the Sloan Management Review co-produces with WSJ editors every other month. It reaches more than 2 million readers. Typically authors are published in one or the other—the editors don't usually allow the same research to be published twice; in fact, they have an agreement not to do so. Breaking with this tradition reflects the value of the research and garnered maximum exposure for this outstanding research team.

**Enrollment 1999 to 2007** ■ Enrollment



**Graduate Placements 2001-2008** ■ Canada ■ Europe ■ Asia-Pacific ■ USA



# Executive Development

## Growth of Custom Programs

**Well into its second year in Toronto's financial district, the ING Leadership Centre has seen a dramatic increase in activities and exposure.**

Andrew Wright, Director, Executive Development Custom Programs, says, "It's a great facility. With the Toronto location, we have more flexibility in terms of non-residential program delivery for two and three-day custom programs. In terms of impact on a national level, we're where we need to be."

In the past five years, Ivey's Executive Development business has seen a major shift in focus from open enrollment to custom programs. Organizations are realizing the benefits of custom programs particularly during difficult budget years when investment in soft skills, such as communications and teamwork, as well as leadership development, may be the first budget lines to be sacrificed. Programs tailored to provide industry and organizational needs provide fast and measureable benefits. "You can educate and train a mass of executive employees to really affect productive transformation across the company," says Wright.

In organizational demographics there is a need to develop people identified as high potential individuals for future leadership—looking to the next group of leaders and investing in those people. Being nimble enough to offer a full scale of services to meet the developing and changing needs of organizations allows Ivey's Executive Development to foster real growth, for the school and for its business partners.

## First Career Renewal Program for Women

**The ability to see and respond to the needs of the business community has put Ivey first for more than 85 years. A perfect example is the new ReConnect Program—Canada's first career renewal program for professional women returning to work.**

After taking time out of the workforce to pursue other activities, the 18 women, who graduated from the inaugural program on November 25, are set to restart their careers and successfully re-enter the workforce. The seven-day immersion program was made possible by CIBC's generous \$1 million commitment over five years. As co-founder of ReConnect, CIBC's donation helped fund program development and provide financial assistance to women in financial need.

The women came from as far as Italy, Nova Scotia and British Columbia, with the majority from central Canada, and had a range of experience and backgrounds, including retail, financial services, the auto sector, technology, public administration, and law, as well as some entrepreneurs. Half of the participants had post-graduate degrees, an average of 17 years of work experience, and had been out of the workforce for an average of five years.

From October 27 to 31, they spent five intensive days at the campus in London renewing critical business knowledge, leadership and technical skills, as well as building their peer network and personal brand. A two-day extension at the Toronto campus a month later focused on developing an action plan to return to work, followed by a graduation ceremony at CIBC.

This program reinforces Ivey's commitment to women in business. Just as important as helping to re-integrate these talented women, Ivey is also supporting Canada's long-term economic growth by reaching out to a successful yet overlooked group. Talent such as theirs will become increasingly critical as Canadian companies struggle with a growing talent gap.

Ivey currently has plans to run the ReConnect program for five years. The next class will begin October 26, 2009.

## Cross-Enterprise Research Centres

### Creating Cross-Enterprise Leaders

#### Faculty come together to tackle a new Cross-Enterprise research initiative.

We will look back on 2008 as the year globalization hit home... literally. Like a speeding train, the interconnectedness of the nations' economies was fully realized as the lead engine jumped the tracks and tipped over. As a result of the global financial crisis, many top business schools began to look inward and question their role in both the problem and the solution. At Ivey, this pursuit had taken hold three years earlier and Cross-Enterprise Leadership research was well underway.

While not anticipating a crisis of this nature, in 2005 Ivey underwent a comprehensive strategic review that resulted in its current Cross-Enterprise Leadership strategy. The School led by example, engaging in a new approach to research under four key Centres that would address the most pressing issues and opportunities facing business today: Leadership, Emerging Markets, Sustainable Growth, and Entrepreneurship.

This summer, Professor Mary Crossan, Director of the Leading Cross-Enterprise research centre, called on two dozen of her colleagues from a broad range of academic disciplines to join her in a brainstorming session. She wanted to kick-start a new research initiative seeking to unravel what is going on at the heart of corporate crises, and what it means for the young leaders in Ivey's classrooms today.

This past year has seen the serious collapse of major lending corporations and other financial institutions giving rise to questions of corporate ethics and responsibility. Crossan's research, however, points to something bigger. During the brainstorming session, Crossan and her colleagues began to work with the analogy of an iceberg. As Crossan explains, in situations like the high profile collapse of firms such as Lehman Brothers, the ethical questions are simply the tip. The bulk of the iceberg is hidden from view and requires a much more sophisticated explanation involving the unspoken and "messy social stuff" operating across the enterprise.

Another major factor in organizational collapse is the notion of practical drift. People assume a lot of information about each other, each doing their own job, presumably in

accordance with the rules of the business. However, in an organization that Professor Crossan refers to as "loosely coupled," no one actually notices what the other person does, leaving a lot of room for misinformation and miscommunication. Over time, small mistakes or omissions can lead to major catastrophe.

A good Cross-Enterprise Leader will look to the fundamental values of the business as the shared "ties that bind" loosely coupled units together. To understand what may be going on beneath the tip of the iceberg, he or she will also look to the seams—those places between units, where questions of identity and allegiance are ultimately addressed. Crossan uses the example of the seam between marketing and R&D being perhaps functional, geographic, or even the seam between a supplier and the company itself. Who people identify themselves with or align to are the people they "drift" with.

Fostering a sense of identity between people across the enterprise requires insight as well as cross-enterprise experience and knowledge. It assumes a willingness in executive leadership to explore beneath the apparent surface of things to areas often overlooked in traditional business education. Helping Ivey students, organizations and leaders develop an undercover intelligence along critical leadership essentials is the goal of Professor Crossan and her colleagues in the Leading Cross-Enterprise Research Centre.

### Building Sustainable Value

#### Two professors demonstrate their commitment to sustainable business values.

Meet two of Ivey's exceptional faculty members. Their interests merge and diverge but what they have in common is a fierce commitment to sustainable business values for the betterment of individuals, neighbourhoods, communities, countries and, ultimately, continents.

#### Tima Bansal

For Tima Bansal, Director of the Building Sustainable Value research centre and, Executive Director, Research Network for Business Sustainability, sustainability is more than just business, it is "the core of human nature." At a high profile New York City reception, Professor Bansal was recognized

for her dedicated and innovative commitment to the support for, and promotion of, business sustainability and was awarded the “Oscar of the business world,” the 2008 Faculty Pioneer Award for Academic Leadership, by the Aspen Institute Center for Business Education.

Professor Bansal’s leadership at Ivey has been inspirational. She pioneered the integration of business sustainability into business education at Ivey, making Ivey the first business school in Canada to introduce sustainability into the core MBA and HBA curriculum. As Director of the Building Sustainable Value research centre and The Research Network for Business Sustainability, Bansal has raised over \$5 million from five different granting programs. This money will drive forward the research behind sustainable business, making it accessible to business leaders and their organizations through networking, building business student capacity, and mobilizing information via new conferences, two Knowledge Forums, virtual dialogue, and face-to-face relationships.

“Corporations, now more than ever, must accommodate the needs of society in pursuit of private wealth. Only by doing so, can an organization be viable in the long-term and see private and public interests start to align,” says Professor Bansal. For example, investments in leading edge, environmentally responsible technologies often have long-term payoffs through lower energy or waste management costs, and by appeasing the concerns of the community and activists.

Several new faculty members with an interest in social and environmental issues have also recently joined Ivey. Under Professor Bansal’s leadership, Ivey is putting Canada in the foreground of worldwide research that promotes and, most importantly, supports responsible, ethical business behaviour.

### Oana Branzei

Professor Oana Branzei’s commitment to socially sustainable business takes Ivey into some of the world’s poorest, most challenged communities—those in extreme situations of crisis, scarcity and conflict. Branzei’s research investigates how business models and entrepreneurial activities empower people to contribute to re-weaving the social and cultural fabric in highly unstable and dangerous environments such as Africa and Bangladesh.

Professor Branzei’s research in the Sudan and Darfur, in collaboration with Ivey PhD student Samer Abdelnour and

various partners in these African communities, investigates how opportunities for economic growth and more prosperous livelihoods emerge out of necessity and often thrive on traditional ways of life—like blacksmithing or cooperative agro-economic activity.

Despite 50 years of civil war in Sudan prompting massive displacement of local populations with well-established native social structures in place, Professor Branzei and Mr. Abdelnour show that the spirit of community in many areas of the Sudan remains strong and that turmoil and scarcity “not only hastens individual and collective action but also triggers cycles of collective learning.”

“Conducting research on the role of enterprise in extreme situations is extremely sensitive and dangerous work,” says Professor Branzei. “For some of our partners in these countries (Rwanda, Kenya, Uganda, and Tanzania, for example) it is a matter of life and death. But it is so powerful. Understanding the origins of these kinds of business models does a lot of social good because these models, out of necessity, challenge old norms, empower women and the disadvantaged, and are pro-social and pro-peace.”

Ivey’s Centre for Building Sustainable Value is a world leader in this unique area of business research and is highly sought after. For Dr. Branzei, it is clearly also a passion fuelled by the kind of integrity and commitment to a just and prosperous world that Ivey faculty and students bring to the School’s solid reputation.

## Engaging Emerging Markets Centre

**The Research Centre experiences significant growth and activity, and gains an expert on India.**

This year, the Engaging Emerging Markets Research Centre experienced growth in a number of ways. Membership in the Engaging Emerging Markets Centre expanded to 65 people, including Ivey faculty, doctoral candidates, and PhD graduates. New Ivey faculty members include Professors Charles Dhanaraj, Ariff Kachra, John Maxwell, and Xinghao Yan.

Centre members were heavily involved in a number of conferences and seminars. Professor Maxwell served as the Canadian delegate to the CEC (Committee on

Environmental Cooperation—a NAFTA agency) reviewing the outcome of a study on greening Mexico's supply chains, and presented research on "Uncertain Product Standards" to the US Federal Trade Commission in Washington DC. Professor Shih-Fen Chen represented Ivey at a press conference in Taipei announcing a partnership with the National Chengchi University in case development and distribution. In early December, Centre Director Paul Beamish presented an invited paper at the Global Forum for Responsible Management Education held at the United Nations headquarters in New York.

Professor Dhanaraj co-Chaired the Strategic Management Society (SMS) Conference at the Indian School of Business, Hyderabad, in December. Dhanaraj organized the conference for business school deans to discuss their role in management education in emerging markets and as a platform to integrate strategy scholars and executives in India with their global counterparts. The conference involved about 400 academics and business people from India, Europe, the U.S. and Canada, including 25 business school deans from outside of India.

Professor Dhanaraj also discussed business opportunities in India at the Ivey Idea Forum presentation at Ivey's ING Leadership Centre. Professor Dhanaraj, along with panellists Gary M. Comerford, MBA '75, Senior Vice President, International Sun Life Financial Inc., Canada, and Hari Panday, President, Wealth Management, North America Region and President and CEO, ICICI Wealth Management Inc., Canada, discussed conducting business in India at the sold-out event.

In September, Beamish presented at the Asia Pacific Foundation of Canada (APFC) board meeting in Ottawa, and again at the "Canadian Views on Asia" Roundtable, co-hosted by the Ontario Ministry of Economic Development and Trade.

## Driving Growth Through Entrepreneurship and Innovation Research Centre

### The Centre looks back on a successful year and welcomes a new Director.

The Driving Growth through Entrepreneurship & Innovation (DGEI) research centre welcomed new Director, Professor Simon C. Parker, in September, 2008.

The DGEI Centre is delighted to collaborate with and promote the work of Ivey faculty whose research intersects with the DGEI Centre's mandate to study areas of high growth and entrepreneurial learning.

Over the year, Ivey faculty contributed to the writing, publication and teaching of more than 30 cases affiliated with entrepreneurship, innovation, strategy and venturing; published several articles in Tier 1 journals, including Journal of Business Venturing and Strategic Management Journal; and were invited to attend and present at a number of conferences. Cases in Entrepreneurship: The Venture Creation Process (Simplified Chinese), by Ivey Professor Eric A. Morse and Ronald K. Mitchell, was published as one of a series of case books developed for business schools in China.

Professor Claus Rerup was awarded the inaugural DGEI Research Fellowship. Professor Rerup's work, which explores how new organizations unfold over time, has been published in Tier 1 research journals and was incorporated into a case that explores the issues of start-up and growth based on the research context. The DGEI Fellowship funded Professor Rerup's participation in Stanford University's 20th Anniversary SCANCOR Conference in November.

In 2008, Centre members were awarded Social Sciences & Humanities Research Council (SSHRC) grants totalling \$214,000 to further research projects examining sustainable growth in entrepreneurial firms and enterprise-led sustainable development under resource scarcity.

The DGEI research centre champions doctoral research in entrepreneurship, innovation and strategy by offering scholarships to doctoral students whose research intersects with the Centre's mandate. In 2008, three scholarships of \$25,000 each were awarded to Taiyun (Terry) Wang, Fei Zhu, and Rongdong Chen in support of research in the areas of corporate entrepreneurship and strategy.



## Research Centres & Institutes

### Lawrence National Centre for Policy and Management

#### **The Lawrence Centre completes one of its busiest years and appoints a new academic director.**

This year, the Lawrence National Centre for Policy and Management welcomed a new Academic Director, Professor John Maxwell, who has been researching and teaching business strategy as it relates to legislative and regulatory policymaking for more than 15 years. Prior to joining Ivey in 2008 he was Professor and Chair of the Department of Business Economics and Public Policy at the Kelley School of Business, Indiana University.

One of the highlights of the year for the Centre was the success of the Ontario-Québec Continental Gateway and Trade Corridor: Developing Competitive and Sustainable Transportation Policy Workshop, which was held in March. The workshop brought together more than one hundred representatives from business, government, non-governmental agencies, and students to assist the government in determining policy options and infrastructure needs.

With the success of the workshop, \$95,000 in research grants from Transport Canada, the Ministry of Transportation of Ontario, and the Ministère des Transports du Québec was received. Following the workshop, Dianne Cunningham, Director, Lawrence National Centre for Policy and Management, met with Kevin Lynch, Clerk of the Privy Council and Secretary to the Cabinet, on outcomes of the workshop and to discuss a potential Spring 2009 policy follow-up.

Another Centre highlight was David Dodge, the former Governor of the Bank of Canada, headlining the third annual Thomas d'Aquino Lecture on Leadership in November. He spoke both at the School and to a select group of executives in Toronto. Prior to starting his lecture, Dodge congratulated Ivey's Lawrence Centre for Policy and Management and the Canadian Council of Chief Executives for being "on the cutting edge of the nexus between public policy and business strategy."

### Asian Management Institute

#### **The institute experiences a boom in publishing and impact in Chinese market.**

Institute Director Paul Beamish's book titled Joint Venturing was published in August. It examines best practices around joint ventures and the factors and processes that lead to success. In December, Canadian Business magazine wrote an article on Joint Ventures that relied heavily on Professor Beamish's book. Beamish sets his book on a flight to China and uses numerous examples, which is fitting since between 25% and 40% of all foreign investment is in joint ventures.

Seven new Ivey faculty-edited case books were published for the China market and translated into Simplified Chinese. A Memorandum of Understanding was signed in July with the Indian Institute of Management (IIM) Ahmedabad to adopt the usage of Ivey cases in all of their teaching programs in India. The Institute and Centre also began three new partnerships with emerging market Business Schools to help them develop their case writing ability: National Chengchi University in Taiwan, Yonsei University in South Korea, and the University of Pretoria in South Africa.

## **Pierre L. Morrisette Institute for Entrepreneurship**

### **The Institute supported entrepreneurs, students and business families in 2008.**

The Pierre L. Morrisette Institute for Entrepreneurship concluded another successful year, expanding and enriching its programs and initiatives in response to increased demand from entrepreneurial students, an expanding entrepreneurial alumni base, and the amplification of interest in entrepreneurship and innovation as they relate to business families, social entrepreneurship and women in leadership.

On July 1st Professor Stewart Thornhill was appointed Executive Director, Pierre L. Morrisette Institute for Entrepreneurship. His extensive background in entrepreneurial teaching and research ensures a bright future for entrepreneurship at Ivey.

Professor Thornhill's appointment coincided with the expansion of entrepreneurship faculty to include a Director for the Driving Growth through Entrepreneurship & Innovation Research Centre and an Executive Entrepreneur-in-Residence. Together with the Director, Business Families Centre, and additional staff, the Institute is poised to research, develop and deliver an increasingly dynamic suite of programs and events for entrepreneurial students and alumni.

Notable milestones also include the fifth annual intake of students into the Certificate in Entrepreneurship Program, the 5th anniversary of the Quantum Shift Program and Fellows Conference, and the 10th Annual IBK Capital—Ivey Business Plan Competition.

The Pierre L. Morrisette Institute for Entrepreneurship continues to engage and support entrepreneurs from start-up to succession; from working with students to build a foundation from which they can successfully launch new businesses, to championing Canada's best entrepreneurs who are ready to take their businesses to the next level, and supporting business families as they transition to the next generation or next opportunity.

# A Year in Review

## January

### *Ivey Firsts*

Ivey launches Ivey First campaign, recognizing the many firsts of the school, including the first HBA program in Canada (1922); the first MBA program in Canada (1948); the first Management Training Course (Executive Development) held at Ivey (1948); first PhD in business in Canada (1961); the first business school in North America with a campus in China (1998); and the first Cross-Enterprise Leadership School (2005)

### *Dean Carol Stephenson is a "Woman to Watch"*

Dean Carol Stephenson named one of Canada's "Top 25 Women to Watch in 2008" by the Women's Post

### *Ivey-Ross Inter-Business School Conference*

HBA Students host the Annual Ivey-Ross (University of Michigan) Inter-Business School Conference "Taking Green Mainstream: the Environment's Effect on North American Business."

### *McKinsey Day role-playing workshop*

300 HBA students put strategy into action during the annual McKinsey Day role-playing workshop

## February

### *Forum for Engaging the Community*

Professor Tima Bansal and the Research Network for Business Sustainability brought together experts from around the world to discuss best practices at the Forum for Engaging the Community

## March

### *Scotiabank International Case Competition*

HBA Students host student teams from a dozen business schools around the world at the 19th Annual Scotiabank International Case Competition

### *IBK Capital-Ivey Business Plan Competition*

Up-and-coming student entrepreneurs from across Canada vie for funding at IBK Capital-Ivey Business Plan Competition

### *MBA Students meet Warren Buffett*

Ivey students spend the day with the "Oracle of Omaha" Warren Buffett

### *Transportation Policy Workshop*

The Lawrence National Centre for Policy and Management hosts The Ontario-Québec Continental Gateway and Trade Corridor: Developing Competitive and Sustainable Transportation Policy Workshop. The resulting report will play a vital role to government infrastructure plans for Ontario

## April

### *Ivey awarded Agriculture and Agri-Food Chair*

Government of Canada awards Ivey a \$2 million Chair for a five-year Agriculture and Agri-Food project that will evaluate the impact of government regulation on the agriculture sector. New Faculty member John Maxwell holds this position

### *DECA Financial Services Case Competition*

HBA student, Paul Jun, takes gold at the international DECA Financial Services Case Competition

### *Advisory Board Meeting*

The Ivey Advisory Board and Advisory Board Chair, Arkadi Kuhlmann, HBA '71, MBA '72, Chairman, President & CEO, ING Direct USA meet at the ING Leadership Centre for the semi-annual Advisory Board meeting

## May

### *Jim Flaherty meets with EMBA students*

The Honourable Jim Flaherty speaks to Ivey EMBA students and alumni about the global prospects for Canada

### *Rogue trader Nick Leeson offers advice to students*

Following a case discussion on Barings Bank, J.J. Wettlaufer speaker Nick Leeson, Barings' rogue trader, speaks to students and alumni about the importance of asking for help and advice to achieve career success

### *First Corporate EMBA class graduates*

MBA, EMBA and JD Irving Convocation with speaker Tim Hodgson, MBA '88, CEO, Goldman Sachs Canada. The JD Irving class was the first corporate EMBA class to graduate from Ivey

### *PhD Student wins Trudeau Scholarship*

PhD student Daina Mazutis is the first business student to receive \$150,000 Trudeau Scholarship for her research into how business and social needs can be better aligned

## A Year in Review

### *Ivey and CIBC establish ReConnect Program*

CIBC contributes \$1 million to become founding sponsor of executive development program, ReConnect, a career renewal program for women for women who have temporarily left the workforce

### *LEADER Project travels to Eastern Europe*

The LEADER Project sends 32 students to Russia, Ukraine, Moldova and Belarus to teach business principals and entrepreneurship

## June

### *Ivey and the City of London recognized*

City of London and the Richard Ivey School of Business Management Program wins Canadian Association of Municipal Administrators Award

## July

### *Accreditation awarded to HBA accounting stream*

Ivey's HBA accounting stream earns two industry accreditations: The Institute of Chartered Accountants of Ontario and The Society of Management Accountants of Canada

### *MBA students "Get Connected"*

Spring 2009 MBA class participates in Career Management's Get Connected Week in Toronto. Partnering with Ivey Alumni and valued corporate partners, the event provides students with a unique opportunity to learn from functionally-aligned panels and practice interviewing and networking skills, as they discover how the power of being connected can enhance career mobility and business opportunities

### *First Ivey Case Study Workshop*

Professor Shih-Fen Chen leads 10th annual Ivey-Tsinghua Case Method Workshop in Beijing, and establishes first Ivey Case Study Workshop at National Cheng Chi University in Taipei

### *Ivey welcomes 10 new faculty*

Twelve new faculty members bolster Ivey's roster with expertise ranging from ethics in marketing to corporate environmentalism and public policy

## August

### *Mercury MBA Cross-Enterprise Challenge*

MBA Students work with Conservatory Canada and Selectpath Financial to solve real time business challenges that they are experiencing and prepare business solutions for the Mercury MBA Cross-Enterprise Challenge

## September

### *Ivey Idea Forum launches*

Best selling author Michael Raynor, MBA '94, kick-starts the Ivey Idea Forum with a discussion about the Strategy Paradox with a group of business practitioners and alumni at the ING Leadership Centre, and later with a group of MBA students in London

### *PhD Sustainability Academy*

The first pan-Canadian PhD Sustainability Academy, a high impact forum for developing tomorrow's thought leaders, is hosted by the Building Sustainable Value Research Centre at Ivey

### *"Learning from Leaders" course implemented*

Jim Irving, President and CEO of J.D. Irving Limited, speaks to HBA students as part of Professor Ken Hardy's "Learning from Leaders" class. Instead of reading about leaders, Ken Hardy designed a course for Ivey HBA students to learn lessons on leadership directly from some of the major leaders in Canadian business

## October

### *Richard G. Ivey Speaker Series*

Richard Nesbitt, HBA '78, Chairman and CEO, CIBC World Markets, speaks to HBA students on the changing global economy as part of the distinguished Richard G. Ivey Speaker Series

### *Homecoming 2008*

Homecoming attracts more than 1,000 alumni and guests with 20 reunion classes raising \$1.8 million in pledges and gifts in support of the School

### *National Family Business Day*

Keynote speaker Hartley Richardson helps Ivey and the Canadian Association of Family Enterprise (CAFE) celebrate National Family Business Day

## A Year in Review

### *Site Selected for New Landmark Ivey Building*

Jon Love, HBA '76, Managing Partner, KingSett Capital Inc and Chair of the Building Task Force, helps select and approve the site for new landmark Ivey building. The new building will be located on the existing soccer fields on Western Road in front of Brescia University College

### *Ivey Hosts first Canadian MBA Leadership Conference*

The Honourable Brian Tobin headlines as keynote speaker for the inaugural Canadian MBA Leadership Conference, hosted by Ivey MBA students

### *Ivey Family bestows generous donation*

The Ivey Family donates an additional \$500,000 from the Estate of Beryl Ivey to support corporate social responsibility initiatives at the School, doubling the existing endowment Beryl created in 2007

### *Ivey Business Leader Award Dinner*

The Toronto Alumni Chapter's annual Ivey Business Leader Award honours Dominic D'Alessandro, President and CEO, Manulife Financial at a sell-out crowd of Canada's most prominent business people, raising over \$310,000 in net proceeds in support of students awards and faculty

### *James Hemerling host the Ivey Idea Forum*

Consultant and Globality author James Hemerling, MBA '90, hosts the Ivey Idea Forum to discuss how to succeed in this new era of international business, with students participating via videocast from London

### *Telecommunications Hall of Fame Welcomes Ivey Dean*

Dean Carol Stephenson inducted into Telecommunications Hall of Fame

## November

### *Ivey Hong Kong celebrates 10 years*

Former US Secretary of State, Colin Powell speaks to a distinguished crowd of alumni, students and dignitaries at a gala event in Hong Kong to celebrate the 10th anniversary of Ivey's Hong Kong campus

### *David Dodge speaks to students*

David Dodge, former Governor of the Bank of Canada, headlines the Lawrence National Centre annual Thomas d'Aquino Leadership Lecture for students, providing insights on the cause of the current financial crisis and potential solutions

### *Ivey Alumnae are among Canada's Most Powerful Women*

Ivey co-sponsors Canada's Most Powerful Women: Top 100 Summit and Teri Currie EMBA '98, TD—Executive Vice President, Human Resources, Cynthia Devine HBA '87, Tim Hortons—Chief Financial Officer, EVP of Finance, Lisa Pankratz HBA '85, Mackenzie Cundill Investment Management Ltd—President are honoured

### *Ivey Students compete for a chance to see Alan Greenspan*

Ivey and the Toronto Board of Trade co-host Alan Greenspan, former chairman of the US Federal Reserve. For addressing what they'd do as Federal Chair for a day in a video contest, three students from the Richard Ivey School of Business won tickets to the event

### *13th Annual BCG Case Competition*

First year HBA students participate in the 13th annual BCG Case Competition and are judged by alumni, faculty, second year HBA students and corporate representatives from Boston Consulting Group

### *Dean Stephenson among Women in the Lead*

Dean Carol Stephenson speaks at a special Women in the Lead book launch for Ivey Alumna in Vancouver

## December

### *Inside the C-Suite attracts high profile Ivey Alumni*

Ivey's top-quality prospects meet with Ivey alumni Tim MacDonald, Partner and President, A.T. Kearney, David McCann, Vice-President, Head of Relationship Investments, Canadian Pension Plan Investment Board, and Sylvia D. Chrominska, Executive Vice-President, Human Resources and Public, Corporate & Government Affairs Scotiabank at the National Club in Toronto, for Inside the C-Suite, a conversation about managing a successful career

### *China Study Trip sends students overseas*

Fifty MBA students embark on an international study trip to Beijing, Shanghai and Hong Kong



## Message from the Board Chair

Arkadi Kuhlmann, HBA '71, MBA '72,  
Chair, Ivey Advisory Board; Chairman & CEO, ING Direct USA

The power of the Ivey network was alive and well in 2008. Last year over 3,500 alumni engaged with the School, and many donated thousands of volunteer hours through their involvement with leadership boards, committees, chapters, reunions and the partnership program, to name a few.

The passion and commitment of Ivey alumni never ceases to amaze me. Here are just a few examples of how alumni gave back to the School:

- 1,500 alumni mentored students through the Ivey Alumni Partnership Program
- 2,000 alumni attended events, including Homecoming, and alumni chapter and student events around the world
- 3,000 alumni and friends contributed to the Ivey Annual Fund, donating a record \$3.5 million
- 700 alumni participated in The Ivey Ring Tradition Ceremony, bringing the total number of alumni who have received the Ring to more than 3,400 since 2004
- 1,000 alumni and special guests attended two Ivey flagship events: The Ivey Business Leader Award Dinner and the Hong Kong Campus 10th Anniversary Celebration, which both generated unprecedented volunteer and sponsorship support and attracted sold-out crowds of some of the world's most prominent business leaders

As you can see, giving back comes in many different forms, and I am deeply grateful to everyone who supports the School. I would also like to thank the countless alumni who are involved informally: from taking the time to refer a student to one of our programs, provide us with a great case lead (every business issue would make a great case!), hiring an Ivey student or coming back to speak in the classroom. Your involvement enriches the student experience both directly and indirectly. Everything we do as alumni serves to strengthen the Ivey network.

Thank you to the thousands of alumni and friends who lent their time and support to the School this year. It has made a difference and I hope you have found the experience as rewarding as I have.

Sincerely,

## Inspiring Leadership by Example



### **The Ivey Family Challenge Fund for Unrestricted Support.**

For more than 60 years, the Ivey family have been instrumental in securing the School's place of prominence in Canada through their visionary approach and countless contributions of time, influence, advice and funding.

In 2007, the Ivey family once again increased their leadership support for the School by challenging the School's closest friends to step up and support the Business School through unrestricted gifts. The Ivey family committed \$3 million to an unrestricted endowment to be matched by an additional \$3 million in unrestricted gifts from our alumni and friends. In addition, a \$1 million bequest from Richard M. Ivey will ultimately be added to the Ivey Endowment, which will bring the total support from the Ivey family for this campaign to \$6.5 million. In time, the \$7 million unrestricted endowment will generate \$315,000 annually to support the School's highest priorities and impact every area that contributes to the "Ivey Experience." The Ivey family believe the onus is on the School's closest friends to entrust Ivey with their unrestricted support.

In many ways, unrestricted donations from our alumni and friends are the most valuable gifts we receive. They form a critical resource that allow Ivey to respond immediately to our most pressing needs and seize emerging opportunities as they arise. To sustain Ivey's long-term funding requirements,

including the unrestricted endowment fund, one of the main priorities of the current comprehensive campaign is to double our current endowment so Ivey has ongoing financial resources to depend on.

Since the challenge was issued, \$1.5 million has been committed in response to the Ivey family's exceptional call for support. Significant donations from Louis Lagassé, MBA '73, C. John Schumacher, MBA '84, Larry Shaw, HBA '62, and Dean Carol Stephenson have launched the challenge fund with an inspiring start in its first year. In addition, \$500,000 was donated by friends and colleagues of Chuck Winograd, MBA '71, who recently retired as Chairman and CEO of RBC Capital Markets, in honour of his many contributions to RBC, Ivey and the Canadian business community. These generous donors share the Ivey family's vision to build on the School's foundation of excellence and support all critical areas of Ivey.

The importance of unrestricted donations cannot be overstated. Business school budgets consist of high fixed costs and revenue streams that are vulnerable to economic and demographic variables. A strong endowment provides the School with financial stability in all economic climates. With the Ivey family's leadership gift, combined with the commitment of donors who share their passion for the Ivey Business School, they are sending a strong message of support for the School's strategy and to the next generation of leaders who benefit from a world-class Ivey education.

## Competition Inspires Young Entrepreneurs



### **IBK Capital—Ivey Business Plan Competition Marks Ten Years.**

The IBK Capital—Ivey Business Plan Competition is Canada's premiere student business plan competition, and 2008 marked its tenth anniversary.

With top entrepreneurial teams drawn from graduate schools across the country, the competition offers students an opportunity to present innovative business plans to potential investors, while providing them an advance look at up-and-coming Canadian entrepreneurs. The opportunities and experiences outside the classroom are a critical element to the Ivey Experience.

Bill White, MBA '69, President of IBK Capital Corp understands what it takes to be a successful entrepreneur. As co-owner and founder of an independent privately-owned investment banking firm, he has not only grown his own company from start up, he and his team have sought out entrepreneurs and their junior companies for investment opportunities since 1989.

"The Competition was something we knew we wanted to get involved in and support," says Bill, whose company

has been the lead supporter of the Competition since its inception in 1998. The IBK Capital—Ivey Business Plan Competition, as it has been known since 2003, continues to draw graduate business students from across Canada, and has been the sole Canadian entry point to the prestigious MOOT Corp Global Business Plan in Texas.

"We consider it an honour and a privilege to be part of this annual event," says Bill, "and after ten years, along with the judges who attend the event year after year, we have become like a big family of venture capitalists." Having successful alumni entrepreneurs as mentors and industry experts for students to learn from is an exceptional learning opportunity for all the students involved in the Competition.

Bill's plan is to continue his commitment and leadership of the IBK Capital—Ivey Business Plan Competition for at least the next five years. "The Competition is an incredibly enjoyable event for me, for my son, Michael—also an Ivey MBA grad—and for the rest of the IBK team. We enjoy the intense competition amongst the teams and their passion for their start ups. Experiencing first hand the enthusiasm of these young entrepreneurs as they deliver their pitches inspires me to support them year after year."



# Operating Budget

	F2008 Actual (\$000)		F2007 Actual (\$000)	
<b>Revenue</b>				
Enrolment Grant Revenue	\$8,012	11.1%	\$8,069	11.8%
Tuition	\$34,889	48.3%	\$33,958	49.6%
Pre- Business Funding	\$1,680	2.3%	\$1,550	2.3%
Course fees - Non Degree Programs	\$12,034	16.7%	\$10,221	14.9%
Publishing	\$3,645	5.0%	\$3,922	5.7%
Conference Centres	\$6,518	9.0%	\$4,079	6.0%
Donations-Total	\$10,776	14.9%	\$11,648	17.0%
Less - Endowed and Restricted Donations	(\$8,142)	-11.3%	(\$8,907)	-13.0%
Endowment Interest	\$1,052	1.5%	\$1,182	1.7%
Recoveries & Miscellaneous	\$1,802	2.5%	\$2,710	4.0%
<b>Total revenue</b>	<b>\$72,266</b>	<b>100.0%</b>	<b>\$68,432</b>	<b>100.0%</b>
<b>Direct variable expenses</b>				
Program accommodation and meals	\$6,979	9.7%	\$6,226	9.1%
Student and teaching materials	\$2,509	3.5%	\$2,580	3.8%
Scholarships	\$3,490	4.8%	\$3,843	5.6%
Receptions	\$795	1.1%	\$821	1.2%
Other	\$233	0.3%	\$310	0.5%
<b>Total direct variable costs</b>	<b>\$14,006</b>	<b>19.4%</b>	<b>\$13,780</b>	<b>20.1%</b>
<b>Contribution</b>	<b>\$58,260</b>	<b>81.6%</b>	<b>\$54,652</b>	<b>79.9%</b>
Direct fixed expenses-schedule	\$27,855	38.5%	\$26,940	39.4%
Administration expenses-schedule	\$23,073	31.9%	\$21,156	30.9%
UWO Services	\$6,571	9.1%	\$6,290	9.2%
<b>Surplus</b>	<b>\$761</b>	<b>1.1%</b>	<b>\$266</b>	<b>0.4%</b>

## Schedule of Expenses

	F2008 Actual (\$000)		F2007 Actual (\$000)	
<b>Direct Fixed Expenses</b>				
Faculty Salaries and Benefits	\$18,043	25.0%	\$17,727	25.9%
Faculty Fees	\$3,570	4.9%	\$2,939	4.3%
Utilities	\$319	0.4%	\$316	0.5%
Marketing Costs	\$3,712	5.1%	\$3,726	5.4%
Property, operations and maintenance	\$300	0.4%	\$219	0.3%
Research	\$1,247	1.7%	\$1,380	2.0%
Computer equipment and software	\$567	0.8%	\$504	0.7%
Other direct fixed expenses	\$97	0.1%	\$129	0.2%
<b>Total Direct Fixed Expenses</b>	<b>\$27,855</b>	<b>38.5%</b>	<b>\$26,940</b>	<b>39.4%</b>
<b>Administration Expenses</b>				
Staff Salaries and Benefits	\$12,804	17.7%	\$12,070	17.6%
Travel	\$932	1.3%	\$1,165	1.7%
Amortization	\$1,431	2.0%	\$1,100	1.6%
Bank Charges & Interest	\$1,096	1.5%	\$1,036	1.5%
Rentals/Leases	\$82	0.1%	\$53	0.1%
General Administration	\$1,422	2.0%	\$1,432	2.1%
Mailing	\$299	0.4%	\$198	0.3%
Printing	\$286	0.4%	\$328	0.5%
Telephone	\$302	0.4%	\$342	0.5%
Building Rent	\$2,567	3.6%	\$1,798	2.6%
Building alterations and maintenance	\$522	0.7%	\$532	0.8%
Management Fees	\$354	0.5%	\$279	0.4%
Training & Development	\$131	0.2%	\$197	0.3%
Consulting and Professional fees	\$845	1.2%	\$704	1.0%
Other	\$0	0.0%	(\$78)	-0.1%
<b>Total Administration Expenses</b>	<b>\$23,073</b>	<b>31.9%</b>	<b>\$21,156</b>	<b>30.9%</b>

# Boards and Councils

Ivey is fortunate to have the support and counsel of exceptional business leaders. We are proud to list the members of our many boards and appreciate their passion and commitment, which help propel the School forward.

## Ivey Advisory Board

**Arkadi R Kuhlmann**, HBA '71, MBA '72  
Chair, Ivey Advisory Board  
Chairman & CEO, ING Direct USA

**G F Kym Anthony**, MBA '80

**Paul Atkinson**, HBA '86  
Chairman & CEO, Casero Inc/AudienceViewSoftware Corp

**E Scott Beattie**, HBA '81, MBA '86  
President, Chairman & CEO, Elizabeth Arden Inc

**Lorne Braithwaite**, MBA '69  
Park Avenue Holdings

**Laurie G Campbell**, MBA '89  
Managing Director, Debt Capital Markets,  
Banc of America Securities LLC

**Ronald D Charles**, MBA '71  
Managing Partner, Caldwell Partners International Inc

**Dr Henry K S Cheng**, HBA '71, MBA '72  
Managing Director, New World Development Co Ltd

**Andrew Chisholm**, MBA '85  
Managing Director, Investment Banking,  
Goldman Sachs Group Inc

**Sylvia Chrominska**, HBA'75  
Executive Vice President, Human Resources & Public,  
Corporate & Government Affairs, Scotiabank

**Lisa J Colnett**, HBA '81  
Senior Vice President, Kinross Gold Corporation

**George A Cope**, HBA' 84  
President & Chief Operating Officer, Bell Canada

**David Cornhill**, MBA '80  
Chairman & CEO, AltaGas Income Trust

**Patrick Crowley**, HBA '74  
CFO, OMERS Administration Corporation

**Dr Paul T Davenport**,  
President & Vice Chancellor, The University of Western Ontario

**Darin Deschamps**, HBA '87  
Managing Director, Corporate & Investment Banking,  
National Bank Financial

**Kirsten J Feldman**, MBA '84  
Advisory Director, Morgan Stanley Dean Witter & Co

**Barbara H Fraser**, HBA '71

**Serge Gouin**, HBA '65, MBA '66  
Chairman of the Board, Quebecor Media Inc.

**Paul J Hill**, MBA '69  
President & CEO, Harvard Developments Inc.

**Michael Hill**, HBA '89  
Managing Director & Co-Head, Deutsche Bank

**Tim Hockey**, EMBA '97  
President & CEO, TD Canada Trust

**Tim E Hodgson**, MBA '88  
CEO, Goldman Sachs Canada

**James L Hunter**, MBA '76  
Chairman & CEO, NexGen Financial LP

**Richard W Ivey**, HBA '72  
Chairman & CEO, Ivest Corporation

**Donald K Jackson**, MBA '67  
Founder Chairman & CEO, Parkview Capital Partners Inc.

**Donald K Johnson**, MBA '63  
Senior Advisor, BMO Capital Markets

**Michael M Kanovsky**, MBA '73  
President, Sky Energy Corporation

**David J Kassie**, MBA '79  
Principal Chairman & CEO, Genuity Capital Markets

**Edward S Kennedy**, HBA '81  
President & CEO, The North West Company

**Louis Lagassé**, MBA '73  
Chairman & CEO, Groupe Lagassé

**Gilles Lamoureux**, MBA '66  
Vice Chairman, Ernst & Young Orenda Corporate Finance Inc.

**Jean-Yves Leblanc**, MBA '73  
Corporate Director

**Stephen D Lister**, MBA '85  
Managing Partner, Imperial Capital Group

**Jon E Love**, HBA '76  
Managing Partner, KingSett Capital Inc.

**Terry Lyons**, MBA '74  
Chairman, Northgate Minerals Corporation

**Timothy E MacDonald**, HBA '81, MBA '88  
President, A.T. Kearney Limited

**Christine A Magee**, HBA '82  
President & Co-Founder, Sleep Country Canada

**Chris R Matthews**, MBA '72  
Chairman, Hay Group

**Michael H McCain**, HBA '79  
President & CEO, Maple Leaf Foods Inc.

**J Hugh MacDiarmid**, HBA '74  
President & CEO, Atomic Energy of Canada Ltd.

**Stephen D McDonald**, MBA '83  
Co-Head, Scotia Capital Inc.

**Donald J McDougall**, MBA '61  
President, Rambri Management Inc.

**Pierre L Morrissette**, MBA '72  
Founder President & CEO, Pelmorex Media Inc.

## Boards and Councils

**Michael J Needham**, MBA '68  
Founder & Chairman, SimEx! Iwerks

**Robert E M Nourse**, MBA '64  
President, ARENA Growth Ventures

**Kevin A O'Brien**, HBA '93  
Managing Partner, SECOR Consulting

**T Kevin O'Leary**, MBA '80  
Partner, NorthCoast Capital LLP

**R Jeffrey Orr**, HBA '81  
President & CEO, Power Financial Corporation

**Gilles Ouellette**, HBA '69, MBA '70  
President & CEO, Private Client Group,  
BMO Capital Markets

**James Prieur**, MBA '75  
CEO, Conseco Inc.

**Bruce H Reid**, MBA '64

**Larry Rosen**, MBA '81  
Chairman & CEO, Harry Rosen Inc.

**Paul Sabourin**, MBA '80  
Chairman & Chief Investment Officer, Polar Securities Inc.

**Heather Shaw**, MBA '87  
Executive Chair, Corus Entertainment Inc.

**Joseph C Shlesinger**, MBA '86  
Managing Director, Callisto Capital LP

**Douglas E Speers**, MBA '70  
Chairman, Emco Corporation

**Carol Stephenson**  
Dean, Richard Ivey School of Business

**F Martin Thrasher**, HBA '73

**Donald L Triggs**, MBA '68

**V Prem Watsa**, MBA '74  
Chairman & CEO, Fairfax Financial Holdings Ltd

**Andrew B Wiswell**, MBA '80  
President & CEO, NAL Resources Trust

**Donald P Woodley**, MBA '70

### *Emeritus Members*

**John A Armstrong**

**Ralph M Barford**

**Thomas H Brent**, HBA '59  
Chairman, Medihold Limited

**Robert V Brouillard**, MBA '66

**Paul G Desmarais**  
Chairman of the Executive Committee Power Corporation of Canada

**Dr Geno F Francolini**, HBA '54  
President & CEO, Xenon Capital Corp

**Dr Kenneth W J Harrigan**, HBA '51  
President, K W Harrigan Consultants

**Dr Richard M Ivey**, HBA '47  
Chairman, Ivest Corporation

**Robert W Luba**, MBA '67  
President, Luba Financial Inc.

**Dr Grant L Reuber**  
Chairman of the Board, Canada Deposit Insurance Corporation

**C Richard Sharpe**, HBA '50

**Allan R Taylor**

**William Shurniak**  
Chairman & President, Shurniak Art Gallery

**Dr David B Weldon**, HBA '47

**William P Wilder**,  
President, W P Wilder

## Asian Advisory Board

**Dr Henry Cheng**, HBA '71, MBA '72, LLD  
Chair, Asian Advisory Board  
Managing Director, New World Development Co. Ltd.

**Victor Apps**  
Chairman, Manulife International Ltd.

**Dr Paul Beamish**, HBA '76, PhD '85  
Director, Asian Management Institute, Richard Ivey School of Business

**Vincent H C Cheng**  
Chairman, Hong Kong & Shanghai Banking Corp.

**Dr Janet De Silva**, EMBA '94  
CEO, Retail CHINA Limited

**James Horne**, MBA '80  
President & CEO, Colliers International

**John Kao**, HBA '76  
Director, WorldVest Holdings Ltd.

**Leonie Ki**  
New World China Enterprises Projects Limited

**Daniel Lam**, EMBA '00  
Managing Partner, Hampton Securities (Asia) Limited

**Patrick Lam**  
Executive Director, NWS Holdings Ltd.

**Eddie Law**, HBA '91  
Executive Director, Goldman Sachs (Asia) L.L.C.

**Dr Simon Leung**, LLD  
President, Asia Pacific, Motorola Asia Pacific Limited.

**Yoshihide Nakamura**  
President & CEO, Uldage Inc.

**Kishore K Sakhrani**, MBA '83  
Director, ICS Trust (Asia) Ltd.

**Rick Siemens**  
Chairman, E-Kong Group Ltd.

**Kathleen Slaughter**  
Associate Dean, Asia  
Cheng Yu Tung, Management Institute,  
Richard Ivey School of Business

**Mark Staudenmann**, EMBA '05  
Executive Director, UBS AG

## Boards and Councils

**Carol Stephenson**  
Dean, Richard Ivey School of Business

**Dr Allan Zeman, LLD**  
Chairman, Lan Kwai Fong Holdings Limited

**Dr Huaying Zhang, EMBA '03**  
Director, Health & Wellness for Asia Beverage Institute  
The Coca-Cola Company

### European Advisory Board

**Barbara J Kovacs, MBA '83**  
Chair, European Advisory Board, London, UK

**Robert V Brouillard, MBA '66**  
Chepstow, UK

**William J Clark, MBA '73**  
Managing Director, Leveraged Finance,  
Royal Bank of Scotland, London, UK

**Brendan Clouston, MBA '79**  
Inverness-shire, UK

**Jeffrey E Couch, HBA '92**  
Director, Credit-Suisse, London, UK

**David Graham, London, UK**

**Michel Gréco, MBA '68**  
Sainte Foy-les-Lyon, France

**Vijay P Jain, MBA '71**  
Managing Director, TDT International, Silkeborg, Denmark

**Philip C Meyers, MBA '89**  
Managing Partner, Monitor Company Europe Ltd.,  
Amsterdam, Netherlands

**Nicholas Paine, HBA '83**  
CEO, Quinto Investments, London, UK

**Michael K Phair, MBA '74**  
London, UK

**Dipak K Rastogi, MBA '82**  
Vice Chairman, Emerging Markets,  
Citigroup Investments Inc., London, UK

**Carol Stephenson**  
Dean,  
Richard Ivey School of Business, London, Canada

**Thomas R Zeeb, HBA '86**  
Head of Customer Relations Europe UK & USA  
Clearstream Banking, Luxembourg

### Alumni Board of Directors

**Kevin O'Brien, HBA '93**  
Chair, Alumni Board of Directors  
Managing Partner, SECOR Consulting

**Mark Healy, MBA '05**  
Vice Chair, Alumni Board of Directors  
Partner, Torque Customer Strategy

**Sabrina Anzini, HBA/LLB '02**  
Policy Advisor, Social Affairs Office of the Prime Minister

**Rob Attwell, MBA '99**  
Vice President, IMPM Solutions Inc

**Mark Brown, MBA '95**  
CFO and General Manager, Red 8 Studios

**Liz Butler, HBA '04**  
Senior Accountant, Koster Spinks & Koster, LLP

**Jasper Chan, MBA '05**  
Manager, Internet Capability Group, Cisco Systems Inc.

**Erin Chen, HBA '06**  
Consultant, Accenture Inc

**Kevin Clement, HBA '00, MBA '07**  
Director, Imason Inc

**Dave DeNoble, HBA '99**  
Vice President,  
Smith Company Commercial Real Estate Services

**Leo De Summa, EMBA '04**  
Marketing, Great West Life

**Marco Di Girolamo, MBA '00**  
Director, UBS Securities Canada Inc

**Andrew Fletcher, HBA '93, MBA '99**  
Vice President, Citi Cards Canada

**Stephen Hughes, HBA '84, MBA '88**  
Senior Vice President, SVB Financial Group

**Alain Huneault, MBA '01**  
Director, Business Development, ConjuChem Inc

**Fraser Johnson, HBA '82, MBA '92, PhD '95**  
Associate Professor, Richard Ivey School of Business

**Fred Isaak, MBA '96**  
Director, Business Performance Services, KPMG LLP

**Steve Kenning, HBA '05**  
Senior Associate Consultant, Bain & Company

**John Khajadourian, MBA '02**  
Vice President, Corporate Development,  
Brookfield Asset Management Inc

**Sabrina Kumar, HBA '06**

**Harro Lauprecht, MBA '02**  
Manager, Health Promotions Programs,  
University of British Columbia

**Miles McDonald, EMBA '99**  
President, Voltaire Power Company

**Robb McNaughton, MBA/LLB '00**  
Associate, Fraser Milner Casgrain LLP

**Sean Naylen, MBA '04**  
Vice President, Barclays Capital

**Alexa Nick, MBA '95**  
Owner, A. Nick Consulting

**Anthony Ostler, MBA '97**  
Senior Vice President & Director, Canaccord Capital Corporation

**Ann Parkin, MBA '01**

**Gail Rodwell-Simon, MBA '96**  
Group Planning Manager, Zeller's Ladies Sports Wear

## Boards and Councils

**Shaloo Savla**, HBA '06  
Analyst, Boston Consulting Group of Canada Limited

**Alan Small**, HBA '73, MBA '74  
Partner, Ray & Berndtson Lovas Stanley

**Mark Staudenmann**, EMBA '05  
Executive Director, UBS Securities Canada Inc

**Gary Svoboda**, MBA '83  
President, Adventus Research

**Dan Vickery**, EMBA '02  
President, Bioensemble Ltd

**Anton Vidgen**, HBA '06  
Analyst, Oliver Wyman

**Jim White**, HBA '74, MBA '75  
Senior Partner, How Lawrence White Bowes

**Chet Choon Woon**, MBA '94  
Business Development, Akroo

**Krista Wylie**, HBA '94  
Conundrum Adventures Inc

**Lisa Zhao**, MBA '03  
Senior Manager, Maple Leaf Foods Incorporated

**Linda Zhou**, MBA '04  
General Manager, CareerTemp Consulting

## Annual Fund Council

**Darin Deschamps**, HBA '87  
Chair, Annual Fund Council  
Managing Director, National Bank Financial

**Laurie Campbell**, MBA '89  
Managing Director, Banc of America Securities LLC

**Jim Cumming**, HBA '73  
President & Owner, Trillium Management Inc

**Brian Huen**, HBA '98, MBA '03  
Director, UBS Securities

**Sarah Morgenstern**, MBA '93  
Founder, SavvyMom.ca

**Boyd Pederson**, MBA '96  
Vice President & Director, Boston Consulting Group

**Michael Pun**, HBA '89  
Managing Director, RBC Capital Markets

**Al Sellery**, HBA '87  
Managing Partner, Ironbridge Equity Partners

**Sergei Tchetvernykh**, MBA '94  
Chief Executive Officer, Infinium Capital Corp

## Entrepreneurship Council

**David Anyon**, EMBA '97  
Chair, Entrepreneurship; Corporate, Advisor & Director

**Ian Aitken**, HBA '87  
Managing Partner, Pembroke Management Ltd

**Bruce Barker**,  
Partner, Bennett Jones LLP

**Andrew Barnicke**, HBA '83  
Senior Vice President, DTZ Barnicke Investment Group

**Michael Boyd**, MBA '76  
Managing Partner, Argosy Bridge Fund

**Peter Clark**, HBA '69  
Chairman & CEO, CPI Plastics Group Ltd

**Ron Close**, HBA '81  
Executive Entrepreneur-in-Residence  
Pierre L Morrissette Institute for Entrepreneurship

**Lisa J Colnett**, HBA '81  
Senior Vice President, Kinross Gold Corporation

**Bob Dhillon**, EMBA '98  
President & CEO, Mainstreet Equity Corp

**Bill Di Nardo**, HBA '91  
CEO, Eventi

**Jim Hall**, HBA '71  
Acting CEO, Journal Register Company

**Deland Jessop**, MBA '02  
Founding Partner, PolicePrep

**Pierre Morrissette**, MBA '72  
President & CEO, Pelmorex Media Inc

**Eric Morse**  
Associate Dean, Programs, Richard Ivey School of Business

**Russell Payson**, MBA '70  
Chairman & CEO, Skyservice Airlines

**Robert Peterman**, MBA '02  
Senior Manager, TSX Group Inc

**Teddy Rosenberg**, HBA '73  
Corporate Advisor & Director

**John Rothschild**, MBA '73  
Chairman & CEO, Prime Restaurants of Canada Inc.

**Paul Sabourin**, MBA '80  
CEO, Polar Securities Inc.

**Carol Stephenson**  
Dean, Richard Ivey School of Business

**Stephen Suske**, MBA '77  
Vice Chair & Co-CEO, Chartwell Seniors Housing REIT

**Stewart Thornhill**, Executive Director,  
Pierre L Morrissette Institute for Entrepreneurship

**Mike White**, MBA '00  
VP Finance, IBK Capital Corporation

**David Wright**, HBA '83  
Partner, Agora Consulting Partners Inc

## Boards and Councils

### Lawrence Centre Advisory Council

**Thomas d'Aquino**  
Chair, Lawrence Centre Advisory Council  
President and Chief Executive,  
Canadian Council of Chief Executives

**Jalynn H Bennett**  
President, Jalynn H Bennett and Associates Ltd.

**Donald W Campbell**  
Senior Strategy Advisor, Davis LLP

**Kevin Chan, HBA '00**  
Executive Assistant and Director,  
Office of the Clerk of the Privy Council

**Edmund Clark**  
President and CEO, TD Bank Financial Group

**Dianne Cunningham**  
Director, Lawrence National Centre for Policy and Management

**Jim Dinning**  
Chairman, Western Financial Group

**Anthony Ferrari, MBA '98**  
President, Bridgepoint Group

**Blake Goldring**  
Chairman & CEO, AGF Management Limited

**Jack Lawrence, HBA '56**  
Chairman & Founder, Lawrence & Company

**Rebecca MacDonald**  
Chair and CEO, Energy Savings Income Fund

**Jeffrey Simpson**  
Columnist, The Globe and Mail

**Carol Stephenson**  
Dean, Richard Ivey School of Business

**Vic Young, MBA '68**  
Corporate Director

### Health Sector Council

**Gregg Szabo**  
Executive Director, Corporate Affairs, Merck Frosst Canada

**Dr Peter Armstrong**  
Chief Medical Officer, Shriners Hospital for Children

**Francesco Bellini**  
Chairman, President & CEO, Neurochem Inc

**William Charnetski**  
VP Corporate Affairs & General Council, AstraZeneca

**John Fanaras**  
President, Nucro-Technics Inc

**Richard Francis**  
President & General Manager, Biogen Idec Canada Inc.

**Neil Fraser, MBA '83**  
President, Medtronic of Canada Ltd.

**Ida Goodreau**  
President & CEO, Vancouver Coastal Health Authority

**Michel Greco, MBA '68**

**Ed Gudaitis, MBA '93**  
General Manager, Gilead Sciences Canada

**Jim Hatch**  
Professor, Richard Ivey School of Business

**Dr Carol Herbert**  
Dean, Schulich School of Medicine & Dentistry

**Dr Kellie Leitch**  
Director, Ivey Health Sector Stream,  
Richard Ivey School of Business

**Terry McCool**  
Director & Vice President, Corporate Affairs, Eli Lilly Canada Inc.

**Dr Brent Norton, MBA '89**  
President & CEO, PreMD Inc.

**Graham Scott**  
President, Graham Scott Strategies Inc.

**Cathy Seguin**  
Vice President, The Hospital for Sick Children

**Carol Stephenson**  
Dean, Richard Ivey School of Business

**Dr Paul Walker**  
President & CEO, Spectral Diagnostics Inc.

# Ivey's Investors

## Lifetime Giving

### \$10,000,000+

The Richard M Ivey Family &  
The Richard Ivey Foundation

### \$5,000,000 to \$9,999,999

Dr Henry Cheng, HBA '71, MBA '72

### \$2,000,000 to \$4,999,999

Anonymous  
Anonymous  
Canadian Tire Corporation Ltd  
Corus Entertainment  
Great-West Life, London Life & Canada Life  
Paul & Carol Hill, MBA '69  
ING Bank FSB,  
ING Canada & ING Bank of Canada  
R Jack Lawrence, HBA '56  
Paul R MacPherson, MBA '63  
Ministry of Education & Training  
Pierre L Morrissette, MBA '72  
C John Schumacher, MBA '84  
Scotiabank  
TD Bank Financial Group  
Valcom Ltd

### \$1,000,000 to \$1,999,999

Ralph M Barford  
BMO Financial Group  
Bill & Anne Brock Family  
CIBC  
Brendan R Clouston, MBA '79  
Donald K Johnson, MBA '63  
Lee Foundation  
Eugene & Lori Melnyk  
PMAC Canada  
RBC Foundation  
Richard & Jean Ivey Fund  
Donald L Triggs, MBA '68

### \$500,000 to \$999,999

Anonymous  
Robert V Brouillard, MBA '66  
Canadian Pacific Ltd  
G Mark Curry, MBA '69  
Ernst & Young  
William H Fuller, MBA '61  
Imperial Life Assurance Company of Canada  
IVEY Alumni Association Toronto Chapter  
J Armand Bombardier Foundation  
Donald K Jackson, MBA '67  
David Kassie, MBA '79 & Susan Harris, MBA '82  
Arkadi Kuhlmann, HBA '71, MBA '72  
Jon & Nancy Love Foundation  
MacLean Hunter Ltd  
MBA Association  
Nanyang Business School  
Nortel Networks Corporation

Shaw Communications Inc  
William Shurniak

### \$250,000 to \$499,999

John Adamson, MBA '72  
AstraZeneca Canada Inc  
E Scott Beattie, HBA '81, MBA '86  
Alexander F L Chan, HBA '78  
Andy Chisholm, MBA '85  
Citigroup Inc & Citibank Canada  
Export Development Canada  
Margaret & Jim Fleck, HBA '53  
Ford Motor Company of Canada Ltd  
George Weston Ltd  
Geoff Gudewill, MBA '83  
Nick Gudewill, MBA '74  
Peter Gudewill, HBA '73  
Sam Gudewill, HBA '77  
Hewlett-Packard (Canada) Ltd  
HongKong Pei Hua Education Fdn  
John Dobson Foundation  
Kraft Foods Inc  
Louis Lagasse, MBA '73  
Daniel Lam, EMBA '00  
S W Eddie Law, HBA '91  
PricewaterhouseCoopers LLP  
Bruce H Reid, MBA '64  
Roman Corporation Ltd  
W Keith Smith, MBA '60  
Society of Management Accountants of Ontario  
Lawrence G Tapp  
Valleydene Corp Ltd

### \$100,000 to \$249,999

Anonymous  
Anonymous  
Abitibi-Price Inc  
Accenture Inc  
Adobe Corp  
Gwen & the Late Ben Anders, HBA '47, MBA '48  
Angiotech Pharmaceuticals Inc  
Audrey & Donald Campbell Fdn  
Tom Bailey, MBA '62  
Bain & Company Canada Inc  
Thomas K Barber, MBA '79  
Bayer Inc  
Dr Francesco Bellini  
Biogen Idec Canada  
Biovail Corporation  
Bruce & Betty Birmingham  
Boston Consulting Group  
David Braley  
Tom Brent, HBA '59  
Ronald Bresler, MBA '83  
Burgundy Asset Management Ltd  
Alice & Grant Burton, MBA '68  
Laurie G Campbell, MBA '89  
Canadian International Development Agency  
Ciba-Geigy Canada  
Robert A R Clouston, MBA '72

Lisa Colnett, HBA '81  
Scott Cooper, HBA '82  
George A Cope, HBA '84  
James B Cumming, HBA '73  
John R Currie, HBA '60  
Deloitte & Touche LLP  
Darin Deschamps, HBA '87 & Lisa Deschamps, HBA '87  
DuPont Canada Inc  
Eli Lilly Canada Inc  
ERA Foundation  
Dr & Mrs Geno F Francolini, HBA '54  
General Motors of Canada Ltd  
Gilead Sciences Canada Inc  
GlaxoSmithKline Inc  
Globe & Mail  
Ken R Good Family  
Robert J Gorman, MBA '77  
HBA Association  
Timothy Hodgson, MBA '88 & Linda Netten  
Lonsdale Holland, MBA '57  
HSBC Bank Canada  
Colin L Hubling, HBA '53  
IBK Capital Corporation  
IBM Canada Ltd  
Imasco Ltd  
Ivex Investments Ltd  
Jarislowsky Foundation  
Jean Jeffries  
Michael M Kanovsky, MBA '73  
Gerald L Knowlton, HBA '54  
KPMG Foundation  
Nicole & Gilles Lamoureux, MBA '66  
Landmark Communications Foundation  
Pierre Lapointe, MBA '83  
Dr Michiel R Leenders, MBA '59  
Stephen D Lister, MBA '85  
Magna International Inc  
Manulife Financial Corporation  
Maple Leaf Foods Inc  
Chris & Michael McCain, HBA '79  
McColl-Frontenac Inc  
Steve McDonald, MBA '83  
McKinsey & Company  
MDS Inc  
Medtronic of Canada Ltd  
Merck Frosst Canada Inc  
Mical Equities Ltd  
National Bank Financial Group  
Michael Needham, MBA '68  
Nelson M Davis Trust Fund  
New World Development Co Ltd  
Linda & Kevin O'Leary, MBA '80  
Jeffrey Orr, HBA '81 & Suzanne Legge  
Michael & Margot Phair/Phair Family Foundation  
Pelmorex Media Inc  
Petro-Canada Inc  
Picchio International  
PreMD Inc  
C James Prieur, MBA '75



## Ivey's Investors | Lifetime Giving

Procter & Gamble Inc  
Purchase Family  
Dipak Rastogi, MBA '82  
Rio Tinto Alcan Inc  
Richard E Rooney, MBA '81  
Randy B M Royer, HBA '77  
S C Johnson & Son Ltd  
Paul Sabourin, MBA '80  
Kishore K Sakhrani, MBA '83  
Larry A Shaw, HBA '62  
Joseph C Shlesinger, MBA '86  
Maria & John Simpson, HBA '76  
Stelco Inc  
Carol M Stephenson  
Telus Mobility Inc  
The Toronto Stock Exchange  
Torys  
TransCanada PipeLines Ltd  
Eric C Tripp, MBA '83  
Kathleen & Bill Troost, MBA '75  
Serge Turko, MBA '87  
George B Turnbull, HBA '49  
Mr & Mrs F Peter von Muralt-Lo  
W Garfield Weston Foundation  
Warner-Lambert Canada Inc  
Gale & Bill White, MBA '69  
Wittington Investments Ltd  
Barbara & John F Wood, HBA '64

### \$50,000 to \$99,999

Anonymous  
Anonymous  
Anonymous  
3M Canada Company  
A T Kearney Ltd  
Wayne D Adlam, MBA '86  
Ian Aitken, HBA '87  
Alberta Performing Arts Stabilization Fund  
ArcelorMittal Dofasco Inc  
Donald Archibald, MBA '85  
Yvonne & Ross Archibald, HBA '58  
Paul J Atkinson, HBA '86  
Jean L & Walter R Badun, DBA '55, MBA '57  
Brett E B Barakett, HBA '88  
Deborah Barrett, HBA '80 & Jim Leech  
Bell Canada  
Bell-Northern Research Ltd  
Zena & John Besterd, HBA '78  
Bombardier Inc  
Thomas Bradley, MBA '83  
Dr Francesco Braga  
John Bragg  
Brent C Buckner, MBA '95  
Business Families Foundation  
Camco Inc  
Campbell Soup Company Ltd  
Canadian Airlines International Ltd  
Shody Chow, MBA '69  
Sylvia D Chrominska, HBA '75  
David W Cornhill, MBA '80  
Bea & Purdy Crawford  
Robert D Crockford, HBA '70  
Carolyn M H Cross, HBA '84  
Patrick G C Crowley, HBA '74

Richard J Currie  
DaimlerChrysler Canada Inc  
Don Darroch, HBA '73 & Sandy Wood  
Tim Dattels, HBA '80 & Kristine Johnson  
Gillian H Denham, HBA '83 &  
Stephen O Marshall  
Daniel A Devlin, HBA '81  
Alexandra & Camillo Di Prata, MBA '87  
Jeff Dossett, HBA '83 &  
Sue Dossett, MBA '84  
Kirsten J Feldman, MBA '84  
Barbara Fraser, HBA '71 &  
Ian Fraser, HBA '71  
Bruce R Gall, MBA '69  
Jim Gallagher, MBA '79  
General Atlantic Group Ltd  
Gerald Schwartz &  
Heather Reisman Foundation  
Goldman Sachs Group Inc  
Serge Gouin, HBA '65, MBA '66  
Janet C Griffin, MBA '88 & Jock W  
MacDonald, MBA '88  
R Keith Harfield, HBA '70  
Todd Hargarten, MBA '93 & Sarah  
Morgenstern, MBA '93  
Brian D Heald, MBA '85  
Lana M & Tim Hockey, EMBA '97  
David C Holmes, HBA '73  
Verna & Tom Howard, MBA '72  
Jim Hunter, MBA '76 &  
Heather Hunter, MBA '76  
Hydro One Employees &  
Pensioners Charity Trust  
Ian Ihnatowycz, MBA '82 & Marta Witer  
Imperial Oil Ltd  
John G Inch, HBA '91  
J D Irving Ltd  
Franklin G Jacobs, MBA '76  
C B Johnston Family  
Y L John Kao, HBA '76  
Edward J Kernaghan, HBA '65  
Knowlton Realty Ltd  
KPMG LLP  
Lan Kwai Fong Holdings Ltd  
Donald G Lang, HBA '80  
Robert W Luba, MBA '67  
Anne & Jay MacAulay, MBA '71  
Tim MacDonald, HBA '81, MBA '88  
Natalie MacLean, MBA '92 & Andrew  
Waitman, MBA '92  
Peter T Main, HBA '64  
Maple Leaf Capital LLP  
Chris R Matthews, MBA '72  
Jack H Matthews, MBA '83  
Craig P Mayor, HBA '73, MBA '76  
McCain Food Ltd  
Robert G McFarlane, MBA '85  
Ted Medland  
Michelle & Patrick Meneley, MBA '90  
Merrill Lynch Canada Inc  
Paul J D Miller, MBA '84  
Nortel Networks (Asia) Ltd  
Alexandra & Robert Nourse, MBA '64  
NUCRO-TECHNICS

Onex Corporation  
Osler Hoskin & Harcourt  
Gilles G G Ouellette, HBA '69, MBA '70  
Pierre Rivard, MBA '83 & Catherine Paquet  
RLG International  
Loretta & the Late Ted Rogers  
Harry & Evelyn Rosen  
Peter Samson, HBA '87 &  
Cathy Williamson, HBA '87  
Sears Canada Inc  
Michael C Shannon, MBA '83  
Peter Sharpe  
Douglas E Speers, MBA '70

### \$25,000 to \$49,999

Anonymous  
Anonymous  
Anonymous  
Anonymous  
Anonymous  
Anonymous  
Anonymous  
Anonymous  
John Akkerman, MBA '87  
Alumni Computer Group Ltd  
Amoco Canada Petroleum Company  
William D Anderson, HBA '72  
G F Kym Anthony, MBA '80  
David S Anyon, EMBA '97  
Avco Financial Services  
Bruce Barker  
Andrew W Barnicke, HBA '83  
Dr Paul W Beamish, HBA '76, PhD '85  
Jalynn H Bennett  
Michael Bernstein, MBA '96 & Nan  
Dasgupta, MBA '96  
Robert G Bertram  
James A Bertrand, MBA '83  
Blue Circle Cement  
Andre M Boysen, EMBA '99  
James Brodeur, MBA '62  
Charles W Brown, MBA '83  
Judy & Murray Bryant  
J Judd Buchanan, MBA '55  
Stewart C Burton, HBA '81  
Perry Caicco, MBA '83  
Cameron H Calder, HBA '53  
Paul F. Campbell, MBA '90  
Yolanda & David Campbell, HBA '93  
Canadian Information Processing Society  
Canadian Securities Institute  
Capital C  
Ronald D Charles, MBA '71  
W John Charman, MBA '70  
Wilson Choy, HBA '79, EMBA '01  
Clarica Life Insurance Co  
C David Clark, MBA '66  
C Greig Clark, HBA '74  
Ronald G Close, HBA '81  
Daniel R Coholan, MBA '87  
Coinamatic Inc  
Concordia Insurance Corp  
Connor Clark & Lunn Financial Group  
Counselling Foundation of Canada

## Ivey's Investors | Lifetime Giving

John D Crabb, HBA '66  
Mark L Cullen, MBA '71  
Kevin Dalton, HBA '90 &  
Kelley Dalton, HBA '90  
George S Dembroski, HBA '56  
Steve Dent, MBA '89 &  
Janet Maclaren, MBA '89  
Paul Derksen, HBA '75  
Paul G Desmarais  
Cynthia J Devine, HBA '87  
Navjeet Dhillon, EMBA '98  
Dino A DiCienzo, HBA '87  
Distacom  
David S C Dobell, MBA '89  
Economical Mutual Insurance Co  
Izzeldin A Elkhazin, HBA '71, MBA '72  
Endla & John Gilmour Foundation  
Epson Canada Ltd  
Equitable Life Insurance Company  
Exxon Energy Ltd  
Rhys T Eyton, HBA '58  
F W Woolworth Co Ltd  
Fleck Manufacturing Inc  
Steven Yaron Garmaise, MBA '83  
General Electric Canada Inc  
General Mills Canada Inc  
Alex E Graham, MBA '89  
Sheldon Greenspan, HBA '90  
Peter Grosskopf, HBA '87, MBA '90  
Edward J Gudaitis, MBA '93  
Gulf Canada Resources Ltd  
Doug Guzman, HBA '88 & Sheila Brown  
H J Heinz Company of Canada  
Jean & Ken Harrigan, HBA '51  
Daniel Hebert, MBA '81  
Donald C Hoffhine, MBA '74  
Hollinger Inc.  
Tony J Horak, MBA '75  
Horst E Hueniken, MBA '87  
Investors Group Inc  
Doug Irwin, MBA '81 &  
Margot Jones, MBA '82  
Terry A Jackson, MBA '73  
James Richardson & Sons Ltd  
William J Jandrisits, HBA '83, MBA '90  
Brian R Jones, MBA '74 &  
Karen L Weaver-Jones  
Brian W Jones, HBA '74  
James A Kalman, MBA '74  
Peter J Karrys, MBA '90  
Peter Kenny, MBA '57  
Richard L Knowles, HBA '73  
Marisa Kwok, HBA '77  
La Fondation De Gaspé Beaubien  
A Craig Lahmer, MBA '74  
Dr Douglas M Lambert, HBA '69, MBA '71  
Claude & Lorraine Lamoureux  
Fraser Latta, HBA '76  
Mark J Lewis, HBA '91  
Betty-Anne Lindsay, MBA '81 &  
Tom Lindsay, MBA '81  
Thomas & Rosemary Logan  
Terrence A Lyons, MBA '74

Don MacDonald  
W Allan MacEwen, HBA '76  
Macquarie Capital Markets Canada Ltd  
Christine A Magee, HBA '82  
Mainstreet Equities  
David L Mayhew, HBA '74  
Scott McCain  
Wallace McCain  
Rosemarie McClean  
McCormick Canada Inc  
Marion & Donald McDougall, MBA '61  
Raymond McFeeters  
Doug McGregor, HBA '79, MBA '82  
Tim McGuire, HBA '83  
Steven N S McMurray, HBA '80  
L Jacques Menard, O C, MBA '70  
Mersey Manufacturers Ltd  
Monitor Company  
Moore Corp Ltd  
Marti Morfitt, HBA '79 & Patrick Weber  
Hugh Morris, HBA '53  
Sean C V Mullin, HBA '84  
Wendy Murdock, MBA '82  
Nintendo of America Inc  
Noranda Inc  
Norcen Energy Resources Ltd  
Julie & Dr H B Brent Norton, MBA '89  
Nova Chemicals  
Andrea & Kevin O'Brien, HBA '93  
Oliver Wyman  
Robert Olsen, MBA '88  
Allan Olson, MBA '65  
Marion & the Late Earl Orser  
Nicholas W Paine, HBA '83  
J Bruce Pearson, MBA '58  
Neil & Leanne Petroff  
Paul K Pew, HBA '87  
Michael Phelps  
Ron A Plashkes, HBA '80  
Prudential Assurance Company  
Michael W Pun, HBA '89  
Robert S Rawlings, HBA '51  
Tasha & David Rawlings, HBA '96  
RBH Inc  
Douglas M Reid, HBA '58  
Rob Richards, MBA '70  
Robyn & Gordon Ritchie, MBA '77  
Russell C Robertson, HBA '69  
Lisanne & James C V Rogers, MBA '90  
Tevya G Rosenberg, HBA '73  
Bruce Rothney, MBA '89 &  
Lisa Rothney, HBA '85, MBA '89  
John A Rothschild, MBA '73  
RSM Richter Management  
Lawrie Savage, MBA '73  
Alan G Sellery, HBA '87  
C Richard Sharpe, HBA '50  
Heather Shaw, MBA '87  
Donald R Sheldon, MBA '69  
Sibson Consulting Group  
Curt Sigfstead, MBA '97 &  
Lara Witter, MBA '98  
Peter Simon, HBA '86

Alastair W Sloan, HBA '86  
Dr Ian A Sloan  
Andy & Helen Spriet  
Richard Stephenson, MBA '93  
Stephen A Suske, MBA '77  
Richard Talbot, HBA '86, MBA '91  
Lawrence Tanenbaum  
Karen J Taylor, MBA '92  
Ronald E Taylor, MBA '71  
Michael G Tevlin, HBA '81  
The Learning Company Inc  
Paul A Thomas, HBA '85  
Toppan Forms (HK) Ltd  
TorQuest Partners  
Mme & M Jean Turmel  
Wesley R Twiss, MBA '72  
Mary & Barry Ullett, HBA '75  
Vale Inco Ltd.  
Teresa & John Vander Hoeven, HBA '74  
Annette & Michael White, MBA '00  
Nancy & Andrew Wiswell, MBA '80  
Women in Capital Markets  
David T Wong, MBA '79  
Donald P Woodley, MBA '70  
Jessie & Larry Wynant, MBA '72  
Xerox (Hong Kong) Ltd  
Xerox Canada Inc  
Ray G Young, HBA '84  
Ming-Kong Yu, MBA '71  
Thomas R B Zeeb, HBA '86

## Ivey's Investors | Class Giving

### Class Giving

Class Giving is an outstanding example of the generosity and commitment of Ivey's alumni around the world, and the results of your collective contribution are significant.

### MBA Giving

#### MBA 1947

*Ivey Society, Benefactor*  
**Lawrence J Martello**

#### MBA 1948

*Ivey Society, Founders' Circle*  
**Gwen & the Late Ben Anders**

#### MBA 1950

**Moffat R Hill**

#### MBA 1952

Anonymous  
**Richard H Carr**

#### MBA 1953

**55th Reunion Social Committee:**  
**Gordon Osbaldeston**  
*Ivey Society, Benefactor*  
Fred & Donna Berlet  
*Other Annual Fund Contributions*  
Hon G Osbaldeston

#### MBA 1954

*Ivey Society, Deans' Circle*  
Lee Seng Wee  
*Other Annual Fund Contributions*  
**George Dorrance**  
Harold J Mandel

#### MBA 1955

*Ivey Society, Founders' Circle*  
J Judd Buchanan  
*Ivey Society, Patron*  
Donald A S Ivison  
*Other Annual Fund Contributions*  
J Camille Brouard  
Jack Curry  
Mohindar S Gill

#### MBA 1956

Leslie G Ham  
George Stuart

#### MBA 1957

*Ivey Society, Founders' Circle*  
Jean L & Walter R Badun  
*Ivey Society, Deans' Circle*  
**Peter Kenny**  
*Ivey Society, Benefactor*  
**Norman M Alexander**  
*Other Annual Fund Contributions*  
Anonymous  
Douglas S Allen  
**Andrew & Barbara Grindlay**

Barry Holt  
Guy H Laurin  
Professors Albert R & Vivian Wood

#### MBA 1958

**50th Reunion Social & Fundraising Committee:**  
**Bruce Pearson, David Walker**  
Total: \$103,339  
Participation: 51%

*Ivey Society, Founders' Circle*  
Bob Gair  
J Bruce Pearson  
**David J Walker**  
*Ivey Society, Deans' Circle*  
Alan C Lindsay  
*Ivey Society, Patron*  
Kenneth J Arthur

*Ivey Society, Benefactor*

#### Don Badke

Donald J A Cross  
**Leslie A Garvie**  
Edward M Kemp  
Donald B R Murphy  
Victor M Siroishka

*Other Annual Fund Contributions*

J David V Adams  
Robert L Borden  
J William Carver  
Brian P Drummond  
George W Fenwick  
James G Kirkland  
Thomas M Sterling  
William A West

#### MBA 1959

*Ivey Society, Deans' Circle*  
**Dr Michiel R Leenders**  
*Other Annual Fund Contributions*  
Peter W Bell  
Gilbert C Berringer  
**Casper Bloom**  
John L Bollen  
Garth E Giles  
**Donald H Mallory**  
G Galer F Robinson  
**John St C Ross**  
James P Streeter  
Jack T Wood

#### MBA 1960

Total: \$17,000  
Participation: 20%  
*Ivey Society, Founders' Circle*

#### W Keith Smith

*Other Annual Fund Contributions*  
Anonymous  
**John G Chamberland**  
Arthur N Grunder  
**Paul & Lynne McCrea**  
**John C Mustard**  
Vernon Nelson  
Len & Lynn Pakulak  
David Scott  
**Gregory L Stone**  
**John D Thompson**

#### MBA 1961

Total: \$81,204  
Participation: 18%

*Ivey Society, Founders' Circle*  
**William H Fuller**  
**Donald & Marion McDougall**  
*Ivey Society, Benefactor*  
**Dr & Mrs John A Humphrey**  
*Other Annual Fund Contributions*  
**Ralph C Addison**  
**Lawrence Burpee**  
Art Harrigan  
L Karl D Hinds  
**George W Lange**  
**Donald W Whitmore**

#### MBA 1962

Total: \$7,175  
Participation: 21%

*Ivey Society, Patron*  
**James Brodeur**  
*Ivey Society, Benefactor*  
Martin M Farnsworth  
**Miguel Fernandez**  
*Other Annual Fund Contributions*  
Anonymous  
Pierre Bergeron  
Andrew Billingsley  
Richard S Chaffe  
C Grant Davidson  
George S Day  
Hemendra P Desai  
**Thomas A Foulkes**  
Robert K Gibson  
Allan D Laird  
Gus Leach

#### MBA 1963

Total: \$41,969  
Participation: 17%

*Ivey Society, Founders' Circle*  
**Donald K Johnson**  
Paul R MacPherson  
*Ivey Society, Benefactor*  
William A Fast  
**David Tarr**  
*Other Annual Fund Contributions*  
Richard J Chase  
Cameron B Davreux  
John R Dick  
Nandlal Harsora  
Brian K Laxdal  
Bob McBurney  
Robert B McElhinney  
**Lawrence F Organ**  
George Schroeder  
Marg & Doug Weber

#### MBA 1964

Total: \$3,582  
Participation: 20%

*Ivey Society, Founders' Circle*  
Bruce H Reid

## Ivey's Investors | Class Giving

*Ivey Society, Benefactor*  
**Mr & Mrs David McCutcheon**  
*Other Annual Fund Contributions*

Anonymous  
Anonymous  
**Donald B Betts**  
**Robert C Bryce**  
William D Cochrane  
Donald B Creath  
Janet & Douglas Davis  
J A & D M Finlayson  
John A Houlden  
Bill & Doreen Magyar  
Michael C Schofield  
Blake J Sherman  
**J E (Bud) Tangney**  
Dr David T Wilson

**MBA 1965**  
Total: \$3,425  
Participation: 17%

*Ivey Society, Benefactor*  
**Dr Brian M Campbell**  
**Allan Olson**  
*Other Annual Fund Contributions*

Anonymous  
Francois R Bechard  
Graham S Boone  
John Buchanan  
**Cecil E Carsley**  
Sidney Horovitz  
George Kramer  
**Kevin R S Larkin**  
Reijo T Malmqvist  
**Joan E Nolting**  
**Dyrlin Redstone**  
Guy Tourillon

**MBA 1966**  
Total: \$38,645  
Participation: 9%

*Ivey Society, Founders' Circle*  
**Robert V Brouillard**  
**Nicole & Gilles Lamoureux**  
*Other Annual Fund Contributions*  
Burke Corbet  
**Fraser R Lindsay**  
David J W Rumpel  
Clair Shields  
Terry C Trecarten  
Jim Wyse

**MBA 1967**  
Total: \$9,050  
Participation: 11%

*Ivey Society, Deans' Circle*  
The Class of MBA '67  
*Ivey Society, Benefactor*  
**James A Erskine**  
*Other Annual Fund Contributions*  
Anonymous  
Marc Delisle  
Jerome Gendron  
Charles Golfman  
Douglas A Grant  
Ronald Haon

**Robert B Hasler**  
Norman Leach  
D Bruce Petrie

**MBA 1968**  
Total: \$45,360  
Participation: 14%

*Ivey Society, Founders' Circle*  
**Grant & Alice Burton**  
**Michael Needham**

*Ivey Society, Patron*  
**Lorne M Stone**  
*Ivey Society, Benefactor*

**Robert L Brooks**  
**Gordon Lackenbauer**  
John Mills  
Peter S Seybold  
*Other Annual Fund Contributions*

**Ronald J Beath**  
**Terrence L Bedard**  
Michel David  
**Kerin Lloyd**  
**Theodore B Metzger**  
Dr E F Peter Newson  
**Donald Walcot**  
Thomas S Warren

**MBA 1969**  
Total: \$22,300  
Participation: 8%

*Ivey Society, Founders' Circle*  
Paul & Carol Hill  
**Bill & Gale White**

*Other Annual Fund Contributions*  
**David W Betts**  
Dr Jacques Bourgeois  
**Gordon D Dick**  
Douglas A Gameroff  
Gordon Howell  
James N MacNeil  
Don Plewes  
D Glenn Stevens

**MBA 1970**  
Class Agent: Rob Richards  
Total: \$38,585  
Participation: 16%

*Ivey Society, Founders' Circle*  
**Gilles G G Ouellette**  
**Douglas E Speers**  
*Ivey Society, Patrons*  
**Donald P Woodley**

*Ivey Society, Benefactor*  
**Donald A Anderson**  
**Stephen R Brown**  
Bill Cameron  
**Rob Richards**  
Raymond J Verdon

*Other Annual Fund Contributions*  
Anonymous  
**Bob Campbell**  
David Dolman  
Gerald Fallon  
Gerald Goldenberg  
Ernest V W Greenwood

Douglas Hay  
**Gilbert R Mackie**  
**Lyall R McCurdy**  
G Christopher Phillips  
**George Ratner**  
Stanley Sanderson  
Michel G Suys  
Roderick Towle

**MBA 1971**  
Total: \$61,378  
Participation: 11%

*Ivey Society, Founders' Circle*  
Jay & Anne MacAulay

*Ivey Society, Deans' Circle*  
**Mark L Cullen**  
*Ivey Society, Benefactor*

**Phillip Gooch**  
**Bruce Graham**  
**Ronald E Taylor**  
*Other Annual Fund Contributions*  
Ian D M Brooker  
Thomas R Cochran  
**G Michael Hogan**  
**John & Carol Kittredge**  
Karl H Lubbe  
Doug McDougall  
Murray E Moss  
G Peter Oakes  
Stephen C Plumley  
Enn Tiislar  
**Stephenson Wheatley**

**MBA 1972**  
Total: \$56,310  
Participation: 17%

*Ivey Society, Founders' Circle*  
**Henry Cheng**  
**Arkadi Kuhlmann**  
**Pierre L Morrissette**  
*Ivey Society, Deans' Circle*  
**Chris R Matthews**

*Ivey Society, Benefactor*  
Lana & Gary Davis  
**Tom & Verna Howard**  
Rick Sterne  
**Wesley R Twiss**

*Other Annual Fund Contributions*  
Anonymous  
Daniel A Beaulieu  
Bruno L Borovskis  
G Ross Burkett  
William D Fletcher  
Marc G Fortier  
Gary Gorman  
William R Jenkins  
Gregory P Katchin  
**Jacques Lapare**  
David Minuk  
A David H Mitten  
Michael Pasztor  
Howard A Pate  
Francois Sauriol  
**R Scott Wilton**  
**Larry & Jessie Wynant**

## Ivey's Investors | Class Giving

### **MBA 1973**

35th Reunion Social Committee:  
James Cairncross, Trevor Holness, Adrian  
Horwood, Elliot Lifson, John Rothschild  
Total: \$29,685  
Participation: 10%

*Ivey Society, Founders' Circle*

Michael M Kanovsky

**Louis Lagassé**

*Ivey Society, Deans' Circle*

John A Rothschild

**Lawrie Savage**

*Ivey Society, Patron*

Anonymous

Family & Friends of the late Fred Metter

*Ivey Society, Benefactor*

**Roger N Cyr**

**Terry A Jackson**

*Other Annual Fund Contributions*

W A David Brittain

James B F Cripps

**Marshall R Egelnick**

Adrian Horwood

**Paul J Mirsky**

Dr Sherry L Price

Bob Schram

**Ian J Taylor**

Rigby Whitty

### **MBA 1974**

Total: \$59,074  
Participation: 14%

*Ivey Society, Deans' Circle*

**E Nicholas Gudewill**

*Ivey Society, Patron*

Anonymous

**Donald C Hoffhine**

**Bob Stuebing**

*Ivey Society, Benefactor*

**Hans C Jonckheere**

**Brian R Jones & Karen L Weaver-Jones**

David McNamara

Alan G Small

*Other Annual Fund Contributions*

Anonymous

Andrew Bland

James A Bull

**James S Coristine**

C Kenneth Crump

Luc Fagnan

J Duncan Gibson

Thomas S Gifford

Stewart D Gossen

**George W MacDonald**

**Denyse M Mackey**

Martin R Redwood

**Keith F Rose**

Robert G von der Porten

Louis Zanibbi

Robert H Zittler

### **MBA 1975**

Class Agent: Tony Horak  
Total: \$47,245  
Participation: 12%

*Ivey Society, Founders' Circle*

**C James Prier**

Kathleen & Bill Troost

*Ivey Society, Patrons*

**Tony J Horak**

**F Stuart Lazier**

*Ivey Society, Benefactor*

Robin Dow

Brian Phillips

Keith Smith

*Other Annual Fund Contributions*

Anonymous

**S Jim Bonny**

Stuart Campbell

**Wing S Chu**

**Gary Comerford**

Robert E Dearborn

Mark F Drexler

Thomas W Givens

Bruce Harvey

**Gord James**

Roger D Lace

**Robert A Martin**

James B Milway

Mark Sklar

**James J White**

### **MBA 1976**

Total: \$29,351  
Participation: 13%

*Ivey Society, Founders' Circle*

**Jim & Heather Hunter**

Franklin G Jacobs

*Ivey Society, Patron*

Michael M Boyd & Shelagh Donovan

*Ivey Society, Benefactor*

**John F Coombs**

Terrance W O'Grady

*Other Annual Fund Contributions*

Anonymous

Anonymous

John Fahrer

**Stephen B Holtzkener**

Douglas H Kuwahara

**Richard W Lancaster**

Rejean Landry

**Lesley Lemesurier Alboini**

**Christine C Lengvari**

Gerald Mazin

Paul D McKnight

**Gerald A McLeod**

William H McNeil

Verne Milot

David Munro

George C Reifel

Gerald Smeding

Paul Stevenson

**Penny Thomas**

Howard I Yaphe

### **MBA 1977**

Total: \$38,627  
Participation: 10%

*Ivey Society, Founders' Circle*

Jean-Louis Fontaine

### **Robert J Gorman**

*Ivey Society, Benefactor*

Ian D Bruce

Gregory Galardo

George B Russel

**Bruce M Shirreff**

**Donald & Pamela Steele**

*Other Annual Fund Contributions*

Richard Brown

**Lise Casgrain**

**Linda Chan**

Brian Evans

Ralph A Furness

James E Hunter

Stephen E Lockhart

Tony McCormack

Israel Mida

Len Shara

Mark St John

**Arthur H Watson**

### **MBA 1978**

30th Reunion Social Committee:  
Bill Brennan, David Cox,  
Ralph Downey, Richard Page  
Total: \$11,205  
Participation: 11%

*Ivey Society, Patron*

Anonymous

*Ivey Society, Benefactor*

**S Jeffrey Hertz**

John & Maggie Mitchell

Anil K Rastogi

*Other Annual Fund Contributions*

Anonymous

Anonymous

Deborah J Ambrose

Eleanor J Barker

Robert H Beriault

**Ron Farmer & Kathryn Stanley**

Chyanne D Fickes

Anna M Fiocco

**Don L Kester**

Ian & Barbara Lennox

**James Sabourin**

James E Smith

**Michael R Sprung**

Ms & Mr Tung

**Alex Turnbull**

### **MBA 1979**

Class Agent: Cam Turner  
Total: \$23,800  
Participation: 10%

*Ivey Society, Deans' Circle*

**David Kassie & Susan Harris**

*Ivey Society, Patron*

Stuart MacGregor

*Ivey Society, Benefactor*

Anonymous

Jim Gallagher

Gregory Guichon

**Ronald A M Lalonde**

**Michael P Mackasey**

Guy & Leslie Nelson

## Ivey's Investors | Class Giving

### **Cameron J Turner**

*Other Annual Fund Contributions*

#### **Thomas A Curley**

Ashley D'Silva

#### **Harry T Ethans**

Pierre L Lagueux

D Barry W Matheson

Robert E Mitchell

Marilyn Moore

Geoff Sinn

David Thomson

Eric Vengroff

### **MBA 1980**

Total: \$62,013

Participation: 15%

*Ivey Society, Founders' Circle*

#### **David W Cornhill**

#### **Kevin & Linda O'Leary**

#### **Paul Sabourin**

Andrew & Nancy Wiswell

*Ivey Society, Patrons*

#### **Jean-Pierre Colin**

Helen J Ziegler

*Ivey Society, Benefactor*

Mark Arthur

Randy Fretz

Donald F Lato

Maxine MacLure

#### **Nancy McInerney-Lacombe**

Dan Nixon

#### **G Brent Rusk**

Craig Shannon

Kevin & Jill Yousie

*Other Annual Fund Contributions*

James A Bertram

Dr R William P Blake

#### **William D Egan**

Michael N Fitzpatrick

#### **Richard Henson**

Aimo R Kuronen

#### **Brad H Lambert**

Jacques Lepage

Craig & Tina MacKinlay

Professor Betty McCamus

Scott Moulson

#### **Hugh C Ralph**

Halina Sandig

Mark Singh

#### **Kathryn Stanley & Ron Farmer**

#### **Maide Yazar**

### **MBA 1981**

Total: \$49,590

Participation: 16%

*Ivey Society, Founders' Circle*

#### **Richard E Rooney**

Laurance J Rosen

*Ivey Society, Deans' Circle*

Doug Irwin & Margot Jones

*Ivey Society, Patron*

Gerald I Asa

*Ivey Society, Benefactor*

Bernard Cormier

Katrina Gowdy Hele

### **Tom & Betty-Anne Lindsay**

#### **Lyle Kerr & Valerie Millen**

David McGraw

Karen L Spaulding

#### **Michael Weber**

*Other Annual Fund Contributions*

Anonymous

Anonymous

Jann Ashley

#### **Martin Braun**

David Browne

D Richard Dembicki

Gary Grundman

J Allen Hill

Michael L Langstaff

David G Luke

Gregory O Marlatt

Clifford B McCracken

Glen F Murphy

J Arthur K Rotherham

#### **J Anthony Seay**

Douglas Short

Kevin Smith

Robert D Snowdon

#### **Peter Spruce**

Ivy L Steinberg

David Tanner

Joanne Tanner King

#### **Alexander M Tye**

### **MBA 1982**

Total: \$60,098

Participation: 17%

*Ivey Society, Founders' Circle*

Susan Harris & David Kassie

#### **Ian Ilnatowycz & Marta Witer**

#### **Dipak Rastogi**

*Ivey Society, Deans' Circle*

Margot Jones & Doug Irwin

#### **Doug McGregor**

*Ivey Society, Benefactor*

Michael De Santis

David J Dulal-Whiteway

Mike Moroz

David F Mullen

#### **Wendy Murdock**

R Stephen Peacock

Michael A Thompson

*Other Annual Fund Contributions*

Anonymous

Anonymous

Anonymous

Anonymous

Larry Bacon

Charles C Baisden

David R Grant

#### **Beth Roemmele Hemstad**

#### **J David Hilborn**

Jeffrey G Hladun

Nasrullah F Jinnah

Gregory P Kowal

Aly Lalani

Marc J Lavoie

John D Leavitt

Maureen Long

Jacqueline Orange

Andrew & Bill Parkes

Prakash Pooran

Anton P Schlemm

#### **Amos Simpson**

John Stanczyk

Dr Gary Thompson

### **MBA 1983**

*25th Reunion Social Committee:*

Susan Abbott, Paul Ballinger, Carole Boivin,

Dave Boles, Peter Brennan, Lucy Brun,

Chris Chance, Jeannette Eberhard,

Steven Garmaise, Hiran Perera, Jeff Proudfoot

Sandra Safran, Jane Sedgwick,

Gary Svoboda, Christy Winder

*Fundraising Committee:*

Susan Abbott, Roger Dickhout, Steve McDonald

Total: \$542,950

Participation: 22%

*Ivey Society, Founders' Circle*

#### **Ronald Bresler**

#### **Geoffrey G Gudewill**

#### **Pierre Lapointe**

#### **Jack H Matthews**

#### **Steve McDonald**

#### **Pierre Rivard & Catherine Paquet**

Kishore K Sakhrani

Eric C Tripp

*Ivey Society, Deans' Circle*

Jeffrey Arsenych

Barbara J Kovacs

#### **Michael C Shannon**

*Ivey Society, Patron*

Anonymous

Paul Ballinger

James A Bertrand

*Ivey Society, Benefactor*

#### **Susan Abbott**

#### **Jeff & Deb Bacon**

#### **Bradley C Bourne**

#### **Charles W Brown**

#### **Perry Caicco**

#### **Roger & Janet Dickhout**

#### **Douglas J Harman**

Shane P O'Leary

Douglas Richmond

*Other Annual Fund Contributions*

Anonymous

Anonymous

Hany Assaad

#### **John R Beamish**

E Beange

#### **Ronald J Benes**

Carole A Boivin

Dr Leslie Bowd

Peter Brennan

Janet A Calder

Christopher Chance

Marion L Code

Laurie A Dunk

#### **Jeannette A Eberhard**

Steven Yaron Garmaise

Roland L Horst

#### **Tom Jesty**

Paul F Kirkpatrick

Louis Lamoureux

## Ivey's Investors | Class Giving

Matt Lawton  
Thealzel Lee  
**Chun P Ling**  
Patrick S-D Lu  
Catherine H Martin  
Lennox A Parkins  
**Alex A Pond**  
**Dr Catherine E Ralston**  
Jane Sedgwick  
Tony & Maureen Solecki  
Charles R Spina  
Gary K Svoboda  
Jay Switzer

**MBA 1984**  
Total: \$28,095  
Participation: 14%

*Ivey Society, Founders' Circle*

**C John Schumacher**

*Ivey Society, Deans' Circle*

**Jeff & Sue Dossett**

**Kirsten J Feldman**

*Ivey Society, Benefactor*

Dane A Chauvel  
Ken & Judy Fawcett

**Mark & Jan Herman**

Richard S Mazur

Stephen F Quinn

**Sandra Louise Rosch**

*Other Annual Fund Contributions*

Peter R Andrews

Robert D Annett

**Duncan E Campbell**

**J Wilbur Charles**

Sandra Diem

Bruce A Dumville

Martin E Granner

Robert Heinrichs

**Meegan J Hinds & Marc A Letourneau**

**Robert S Hyde**

Dr Andrew C Inkpen

**J Anne Lamont**

John D M MacDougall

**Tony Martin**

**Paul C McCabe**

Edward J McHugh

**Rosemary (Schauf) Pahl**

Scott Tapson

Henry & Ann Louise Vehovec

Peter J Waugh

Neville D Wilson

Robert Yanowski

Andrew C Zsolt

**MBA 1985**  
Total: \$12,010  
Participation: 14%

*Ivey Society, Benefactor*

Anonymous

**Susanne & Doug Berk**

James R Charlton

Donald J Polk

Marita E Zaffiro

*Other Annual Fund Contributions*

Anonymous

David Aston  
Jean-Marie Brideau  
Lloyd P Cooper  
**Claude F Damiani**  
**David Fine**  
**Joan E Fiset**  
Lora Z Goldberg  
**C Anne Hale**  
Peter W Ingle  
Gordon & Beverly Knapp  
Eric C L Lee  
J Douglas Mahon  
J Anthony Manastersky  
Nancy & Manlio P Marescotti  
Donald T Maunders  
**Robert G McFarlane**  
Michael G Reed  
Andrew H Ringvee  
Robert Solomon  
**Thomas J Trainor**  
**George A Trusler**  
David R Weiner

**MBA 1986**  
Total: \$59,950  
Participation: 13%

*Ivey Society, Founders' Circle*

**E Scott Beattie**

**Joseph C Shlesinger**

*Ivey Society, Deans' Circle*

**Wayne D Adlam**

**Jacques Nolin**

*Ivey Society, Benefactor*

Thomas J Clulow

**Barbara L Lawson**

Michael Marfoggia

*Other Annual Fund Contributions*

Anonymous

Anonymous

Andrew Aleong

Jim Arsenych

**David Boyce**

C David Johnston

Peter Eaton

Ann Elliott

David Ferguson

Thomas S Hare

**Thomas G Hinton**

**Bruce Lindsay**

**Jim McKay**

Allister C Paterson

**Peter K Ross**

David J Smith

William N Spencer

Paul W Szczucinski

Brian L Thompson

**MBA 1987**  
Total: \$98,862  
Participation: 21%

*Ivey Society, Founders' Circle*

Anonymous

Camillo & Alexandra Di Prata

**Heather Shaw**

*Ivey Society, Deans' Circle*

Anonymous

John Akkerman

**Daniel R Coholan**

Horst E Hueniken

Rob Logan

*Ivey Society, Patron*

Anonymous

Filip Papich

*Ivey Society, Benefactor*

Anonymous

Grant S Berry

Robert W Gibson

Michael L Kline

Martin H Loken

**Valerie Millen & Lyle Kerr**

Dan O'Byrne

Gordon Pearce

Carmen M Piche

Genaro Rodriguez

Michael M Sheahan

Alka Sood

**Jill Vandal**

Ann E Watson

*Other Annual Fund Contributions*

Anonymous

Anonymous

Anonymous

Anonymous

David J M Barry

Gerry T Fenwick

Dominique Gerin-Lajoie

Michael Heale

Stephen Kaufman

**Peter J Macaulay**

Dr Brent Matthew

James D Pratt

Jeremy Roberts

Dr D Sandfield Staples

Chi Tong

Harry J Verlaan

**MBA 1988**  
20th Reunion Social & Fundraising Committee:  
Thomas Bauer, Jane Broderick, Cathy Buchanan,  
Graham Carter, Ray Digby, Paul Fisher,  
Steven Galezowski, Janet Griffin, Tim Hodgson,  
Jeff Kinsella, John Lafontaine, Don MacDougall,  
Charles MacQuarrie, Rob Olsen, Heather Rider,  
James Saunders, Susan Schaefer,  
Harry Taylor, Stephen Walsh  
Total: \$268,340  
Participation: 13%

*Ivey Society, Founders' Circle*

Janet C Griffin & Jock W MacDonald

**Timothy Hodgson & Linda Netten**

Tim MacDonald

*Ivey Society, Deans' Circle*

S Jane Broderick

Robert Olsen

*Ivey Society, Patron*

**David Montanera**

*Ivey Society, Benefactor*

Graham Carter

**Don MacDougall**

## Ivey's Investors | Class Giving

### **Charles A MacQuarrie**

Josephine Marcellin  
David S Simpson

#### *Other Annual Fund Contributions*

Anonymous  
Gregory Barron  
Akhil Bhandari

### **Michael A Bolitho**

Cathy M Buchanan

### **Kevin H Campbell**

Bob M Chown

### **Christopher J Connolly**

Martin Fafard & Angela Olsen  
Steven S Galezowski

Jonathan L Latsky

James R McGill

### **Diane Moldaver**

Robert J Mustard  
Christianne Paris  
Heather Rider

Mary M Robertson

Laura Rosenthal

John H Swettenham

### **Peter Szoke**

Atul Thakrar  
Gregory B Turchyn  
Gregory P Vitali

### **MBA 1989**

*Class Agent: Laurie Campbell*

*Total: \$39,025*

*Participation: 17%*

#### *Ivey Society, Founders' Circle*

### **Laurie G Campbell**

Steve Dent & Janet MacIaren

#### *Ivey Society, Patron*

Alex E Graham

### **William Quinn**

#### *Ivey Society, Benefactor*

Geoffrey S C Cann

Michael J Greenberg

Howard N Lis

#### *Other Annual Fund Contributions*

Anonymous

### **Dr Neil A R Abramson**

Joshua B Albert

### **Robert Blais**

Ted A Bonertz

BGen Linda J Colwell

Ian R Cullwick

Pierre L Desjardins

### **Richard H Dobson**

Louis Draper & Cynthia McLean

Sheila Duncan

Robert Durfy

Michael J Ewald

### **Anastasios Georgiou**

### **Nicole C Goodfellow**

### **G Thompson C Hickey**

Margot C Howard

### **Bill Killeen**

### **Robert Lajoie**

Ian K Macdonell

### **Gadi Meir**

### **Jeffrey G Miller**

Angela Olsen & Martin Fafard

Glen G Orsak & Margo E Hoyt

Pierre Pichette

Kurt M Ritcey

K Russell Robson

### **A Jeffrey Schieck**

### **Douglas Stirling**

Carol M Trattner

John Welton

### **MBA 1990**

*Total: \$20,418*

*Participation: 11%*

#### *Ivey Society, Founders' Circle*

### **Patrick & Michelle Meneley**

#### *Ivey Society, Deans' Circle*

### **William J Jandrisits**

#### *Ivey Society, Benefactor*

### **Paul F Campbell**

### **Paul St Michel**

#### *Other Annual Fund Contributions*

Anonymous

Anonymous

F Andrew Forestell

Lynn C Gregor

### **Bernard L Gutnick**

### **Leo J & Susan M Hall**

Lise-Ann Hughes

Don Johnson

### **Timothy D Keighley**

Cam Lewis

R Greg McKnight

### **John McMillan**

Paul B Noreau

Marian G Plante

Randolph B Richardson

Lisanne & Jim Rogers

Jill M Roussy

Kristian T Teleki

### **Donna E Thompson**

### **MBA 1991**

*Total: \$14,846*

*Participation: 12%*

#### *Ivey Society, Patron*

Gareth N Turner

#### *Ivey Society, Benefactor*

Mark E Newman

Richard Talbot

### **Mike Thorfinnson**

### **Mark Whitmore**

### **Sandy Whittall**

#### *Other Annual Fund Contributions*

Anonymous

Anonymous

Steve Adams

Hussain Ali-Khan

Juliet Atha

Peter M Ballon

David Cassie

### **Ross H Chafe**

### **Linda A Crawford**

Philip Eisler

### **Rhonda L English**

### **Colleen Gordon**

Elaine R Kelly

### **Ann E Lumsden**

Carl MacArthur

Brad Maheu

Howard Mains

John McCready

Karen A & David I McKay

Douglas W Melville

James C Morgan

Ronald P Reinders

Amos Tin

Francois Turmel

Jeff Weiss

### **MBA 1992**

*Class Agent: Heather Kitchen*

*Total: \$52,540*

*Participation: 19%*

#### *Ivey Society, Founders' Circle*

### **ERA Foundation**

#### *Ivey Society, Deans' Circle*

Anonymous

### **Boris Novansky**

Barry W Stewart

### **Karen J Taylor**

#### *Ivey Society, Patron*

Douglas W Ogilvy

#### *Ivey Society, Benefactor*

Alicia & Tony Cestra

James A D'Orazio

### **Stephen J A Fagan & Deborah A Chow-Fagan**

### **Chris Hibberd**

Bill Jack

### **Dr P Fraser Johnson**

Steven D Kostyshen

Steve & Judy Meston

Joseph Nemeth

Gary Sobel

Margot E Thom

### **Terry Tuharsky**

#### *Other Annual Fund Contributions*

Anonymous

Douglas A Barry

Gordon Cameron

Mark Clancy

Kathryn Cronin (Montgomery)

Rob Cunningham

Richard Dufresne

### **Michael F Hill**

Kevin L James

Garry McCarron

David I & Karen A McKay

Patricia M Meehan

Jeff Munroe

Hugh Owen

Sylvain Pelletier

Cathy L Pin

Michael C Rodgers

### **John T Samuel**

George Staikos

Tony Valle

P Andrew Waight

David Welsh



## Ivey's Investors | Class Giving

### **MBA 1993**

15th Reunion Social Committee:  
Hillary Cassady, Laurel Deplaedt,  
Gayle Duncan, Sherry Holenski, Bill Tam

Fundraising Committee:  
Brian D'Costa, Chris Donald, David Dundas,  
Todd Hargarten, Andy Herrmann, Margo Hoyt,  
Darren Marshall, Sarah Morgenstern,  
Robert Pemberton, Richard Stephenson

Total: \$128,576  
Participation: 16%

*Ivey Society, Founders' Circle*

Anonymous

Edward J Gudaitis

*Ivey Society, Deans' Circle*

**Sarah Morgenstern & Todd Hargarten**

*Ivey Society, Patron*

Anonymous

*Ivey Society, Benefactor*

Anonymous

Katharine H Ashworth

**Peter A Charton**

Michael G Clements

**Kim M P Cook**

**Brian D'Costa**

Barry W Dennis

J Christopher Donald

**David Dundas**

**G Keith Graham**

Darren R Marshall

**Lani C Martin**

**Loron R Orris**

Steve Phillips

**Richard Stephenson**

Grant S Winton

*Other Annual Fund Contributions*

Anonymous

Erle K G Anderson

**Richard M Blaiklock**

**Michel Bruyere**

**Dan & Karen Condon**

**Carol Cruickshank & Jim Lisser**

**Laurel Deplaedt & Paul Blaha**

Nick Evans

Greg Fitzgerald

**Andrew W Herrmann**

Carey & Scott Houston

**Margo E Hoyt & Glen G Orsak**

**Martha L Ivester**

**Kathy Kalafatides Ferrisey**

David L Karp

Colleen A Keane

Mark E Klajman

**Martin McCambridge**

Patrick McFetridge

**Jeff Meyer**

**Robert T Pemberton**

Walter Romaniuk

John Sawler

Michael H Schatz

**John A Sinclair**

Daniel M Steinberg

**Christopher Stevens**

Peter Tagliamonte

Dennis Tze

### **MBA 1994**

Class Agent: Sergei Tchetyrnykh  
Total: \$17,951  
Participation: 17%

*Ivey Society, Patron*

William Pang

*Ivey Society, Benefactor*

Anonymous

Anonymous

**Andrew J Abbott**

W Mark Barber

Dave & Nancy Chapman

**Sergei & Olga Tchetyrnykh**

**Chet C Woon**

*Other Annual Fund Contributions*

Anonymous

Amir G Bassiri

**Karen E Board**

**Margot Burleton**

**Martin P Catellier**

**Amitabh Chaudhary**

**Clare W Cheng**

Narinder S Dehal

D J Lindsay Dodd

Luc J Fouquette

**Keith R Graham**

Derek Ham

Terry L Holt

Doug Jamieson

Deepak Khandelwal

John C Koyanagi

**David Kusnierczyk**

**Stephen E Kuwahara**

**S T Michael Lau**

Ken E Lim

Andrea (Dent) Lombard

James E Lorimer

Priscilla Ma

Anthony L Mar

Gregory Martin

**Brian J Pearson**

**David B Pitfield**

**T John Rideout**

David Roberts

Juliane M Schaible

Martha & Dirk Schrader

Peter Strickland

**Steve Suarez**

Anna Supera Kuc

Bryan C Tatoff

### **MBA 1995**

Total: \$7,335  
Participation: 11%

*Ivey Society, Benefactor*

Alexandra B Nick

**Joseph D Quarin**

**Bradley A Radin**

Maurice Smith

*Other Annual Fund Contributions*

Anonymous

Anonymous

Jean-Paul U Desrochers

Monique M French

Laurence M Goldstein

Dean Herback

Vikram Karvat

Jay P Larock

Hilda H Lau

Gary Nevison

**Athena A Pasqualoni**

Ronny Steinberg

Matthew D Turner

Christopher Yoshida

### **MBA 1996**

Class Agent: Jonathan Black, James Vogtle

Total: \$100,840

Participation: 14%

*Ivey Society, Founders' Circle*

**Mark Wellings**

*Ivey Society, Deans' Circle*

**Michael Bernstein & Nan Dasgupta**

*Ivey Society, Benefactor*

Dina E Chernoff

Daniel S Golberg

Stephen H E Murphy

**Boyd R Pederson**

*Other Annual Fund Contributions*

Anonymous

Anonymous

Anonymous

Anonymous

Jonathan & Patti Black

Susan Brooke

Jonathan G Ehrlich

Lynda M Guile

Scott Hledin

Mark Kopytek

Patricia MacPherson & Paul Fleming

David J Mallette

Greg McLean

Matthew F McQuillen

Gail Rodwell-Simon

Gawain S E Smart

Stewart Steeves

Brian Tafler

### **MBA 1997**

Class Agent: Steve Dumanski

Total: \$38,750

Participation: 19%

*Ivey Society, Founders' Circle*

Philip F D Moorcroft

**Anthony & Victoria Ostler**

*Ivey Society, Deans' Circle*

Curt Sigfstead & Lara Witter

*Ivey Society, Benefactor*

**Hugh D Babowal**

**Steve & Lesa Dumanski**

**David J Pennington**

Tak Yu Trevor Tam

Joel Thompson & Sylvie Weeks

*Other Annual Fund Contributions*

Anonymous

Anonymous

Anonymous

Anonymous

**Anthony Anderson**

**Mark D Applebaum**

## Ivey's Investors | Class Giving

Roger Berthelot  
James A Black  
Dugald Campbell  
Roman J Chomyn  
Don Chung  
**Geoffrey G Colter**  
**Costas Constantakis**  
Andree Dallaire  
Scott McRorie  
Ian S Orfanides  
Karen M Peesker (Boehnke)  
Thomas G Philpott  
Mike Smerdon  
Jason Steinberg  
Eric E Strong  
Michael & Angela Switt  
Bruce W Watson  
**Michael Woolhouse**

**MBA 1998**  
10th Reunion Social Committee:  
Tim Benson, Sally Brady, Tim Logie, Jerry White  
Fundraising Committee:  
Tim Benson, Carolyn Dennis, Tim Logie  
Jerry White  
Total: \$54,234  
Participation: 21%

*Ivey Society, Deans' Circle*  
Curt Sigfstead & Lara K Witter

*Ivey Society, Benefactor*  
Anonymous  
John Berry  
Stephen Bertrand  
Charles A Gadalla  
Kurt Middleton  
John Shannon

**Erin & Jan Sorhaug**  
Richard Wozniak

*Other Annual Fund Contributions*  
Anonymous  
Simon Adell  
Tim Benson & Suzanne Spragge  
James Beresford

**Sean Cameron**  
Alison & Scott Cooper  
**Carolyn S Dennis**  
**Marie-Anne Desjardins**

Sergei Dombrovski  
Anthony Ferrari  
Neil FitzGerald

**Brett V Flint**  
Andrew R P Grimes  
Beau Hatcher  
Darryl M Jacobson  
Pyarali Jamal  
Allison J Kim

**Antoni A Krajewski**  
Rosemary R Lavoie  
Elizabeth Lazarou

**Tim D Logie**  
**Hugh McKeel**  
Chantal Miklosi  
Kevin Oerton  
Carlos A Ortega  
William D Robertson  
**Andrew Romocki**

**Tal Vilenski**  
Helen Wang  
**Glen Webster**  
**Jerrold White**  
**Steven Wilson**  
James R Witmer  
Michael N Zienchuk

**MBA 1999**  
Class Agent: Timothy Grigg, Darren Rough  
Total: \$7,514  
Participation: 10%

*Ivey Society, Benefactor*  
Anonymous  
Michael Flood  
Mark Lerohl  
Shon Wilkie

*Other Annual Fund Contributions*  
Anonymous  
Anonymous  
Jannalee I Anderson

**Doug Duimering**

David Eason  
Andrew Fletcher  
Jay Flye  
Winnie Fong  
Clifford Hui  
William Jin  
Mike MacMillan  
Peter Manning  
Todd H Owen  
Gordon V Sandford  
Jeem Sirivar  
Peter J G Smith

**Andre Sochaniwsky**  
Grant Yee

**MBA 2000**  
Class Agent: Allan Carl Buitendag, Marc Faucher  
Total: \$49,611  
Participation: 24%

*Ivey Society, Founders' Circle*  
**Michael & Annette White**

*Other Annual Fund Contributions*  
Anonymous  
Anonymous  
Anonymous  
Anonymous  
Anonymous  
Anonymous  
Anonymous  
Anonymous

Dr Bogdan Alexandrescu  
Dominic James Atkinson

**Shakeel Bharmal**  
**Allan Carl Buitendag**

Benoit Cantin  
Krystian L Cieplucha  
Amanda L Clark  
Andy Crysedale  
Scott Davies  
Michael J Dilworth  
Marc Faucher  
Derek Flood & Michelle Lalonde  
Gord Frost & Heather McKay

**Jeffrey Groves**  
Wei Guo  
April Tsu Tsuen Huang

Greg Kudar  
Tara Landes  
David & Marla Larock (Copeland)  
Justine Lear Hamilton  
Gerald Lei  
Hong Liu  
Richard Lowes  
David Markanich  
James J McHale  
Roma Minenko  
Cameron C Mitchell

**Patrick R Mitchell**  
Neeraj Monga  
**Steven T Nevard**  
Simon Parmar  
Christine Leanne Rigby

**Krista Saleh**  
Jennifer Samarzija  
Wenhua L Sheng  
Brian J Sinclair  
Athena A Skagous  
**Scott S Spencer**  
Geoffrey P Wright  
John Yen  
Chengduo Yu

**MBA 2001**  
Class Agent: Anna Rea  
Total: \$13,056  
Participation: 17%

*Ivey Society, Benefactor*  
Colin Edwards  
Frederic Lesage & Anne McMaster  
Kevin S Williams

*Ivey Society, The First Decade Society*  
Craig McKean  
Mark A Roberts

*Other Annual Fund Contributions*  
Anonymous  
Anonymous  
Anonymous  
Anonymous  
Gabriel Arce  
Sandra H Bolton  
Peter W J Busse  
Kin Yung Chan  
Hui Cong

**Xinyi Gu & Tingjie Zhang**

Hongjian Han  
Chun-Lei Hao  
Kemei He  
Melissa Holland  
Wenbo Huang  
Alain R Huneault  
Ellen R Jarmain  
Jianhua Ju

**Marc H Kaipio**  
Peter Kalen  
Peter M Klosch  
Ang Li  
Bin Christine Li  
Yuejun Li  
Ben Lu  
Karine MacIndoe  
Song Meng  
**Peter R Neufeld**

## Ivey's Investors | Class Giving

Andrew Pettit  
Paula J Puddy  
Don Qiu  
**Janine White**  
Eric Xiong  
Don Xu  
Gang Yang  
Peng Zhao

### **MBA 2002**

*Class Agent: Robyn Hochglaube*  
Total: \$16,138  
Participation: 22%

*Ivey Society, Benefactor*

J Mark Cameron  
Adam Cooper  
Gerard Gagnier  
Dilprit Grewal  
Alan Marr  
Robert & Sharon Staffen

*Ivey Society, The First Decade Society*

Anonymous

### **Jean-Pierre Boudrias**

Tao Chen  
John Foufas  
James Kao  
Michael Quinn  
Xiao M Shen  
Xuejun Zhen

*Other Annual Fund Contributions*

Anonymous  
Todd Armstrong  
Kui Cai  
Yun R Chen  
Zhi S Chen  
Sebastian Choquette  
Martin Cote  
Hua Dai  
Jennifer E Fraser  
Xiaohong Gu  
Mary A Heisz  
Mustafa Husain  
Xinping (Catherine) Jian  
John Khajadourian  
Arpad Komjathy  
Maohua L Li  
Yong Neng Li  
Yong C Liu  
Jason R Livingstone  
Lin Lu  
Ling Lu  
Robert MacEwen  
Xin Mei & Haiyi C Liu  
Rob Peterman  
Jason Phillips & Julie Hill-Phillips  
Geoffrey A Pollock

### **Jie J Qi**

David B Shepard  
Jeff Smith  
Gapun Yi Jun Tang  
Hailin F Tang  
Ying Y Wan  
Xin Wang  
Hai Qing Wang  
Michael H Wang

Xin Wang  
Catherine Wei  
Peng Xie  
Qin Yan  
Sanzhong Yang  
Tong Yin  
Feng Yu  
Wencui Yu  
Zhijie Zhang  
Hongmei Zhou  
Lin Zhu

### **MBA 2003**

*5th Reunion Social Committee:*  
Rebecca Anas, Spencer Low, Jessica Shi  
*Fundraising Committee:*  
Raj Aggarwal, Bogdan Comanita, Leonard Firkus,  
Rob Jaques, Dev Srinivasan. Paul Szabunio  
Bryce Tigert  
Total: \$18,079  
Participation: 13%

*Ivey Society, Benefactor*

Bogdan Comanita

### **Brian Huen**

*Ivey Society, The First Decade Society*

Wah-Kit Cho  
Dale Degner  
Leonard Firkus  
Hratch Manavian

### **Peter Sang Ng**

**Eliza C O'Neil**  
Gurdip Sanghera

*Other Annual Fund Contributions*

Anonymous  
Anonymous  
Anonymous  
Anonymous  
Anonymous  
Raj Aggarwal  
Rebecca Anas  
Brian Balkwill  
**Michael Berkson**  
Jacqueline Newell Chapman  
Dinesh Chaudhari  
Jason Christie  
Lan Ding  
Sonal N Doshi  
Kathryn Engle  
Colin Goring  
Jaya Hiutin  
Jun Hu  
Krishan Khanna  
Richard Kuo  
Nicholas Lagopoulos  
Heidi Li  
Hui Li  
Bing Lin  
Spencer Low  
Alex Ma  
Li (Mary) Ma  
James MacDonald  
Jonathan McDooling  
Anique C M Montrichard  
Benjamin R Rodney  
Elan Satov  
Sing Huen So

David Song  
Dev Srinivasan  
Victoria J Sweeney  
**Paul A Szabunio**  
Pearl Tam  
Garrett Taylor  
John Wen  
Bobby Zhang  
Hui Zhao  
Lisa Zhao  
Jerri Zheng

### **MBA 2004**

Total: \$8,762  
Participation: 12%

*Ivey Society, Benefactor*

Daniel Barnholden  
Joseph J Lo

*Ivey Society, The First Decade Society*

Anonymous  
Larissa Chaikowsky  
Kamal Gautam  
Adam Posman

*Other Annual Fund Contributions*

Anonymous  
Anonymous  
Anonymous  
Anonymous  
Stefan P Bortolussi  
Ashish Chaturvedi  
Zhongjie Chen  
Sarah Cullen  
Rishi Gautam  
Rayomand Golwala  
Yan Guan  
Farah Hosein  
Clara Hu  
Jianghao Hu  
Dabei (David) Jiang  
Lixin Liu  
Chris Lumley  
Lee Merovitz  
Vincent Ng  
Yong Pu  
Fang Qin  
Steven Ridgeway  
Richard Robarts  
Jiazhen Shen  
Matthew Simpson  
Ning Sun  
Hilary Thompson  
Jeffrey Wood  
Jian Xu  
**Jimmy Yeung**  
Yang Jun Zhang  
Yi Zhang  
Lihong (Linda) Zhou

### **MBA 2005**

*Class Agents: Lisa Cleary, Dan Rowe*  
Total: \$11,554  
Participation: 23%

*Ivey Society, The First Decade Society*

Anonymous  
Anonymous

## Ivey's Investors | Class Giving

Lisa Cleary  
Mark Healy  
Jeffrey Hicks  
Michael Kennedy  
Robert Levine  
Mike McKenna  
David Sloane

### *Other Annual Fund Contributions*

Anonymous  
Anonymous  
Anonymous  
Anonymous  
Jared Bettridge  
Samuel Blaichman  
Alexander Bond  
Mike Brydson  
Jasper Chan  
Paul S Chapman  
Scott Charlton  
Jian (John) Chen  
Jun Cheng  
Kyle Chow  
Prakash David  
Adam Dean  
Graham Eisenhauer  
Pablo Fernandez Marchi  
Richard Fortnum  
Mitchell Gilbert  
Ying Guo  
Matthew Hall  
Dylan & Lora Hardy  
Gregory Harris  
Helios He  
Jason Heayn  
Changhai Jia  
River Jiang  
Jackie Kwong Leung  
Jialu Li  
Yongsheng Li  
Shi (Collin) Liu  
Dong (Paul) Lu  
Murray Lynn  
Sean Maniaci  
Luis Mesia  
Christian Milbourne  
**Colin Moore**  
Catherine Naylen  
Yeshwant Paul  
Marc Pavlopoulos  
Ramin Roohi  
**Daniel Rowe**  
Wei Sha  
Robert Jurgen Skringer  
Xiaochuan Tang  
Stephanie Taylor  
Wendy Taylor (Stolk)  
Sharon Telem  
Joe Thacker  
Agata Urbanowicz  
Gregory Worsnop  
Golnaz Yekrangian

### **MBA 2006**

*Class Agents: Clare Aker*  
Total: \$5,488  
Participation: 17%

### *Ivey Society, The First Decade Society*

Anonymous  
Anonymous  
Sunil & Alpa Adalja  
Ryan Gardiner  
Jeff Leung  
Christie Love  
Eleni Mitsis  
**James Obrigt**  
Shane O'Farrell  
Rahul Paul  
Tomasz Pawelkiewicz  
Matt Pittman  
Bas Van Berkel  
Jianwei Wang  
Lisa Wiens

### *Other Annual Fund Contributions*

Anonymous  
Anonymous  
Anonymous  
David Bassin  
Xijun Cheng  
Yong Gao  
Xiuyuan Guo  
Min He  
Ning Huang  
Gary Jia  
Alfred Zhen Li  
Delia QiaoDi Pan  
Jun Peng  
David Science  
Saurav Singhal  
Andy (Yinghua) Sun  
Wenpeng Zhao  
Shi Ding Zheng  
Rebecca Zhou  
Vincent Zhou

### **MBA 2007**

Total: \$7,732  
Participation: 12%

### *Ivey Society, The First Decade Society*

Anonymous  
Anonymous  
Anonymous  
Anonymous  
Jean-Francois Allain  
Andrew Alley  
Frank Callele  
Adeline Cheng  
Gina Chong  
Hank Gao  
James Graham  
L Hoo  
Brent Hutzal  
Zahra S Khilji  
Michael Liebrock  
Marissa Liu-Glaister  
Nigel S McNabb  
Mumo Musembi  
Colin Paddington  
Mira Ray  
Jonathan Paul Saunders  
Josh Silvertown & Ilana Valo  
Darwin Smith  
Peter Sobczak

John Qiang Tu  
Mark Turner  
Vijay Viswanathan  
Daniel Whang  
Lorraine Wong  
Yan Xu  
Wen Xue  
Rainer Zhu

### *Other Annual Fund Contributions*

Karanjit S Bhugra  
Bin Li  
Raymond Liu  
Zhi Lu  
Jun Ma  
Julia (Yanling) Zhang  
Ji Zhou

### **MBA 2006**

*Class Agents: Anuj Chandarana, Irfan Daya, Trevor Hand, Lyndsay Passmore*

Total: \$8,801  
Participation: 31%

### *Ivey Society, Benefactor*

Ryan Kalt

### *Ivey Society, The First Decade Society*

Sandro Banerjee  
Reyer J Barel  
Babak Barkhodaie  
Colin Bendell  
Wendy Chan  
Anuj Chandarana  
Nina Chandarana  
Vinay Chopra  
Lindsay Cross  
Robert Dimitrieff  
Lauren Fleming  
Eunice Fung  
Sukanthini Gajendra  
Amy (Daw) Gibbons  
Hanz Gin  
Trevor R Hand  
Mariam Hashmi  
Sarah Helppi  
Shawn Howarth  
Yayin Hu  
Eric Kung  
Nick J Kuzyk  
Michael Lazarovits  
Christopher Lerch  
Jean-Francois Letarte  
Linda Liem  
Xiaolin Liu  
Richard Logan  
Jagrit Marriya  
Susy Martins  
Stephen Mathew  
Aaron Minocha  
Jennifer Mitchell  
Lyndsey C Morningstar  
George N Nikopoulos  
Sharad Ojha  
Doug Parent  
Lyndsay Passmore  
Scott Robertson  
Miriam Rybalov  
Kristen Sam

## Ivey's Investors | Class Giving

Mark Schneider  
Yingyu (Grace) Shi  
Stephen Stewart  
Fatima Surani  
Randy M Tupaz  
Uma Venkataramaiah  
Matthew Wiper  
Kyla Woodcock

### EMBA Giving

#### EMBA 1993

*Ivey Society, Benefactor*  
Tom Greco  
*Other Annual Fund Contributions*  
Charlotte S Ip

#### EMBA 1994

Janet E Heisey  
Gary A Krikler

#### EMBA 1997

*Ivey Society, Founders' Circle*  
**Tim Hockey & Lana M Hockey**  
*Ivey Society, Deans' Circle*  
David S Anyon  
*Ivey Society, Benefactor*  
Claire D Duboc  
**David C Edwards**  
Paul A Lamothe  
*Other Annual Fund Contributions*  
Peter Inman  
Paul C Lott

#### EMBA 1998

David J Burns  
Derek W Gould  
Peter J MacGillivray

#### EMBA 1999

Anonymous  
Gordon Albini  
Paige Aniballi  
Dr Yehiel Meghory  
W Cameron Moffatt

#### EMBA 2000

*Ivey Society, Founders' Circle*  
**Daniel Lam**  
*Other Annual Fund Contributions*  
Carmen E Harvey  
Kayvon Khalili  
Perry P Lea  
**Patricia S T Ling & Chun P Ling**  
Agako Nouch  
Cindy Reid  
Frank Sartor

#### EMBA 2001

Henry Friesen  
Peter Hlavnicka  
Mark J Longo  
Bernardino Salvatore  
Wendy K Wong

#### EMBA 2002

Winston Chong  
Tyrone Davids  
James Halliday  
Richard Hedges  
Mary Lou Hukezalie  
Harvey Naglie  
Richard Wah Kan  
Zhongze Wang

#### EMBA 2003

*5th Reunion Social Committee:*  
**Trevor Levine**  
Anonymous  
David Marshall  
John Mountain  
Cathleen Penny

#### EMBA 2004

*Ivey Society, Patron*  
Pau Kit Kwan  
*Ivey Society, The First Decade Society*  
Anthony Lam  
Peter Zehr  
*Other Annual Fund Contributions*  
Christopher Emery  
Lynette Hines  
Daniel Sin  
Stella Tse  
Debbie Young

#### EMBA 2005

*Ivey Society, Benefactor*  
Simon Tin-Yin Cua  
*Ivey Society, The First Decade Society*  
Mike Atkinson  
Jason Bras  
James Guo  
*Other Annual Fund Contributions*  
Anonymous  
Anonymous  
Mark Cox  
Michael Jack  
Patricia Lau  
Alice Man Wai Ngan

#### EMBA 2006

*Ivey Society, Patron*  
Stanley Luk  
*Ivey Society, The First Decade Society*  
Peter Caldwell  
Robert Portuguese  
William Ross  
Brian Sloan  
*Other Annual Fund Contributions*  
Michael Brady  
Shawn L Ivey

#### EMBA 2007

*Ivey Society, Deans' Circle*  
Betty Choi-Yom Tsoi  
*Ivey Society, Benefactor*  
Vince Cascone

Kevin Clement  
Steven Long Kit Lau  
*Ivey Society, The First Decade Society*  
Anonymous  
Stephen Bolton  
Nina Layla Chadha  
*Other Annual Fund Contributions*  
Ryan Rodrigues

#### EMBA 2008

*Ivey Society, Benefactor*  
Jorge Shangde Choy

### VEMBA Giving

#### VEMBA 1998

*Ivey Society, Founders' Circle*  
Navjeet Dhillon  
*Ivey Society, Benefactor*  
Leslie J Stephenson  
*Other Annual Fund Contributions*  
R B Dalby  
Diane A Gagner  
Sandy G Murphy

#### VEMBA 1999

*Ivey Society, Benefactor*  
**Dr Frederick B Swaine**  
*Other Annual Fund Contributions*  
Jacques Blais  
Andre M Boysen  
James Cunningham  
Susan Hollingshead  
Miles K McDonald  
Douglas Ostafichuk

#### VEMBA 2000

Suzanne Gouin  
**Richard Quesnel**  
Phillip Quinn  
David Schneid  
Richard Verrette

#### VEMBA 2001

Mohammad Azab  
Robert A Baker  
Judy Fairburn  
Steve Kanerva

#### VEMBA 2002

*Ivey Society, The First Decade Society*  
Marvin L Holmen  
*Other Annual Fund Contributions*  
Anonymous  
D P Airey  
Christine Burow

## Ivey's Investors | Class Giving

### HBA Giving

#### HBA 1932

*Ivey Society, Founders' Circle*  
The Late Harry R Yeandle

#### HBA 1937

**Helen M Yemen**

#### HBA 1938

George E Plewman

#### HBA 1939

Thomas Faust

#### HBA 1940

**H Marie Smibert**

#### HBA 1943

Harry D Barons

#### HBA 1945

*Ivey Society, Benefactor*  
Lawrence J Martello

#### HBA 1946

G R (Bob) Blake  
Robert J Steep  
**Carl F Woodward**

#### HBA 1947

*Ivey Society, Founders' Circle*  
**Gwen & the Late Ben Anders**  
**Dr Richard M Ivey**  
*Other Annual Fund Contributions*  
**W Robert Beacom**  
Tom T Nishio

#### HBA 1949

**K Mack Chrysler**  
**E Frank J Hull**  
R E Jolliffe  
**Ross H Strickland**

#### HBA 1950

**C Richard Sharpe**

#### HBA 1951

*Ivey Society, Founders' Circle*  
Robert S Rawlings  
*Ivey Society, Benefactor*  
**Ken & Jean Harrigan**  
*Other Annual Fund Contributions*  
James McKnight  
**Ted Milliken**

#### HBA 1952

**Donald H Blanchard**  
James Paterson

#### HBA 1953

**55th Reunion Social Committee:**  
**Donald Moffatt**  
*Ivey Society, Founders' Circle*  
**Colin L Hubling**

*Ivey Society, Deans' Circle*

**Cameron H Calder**  
Fleck Family Foundation  
**Hugh Morris**

*Ivey Society, Patron*

**Robert E Hubling**

*Ivey Society, Benefactor*

**Douglas E Heagle**  
J D McKellar  
Other Annual Fund Contributions  
**Michael Ashton**  
Boyd Chesney  
**Roger G Doe**  
**W Donald Mason**  
Mary Porter  
**Robert H Power**

#### HBA 1954

*Ivey Society, Benefactor*  
**Paul L Murray**  
Alan A Querney  
*Other Annual Fund Contributions*  
**Lawrence S Mattson**  
**Douglas G Page**  
**David K Poore**  
**Ronald D Ray**  
**Frank W Rowden**  
Gerald & Carol Shaw

#### HBA 1955

*Ivey Society, Benefactor*  
**M Bruce Deans**  
*Other Annual Fund Contributions*  
Lucien Pare

#### HBA 1956

*Ivey Society, Deans' Circle*  
**George S Dembroski**  
*Ivey Society, Benefactor*  
Anonymous  
John & Barbara Carroll  
Murray W Cooper  
**Bill & Shirley Eichenberg**  
Victor P Harris  
Dean Muncaster  
Donald W Paterson  
*Other Annual Fund Contributions*  
Anonymous  
Anonymous  
Robert R Barnard  
**Ronald Collyer**  
**Hugh John Cook**  
Eugene Farley  
**Mary McGee**  
James A McLaughlan  
Darrel R McLaughlin  
John Mitchell  
Dr Robert G Taylor

#### HBA 1957

*Ivey Society, Deans' Circle*  
Ross & Patricia (Craig) Hutchison  
**Bill Wood**

*Ivey Society, Benefactor*

Robert L Innes  
*Other Annual Fund Contributions*  
**Paul G Condon**  
J Robert Cowan  
Al Gleeson  
David R Gracey  
**Janis I Jente**  
William K Kritsch  
**Wayne Penny**  
**Ronald J Poth**  
John Ridout  
**Robert M Shields**  
Robert R Topp  
Charles E Wells

#### HBA 1958

**50th Reunion Social Committee:**  
Ross Archinald, Geof Clarkson, Clive Curtis,  
Morgan Fisher, Walter Keyser  
*Ivey Society, Deans' Circle*  
Rhys T Eyton

*Ivey Society, Benefactor*

**Geoffrey W Clarkson**  
Roger Emery  
*Other Annual Fund Contributions*  
Bill Alguire  
**Ross & Yvonne Archibald**  
Mitchell A Baran  
David G Eng  
David A Johnstone  
Donna J McDonald  
**John Sloan**

#### HBA 1959

*Ivey Society, Benefactor*  
**Donald C Morrison**  
*Other Annual Fund Contributions*  
**Edward Y Baker**  
Roderick E Brown

#### HBA 1960

Total: \$28,090  
Participation: 17%  
*Ivey Society, Founders' Circle*  
John R Currie

*Ivey Society, Benefactor*

Alexander W Eastwood  
**Dr & Mrs John A Humphrey**  
*Other Annual Fund Contributions*  
Justice B T Granger  
J Robert Hall  
John Ricketts  
J Jackson Tyson  
**Robert G Violette**  
**Professor Douglas Westgate**

#### HBA 1961

Total: \$2,550  
Participation: 10%  
*Ivey Society, Benefactor*  
Richard Innes  
*Other Annual Fund Contributions*  
Charles F M Ross  
**Gregory Kasparian**  
Jonathan Klein

## Ivey's Investors | Class Giving

### HBA 1962

Total: \$27,550  
Participation: 17%

*Ivey Society, Founders' Circle*  
Larry A Shaw

*Ivey Society, Benefactor*  
Ian L Lucas  
John Woodcock

*Other Annual Fund Contributions*  
Patricia Badeen  
J Douglas Love  
G Denton Miller  
**Ernest T Steward**  
Peter M Walter  
Douglas M Young

### HBA 1963

45th Reunion Social Committee:  
Tom McCarthy  
Total: \$1,525  
Participation: 9%

*Ivey Society, Benefactor*  
Dickson Rewbotham

*Other Annual Fund Contributions*  
**David M Brown**  
J A & D M Finlayson  
Thomas M Hall  
Glen H Heximer

### HBA 1964

Total: \$1,890  
Participation: 10%

*Ivey Society, Benefactor*  
**John G Craig**

*Other Annual Fund Contributions*  
Peter G M Baker  
Frederick A Beattie  
Richard Betteridge  
John E Martin

### HBA 1965

Total: \$5,535  
Participation: 19%

*Ivey Society, Benefactor*  
Anonymous

Ronald M Clark  
**Allan W Jackson**  
Edward J Kernaghan  
*Other Annual Fund Contributions*  
**John E C Carr**  
**John F Carter**  
Jack E Cronkwright  
Michel David  
James & Jean Keenleyside

### HBA 1966

*Other Annual Fund Contributions*  
James W Lawrason

### HBA 1967

Total: \$2,836  
Participation: 7%

*Ivey Society, Benefactor*  
**Gary R Barnes**  
**Marc E Beauchamp**

### Other Annual Fund Contributions

**John Burton**  
Ted Morrow

### HBA 1968

40th Reunion Social Committee:  
Mike Porter  
Total: \$3,950  
Participation: 13%

*Ivey Society, Benefactor*  
**Gary F Colter**  
J Edward (Ted) Johnson  
Ralph E Lean

*Other Annual Fund Contributions*  
**Douglas L Derry, FCA**  
F Lynn Glenn  
Joseph O Sinclair

### HBA 1969

Total: \$16,660  
Participation: 6%

*Ivey Society, Founders' Circle*  
**Gilles G G Ouellette**

*Ivey Society, Benefactor*  
Kim B White

*Other Annual Fund Contributions*  
Robert Earley

### HBA 1970

Total: \$1,200  
Participation: 8%

*Other Annual Fund Contributions*  
Larry Adamson

**John K Bell**  
Gordon Cudmore  
**Tim & Jane Marlatt**

### HBA 1971

Total: \$22,150  
Participation: 12%

*Ivey Society, Founders' Circle*  
**Henry Cheng**

**Arkadi Kuhlmann**  
*Other Annual Fund Contributions*  
John W Chandler QC  
**David E Neil**  
Douglas S Ripley  
Terry J Russell  
Daniel Scouler  
Larry & Brenda Sisnett  
Norman D Thomas

### HBA 1972

Total: \$14,660  
Participation: 9%

*Ivey Society, Founders' Circle*  
**Richard W Ivey**

*Ivey Society, Patron*  
**Douglas D Greaves**

*Other Annual Fund Contributions*  
**M James Evans**  
Thomas W Givens  
Jack C Herod  
John W Needham  
Bob Schram  
John W Thompson

### HBA 1973

35th Reunion Social Committee:  
Bill Rogers, Rick Slomka, Marty Thrasher  
Fundraising Committee:  
Peter Gudewill, Marty Thrasher  
Total: \$62,250  
Participation: 12%

*Ivey Society, Founders' Circle*  
**James B Cumming**

Don Darroch & Sandy Wood  
**Peter B Gudewill**  
Martin & Susanne Thrasher

*Ivey Society, Deans' Circle*  
**David C Holmes**

**Tevya G Rosenberg**  
*Ivey Society, Benefactor*

**Murray J Chant**  
Robin Dow

Barry M Gekiere  
John P Hilborn  
Jim Howe

**Jim Reynolds**  
Alan G Small

*Other Annual Fund Contributions*  
**Bruce Barton**

**Leonard J Cade**  
Stephen Landers  
**Edward L Postrozny**

**Rob Reynolds**  
Donald G B Ridpath  
Brian P Vyner

### HBA 1974

Class Agent: Matt Hannon  
Total: \$45,385  
Participation: 21%

*Ivey Society, Founders' Circle*  
**Lino (Lee) Sienna**

*Ivey Society, Deans' Circle*  
Anonymous

Anonymous  
**Patrick G C Crowley**

*Ivey Society, Patron*  
Anonymous

**William O Morris**  
**John & Teresa Vander Hoeven**

*Ivey Society, Benefactor*  
**C Greig Clark**

Merritt H Goddard  
Maurice A Johnson

**Brian W Jones**  
**Michael S Schwenger**

**Bruce M Shirreff**  
**Philip W Unger**  
**Mac & Cricket Yule**

*Other Annual Fund Contributions*  
Anonymous

**Jo Barrington**  
Alan R High

**Rick Lane**  
**C Ann MacDiarmid**

W Robert Morgan  
**Charles A Pickard**

**Shirley A Roberts**  
**James J White**  
**Steve & Jackie Wilkinson**

## Ivey's Investors | Class Giving

### HBA 1975

Total: \$8,600  
Participation: 8%

*Ivey Society, Deans' Circle*

#### **Barry & Mary Ullett**

*Ivey Society, Benefactor*

Mac Van Wielingen

*Other Annual Fund Contributions*

David G Best

#### **Brian R Foster**

Michael C Greenwood

Bob Hodgins

W Robert Morgan

Scott Murray

Bryan Pinney

### HBA 1976

Total: \$33,051  
Participation: 9%

*Ivey Society, Founders' Circle*

#### **Jon & Nancy Love Foundation**

#### **John & Maria Simpson**

*Ivey Society, Deans' Circle*

#### **Fraser Latta**

#### **W Allan MacEwen**

*Ivey Society, Benefactor*

Gord Brown

Lynne MacInnes

*Other Annual Fund Contributions*

Tom Andrews

Ray Castellani

Patricia Lenahan

Robert Orser

Harvey G Taraday

### HBA 1977

Total: \$74,955  
Participation: 17%

*Ivey Society, Founders' Circle*

#### **Sam Gudewill**

#### **Randy B M Royer**

*Ivey Society, Benefactor*

#### **William J Kiff**

#### **Maria A Knowles**

#### **John R Leitch**

#### **Kevin & Jill Yousie**

*Other Annual Fund Contributions*

Joanne L Abbott

Howard Bigham

Erna M Burns

John Couse

Lois M Fraser

Gary Grundman

#### **Georges C Houde**

Eric P Jones

#### **Mary F Killoran**

Susan E Nishida

Sue Pennal

Paul Robertson

#### **Paul Wildridge**

Stephen W Wilson

#### **Philip B Wisener**

Ouzi Zaccai

### HBA 1978

30th Reunion Social Committee:  
Reg Clarke, Doreen Harvey

Fundraising Committee:  
Dean Connor, Luke Sklar, Barbara Stymiest

Total: \$50,630  
Participation: 12%

*Ivey Society, Founders' Circle*

Gregory E About

#### **John & Zena Besterd**

*Ivey Society, Deans' Circle*

#### **Barbara G Stymiest**

*Ivey Society, Benefactor*

Jonathan & Judith Cooperman

#### **Nesbitt Family**

Paul M Richardson

*Other Annual Fund Contributions*

Anonymous

#### **Terence H A Bodnar**

#### **Robert E Brown**

#### **Gilles P Gagnon**

#### **Elizabeth M A Grasby**

#### **Doreen E Harvey**

#### **D Bruce Henning**

Gordon A Kelly

#### **Rychard Lardner**

#### **Claudia A Martin**

#### **W Lyle McLean**

#### **Colin Moore**

#### **Richard Russell**

#### **Robert E Simpson**

#### **Luke Sklar**

### HBA 1979

Total: \$38,024  
Participation: 17%

*Ivey Society, Founders' Circle*

Marti Morfitt & Patrick Weber

*Ivey Society, Deans' Circle*

#### **Doug McGregor**

*Ivey Society, Patron*

#### **Randolph J Dietrich**

Shelagh Donovan & Michael Boyd

*Ivey Society, Benefactor*

Michael Rolland

Roland C K To

*Other Annual Fund Contributions*

Peter Ballantyne & Margot Howard

#### **J Jay Brown**

Paul Bruner

John E Ellison

Nizar Esmail

David R Grant

Perry F Jeffery

Gary A Lyon

#### **N Keith McEachern**

Robert D Snowdon

James M Stinson

#### **Paul Switzer**

Douglas Wall

#### **Jim Yardy**

Andrew C Zsolt

### HBA 1980

Total: \$35,016  
Participation: 18%

*Ivey Society, Founders' Circle*

#### **Deborah J Barrett**

*Ivey Society, Deans' Circle*

Donald G Lang

*Ivey Society, Patron*

#### **Steve Lear**

*Ivey Society, Benefactor*

Robert J Bracey

#### **Cheryl M Davidson**

#### **Peter M Irwin**

#### **Robert & Sharon Staffen**

*Other Annual Fund Contributions*

Gordon Avar

Oscar P Belaiche

Linda M Berman

Janine Buis

Colleen R Campbell

Michael P Cowie

Anna L Ellins

Tom P Kimpel

David J Markle

D Charles Martin

#### **Douglas L Moody**

Jeff Myers

#### **Michael Rupar**

#### **Steven H Sims**

#### **Douglas Thomas**

#### **David J Thompson**

#### **Douglas Warwick**

### HBA 1981

Total: \$130,599  
Participation: 32%

*Ivey Society, Founders' Circle*

#### **E Scott Beattie**

#### **Lisa Colnett**

#### **Daniel A Devlin**

Edward & Stella Kennedy

Tim MacDonald

#### **Jeffrey Orr & Suzanne Legge**

#### **William J Quinn**

*Ivey Society, Deans' Circle*

#### **Ronald G Close**

Daniel H Granger

*Ivey Society, Patron*

#### **Stewart C Burton**

#### **Brian G Stock**

*Ivey Society, Benefactor*

Anonymous

#### **Nora Aufreiter & Lawrence Pentland**

#### **Scott & Jacqueline Wilson**

*Other Annual Fund Contributions*

Anonymous

#### **Louise Adams**

S D Baker & Associates

Theresa C Dietrich

Sandra Donders

Shelley Fisher

#### **Stephen Foerster**



## Ivey's Investors | Class Giving

**Patricia J Gass**  
**Paul A W Hayman**  
**Jeffery Hill**  
Eric I Johnson  
**Herald Krimmer**  
Dr Vance M Logan  
Jeffrey L McCuaig  
**Peter & Diane Nerby**  
Trudy Nixon-Fahie  
**Scott E Pennock**  
**Stuart & Lisa Penny**  
David F Robison  
Ken Shaver  
David Smith  
Ernie Spraggs  
**Dave Town**  
June K Wing  
Ronald H Wolf  
**Jane M Yates**  
Jim Zalusky

**HBA 1982**  
Total: \$14,733  
Participation: 10%

*Ivey Society, Founders' Circle*

**Rosamond A Ivey**  
*Ivey Society, Benefactor*  
**Patrick Horgan**  
**Dr P Fraser Johnson**

*Other Annual Fund Contributions*  
Anonymous  
Gregory Barron  
Kerri Golden  
Mary A Heisz  
**Thomas G Hinton**  
Jeffrey N Jackson  
**Christine M MacInnes**  
Rolfe M Philip  
David D Pollock  
Randall Rutherford  
Michael J Welling

**HBA 1983**  
25th Reunion Social Committee:  
Mark Verdun  
Fundraising Committee:  
Andrew Barnicke, Jay Bertram, Bill Henderson,  
Bill Jandrisits, John Towsley, Mark Verdun  
Total: \$165,000  
Participation: 13%

*Ivey Society, Founders' Circle*  
Tim McGuire

*Ivey Society, Deans' Circle*  
Andrew W Barnicke  
**Gillian H Denham & Stephen O Marshall**  
**Jeff & Sue Dossett**  
**William J Jandrisits**  
**Nicholas W Paine**  
David Wright  
*Ivey Society, Patron*  
Anonymous  
*Ivey Society, Benefactor*  
Anonymous  
Jack H Bertram  
William R Evans

Dan Mida  
**Mark J Verdun**  
*Other Annual Fund Contributions*  
Anonymous  
Anonymous  
Anonymous  
Bruce Allen  
**Michael J Browne**  
Kasia Czarski  
Robert Fish  
Bruce Gardner  
Elaine R Kelly  
G Bruce McFee  
**Paul D Methot**  
Dr Ted Newell, Atlantic Baptist University  
**David O'Neil**  
Elena Peet  
Dale E Richards  
Mary M Robertson  
Sally J Slumskie  
**Doug Welsh**  
Mark A Williams

**HBA 1984**  
Total: \$46,432  
Participation: 19%

*Ivey Society, Founders' Circle*

**George A Cope**  
**Carolyn M H Cross**  
Ray G Young  
*Ivey Society, Patron*  
**David Montanera**

*Ivey Society, Benefactor*  
Anonymous  
**Andrew Siu L Au**  
**Carolyn E Horan**  
**David A Peres**  
**David T Strickland**  
**Brian A Sweeney**  
Dr Mark B Vandenbosch  
**Adam R Waterous**  
*Other Annual Fund Contributions*  
Christopher J Bridgnell  
Bart Crandon  
Cindy Dunn  
Michael J Ewald  
Gerald C Holowachuk  
**Paul V Holscher**  
Mark A Jones  
Sarah Lee-Belsher  
Sergio Manarin  
**Robert B McClelland**  
Anthony Meehan  
Sean C V Mullin  
**Brent Trepel**

**HBA 1985**  
Total: \$11,572  
Participation: 16%

*Ivey Society, Patron*  
**William Quinn**  
*Ivey Society, Benefactor*  
**Russ & Lynda Bruch**  
Gabiella Bruyere

**Alicia & Tony Cestra**  
*Other Annual Fund Contributions*  
Anonymous  
Anonymous  
**Catherine Addison**  
Juliet Atha  
**Philippe Bergeron**  
Jim Cullen  
John J de Roos  
Stephen Dewis  
**Rhonda L English**  
Gregory W Johns  
Beverly & Gordon Knapp  
Jennifer A Lamb  
Steven Noble  
Linda Northgrave  
Lisa M Pankratz  
Richard Riley  
Jordan J Rose  
**Douglas Stirling**  
**Bruce J Tait**

**HBA 1986**  
Total: \$29,161  
Participation: 21%

*Ivey Society, Founders' Circle*

**Paul J Atkinson**  
*Ivey Society, Patron*  
Peter Simon  
*Ivey Society, Benefactor*  
Robert A Brown  
Mark W Downing  
John A Francis  
Tony & Angie Francolini  
Robert & Theresa Scullion  
Richard Talbot  
Chris G Tambakis  
**Mike Thorfinson**

*Other Annual Fund Contributions*  
Anonymous  
Anonymous  
Anonymous  
**Mark B Coutts**  
Kathryn Cronin (Montgomery)  
Brian Denega  
Carmen J Edgell  
Michael Glionna  
Hugh Hamilton  
Paul Ingram & Ann Martin  
Therese Loveland  
Ronald P Reinders  
Alison J Ryckman  
Scott A Thomson  
Carol M Trattner  
**Jeff Weiss**  
**James A Ziegel**

**HBA 1987**  
Class Agents: Darin Deschamps, Al Sellery  
Total: \$53,750  
Participation: 18%

*Ivey Society, Founders' Circle*  
**Darin & Lisa Deschamps**  
**Peter Samson & Cathy Williamson**

## Ivey's Investors | Class Giving

*Ivey Society, Dean's Circle*

**Ian Aitken**

Cynthia J Devine  
Paul K Pew

**Alan G Sellery**

*Ivey Society, Patron*

**Dino A DiCenzo**

**Todd McCuaig**

*Ivey Society, Benefactor*

Kurt E B Hausen  
Catherine & Clarke Herring  
Bill Jack  
Steve & Judy Meston  
Frank Snyders

*Other Annual Fund Contributions*

Anonymous  
Anonymous  
May Allison  
Carol Allmendinger

**David Gold**

David S Kerzner  
Peter Mathieson  
Terry B O'Hara  
Errol D Soriano

**Richard G Warburton**

**HBA 1988**

20th Reunion Social Committee:  
Stephanie Bowman, Valerie Connor,  
Anne Forsyth-Farrell, Greg Glista,  
Stacey Grant-Thompson, Darren Jack,  
Karen Powell, Paul Rogers, David Stanford,  
Catherine Stedman, Bill Tebbutt

Fundraising Committee:  
Stephanie Bowman, Doug Guzman

Total: \$31,700  
Participation: 7%

*Ivey Society, Dean's Circle*

**Doug Guzman & Sheila Brown**

*Ivey Society, Benefactor*

**Brett E B Barakett**

**Stephanie A Bowman**

Bee B Ng

*Other Annual Fund Contributions*

Anonymous  
Bridget J Child  
Allan Drewlo  
Brian W Reesor  
M E Lisa Sanders  
Linda M Spence  
Catherine E Stedman  
Susan R Storey

**HBA 1989**

Class Agents: Michael Pun

Total: \$21,947  
Participation: 21%

*Ivey Society, Founders' Circle*

Michael B Hill

*Ivey Society, Patron*

Michael W Pun

*Ivey Society, Benefactor*

**Daniel A Bubis**

Sante Corona  
Lee A Pettigrew

James Y Salem

Mark & Sandra Waldron

*Other Annual Fund Contributions*

Anonymous  
David A Carreiro  
Alex Dey

Michael A Elliott

Charles Evans

Dr Nicole R Haggerty

Cameron J Haygarth

**Sandra J Heldman**

**Brent A Hubbs**

Glen Kearns  
Tamara M Lewin

Kim E Marisa

Robbie Mason

Shaun J McKenna

Randal Price

Bryan C Tatoff

James Verwaayen

Robert Wortzman

Katherine Zemla

**HBA 1990**

Class Agents: Tim Watson, Michael A R Wilson

Total: \$16,397  
Participation: 12%

*Ivey Society, Dean's Circle*

Laura A Marks Entwistle

*Ivey Society, Patron*

Kevin & Kelley Dalton

Timothy W Watson

*Ivey Society, Benefactor*

Kimberly Facca & James Barltrop

Dave Dal Bello

Gregory & Tracy Guatto

**Bradley A Radin**

*Other Annual Fund Contributions*

Marysia Czarski, The Velocity Training Group

Nadine Joli-Coeur

Shawn Moriarty

Vivian Polak

Murray J Rundie

Peter R Siksna

Charles Steele

**Michael J Voskuil**

**Michael J Wilson**

**HBA 1991**

Total: \$36,957  
Participation: 19%

*Ivey Society, Founders' Circle*

**S W Eddie Law**

*Ivey Society, Patron*

**Mark J Lewis**

*Ivey Society, Benefactor*

**John G Inch**

*Other Annual Fund Contributions*

Anonymous

Anonymous

Anonymous

Kevin Condon

**Craig Ellis**

William Jin

David & Marla Larock (Copeland)

**Mark H Layne**

**Rosemary Li-Haupt**

Rhona K McNab Doyle

Lorne Potash

Greg Schinkel

Jill R Schnarr

**Angela M Schneider**

Leo Stathakis

Isabelle Trempe

**HBA 1992**

Total: \$15,026  
Participation: 14%

*Ivey Society, Founders' Circle*

Karen A Crich

*Ivey Society, Benefactor*

**Mark Runstedler**

*Other Annual Fund Contributions*

**Sherri Agnew**

Andrew Carragher

Jean-Paul Colaco

Rick B Cusimano

John Davis

Mary Fleming Graham

James Garcelon

Anup A Kuriya

**John Loh**

C Robert Lombardi

**Susan Lucas**

**Keitha A McClocklin (Mackay)**

Karen M Peesker (Boehnke)

Thomas J Pressello

Judy L Riege

**HBA 1993**

15th Reunion Social Committee:  
Andrew Fletcher, Gordon Sandford

Fundraising Committee:

Shawn Aspden, Kathryn Brohman,  
David Campbell, Karina Eichenberg,  
Kevin O'Brien, Alan Wright

Total: \$138,773  
Participation: 24%

*Ivey Society, Founders' Circle*

**Yolanda & David Campbell**

Maple Leaf Capital LLP

Michael E Wexler

*Ivey Society, Deans' Circle*

**Kevin & Andrea O'Brien**

*Ivey Society, Benefactor*

**Dr M Kathryn Brohman**

William Green

Keith E Laslop

**John McNain**

**David J Pennington**

**Alan Wright**

*Other Annual Fund Contributions*

Anonymous

Alissa Anzarut (Podheiser)

**Mark D Applebaum**

Lesley S Arbus

Shawn D Aspden

Michelle A Butler

Brent Choi

## Ivey's Investors | Class Giving

Scott & Alison Cooper  
Karina Eichenberg (Abramovich)  
Andrew Fletcher  
Sonia E Grunau  
Michael D Klinck

**Antoni A Krajewski**  
Cynthia H P Mar

**Pauline Martin & Family**  
Gregory H Mason  
Laird & Tina McLean

Andrea M Peel  
Paula J Puddy

**Gordon V Sandford**

**Darren J Wallace**

**Glen Webster**  
James R Witmer

### HBA 1994

Total: \$16,116  
Participation: 16%

*Ivey Society, Deans' Circle*

Jason J Boyer

*Ivey Society, Patron*

Peter Giacomelli & Chanda Carr

*Ivey Society, Benefactor*

Brian & Angela Edgeworth

David Ryan Gledhill

W Darryl White

*Other Annual Fund Contributions*

Laura E Alexander

Jannalee I Anderson

Kevin Brown

Bruce Campbell

Bryan Carlson

Fred Cox

Scott Davies

Donald R Hutchison

Barry I Newstead

Gemini Waghmare

Karin Wiens

Peter Wilcox

**Krista K Wylie**

**Jason C Zan**

### HBA 1995

Total: \$8,200  
Participation: 14%

*Ivey Society, Patron*

Peter Giacomelli & Chanda Carr

*Ivey Society, Benefactor*

Joel A McLean

*Other Annual Fund Contributions*

Alastair Caddick

Jason N Chang

Nicholas Cheung

**Jeannine Francis Pereira**

**Bradley P Fraser**

Grant A Gibson

**Leon Gurevich**

Jason Hollingsworth

Ellen R Jarmain

Davin Juusola

Peter Kalen

Jonathan Longworth

Christina Maco

Sean C Morrison

**Paul Y Takasaki**

### HBA 1996

Total: \$10,319  
Participation: 20%

*Ivey Society, Benefactor*

**Mike & Joey Cowan**

**Richard Kim**

Kevin S Williams

Jan C Wilson

*Other Annual Fund Contributions*

Anonymous

Tom Alder

**Matthew & Kerry Bennett**

Warren S Brown

**David C Burnie**

George A Castrounis

Michelle S Doig

Donna L English

Robyn Feldberg-Katz

Cameron Jeffreys

Adam Kafka

Nhat-So Lam

Kate McQuillan

**Karin A Mueller**

**Mark E Richards**

Jennifer Samarzija

Martha & Dirk Schrader

Julie P Strofolino

Victoria J Sweeney

Garrett Taylor

Ben Thomas

### HBA 1997

Class Agent: Eliza O'Neil

Total: \$9,197  
Participation: 16%

*Ivey Society, Benefactor*

**Joey & Mike Cowan**

Ryan J Finch

Joseph J Lo

**Santosh N Prasad**

*Ivey Society, The First Decade Society*

**Eliza C O'Neil**

*Other Annual Fund Contributions*

Anonymous

Domenic D'Alessandro

David Fisch

Mark C Gross

Key & Connie Kasravi

Andre Leung

**Craig S McDowell**

Marco J Petta

Nick D Pocrnic

Louise Procktor

**Todd M Purdy**

Judith Schulich

**Greg Secko**

Michael & Angela (Schwan) Switt

David Wood

### HBA 1998

10th Reunion Social Committee:

Erin Craven, Elizabeth Gray,  
Anthony Guagliano, Michael Rossi,  
Scott Vanderwel, Brenda Wesenberg

Fundraising Committee:

Aindrea Cramp, Brian Huen, Mark Murski

Total: \$20,056

Participation: 8%

*Ivey Society, Patron*

**Christopher Keith**

*Ivey Society, Benefactor*

**Andrea M Cramp**

**Brian Huen**

Mark Murski

**Matthew F Sheahan**

*Other Annual Fund Contributions*

Anonymous

Anonymous

Todd J Ambachtsheer

Patrick R Bend

Shawn Flick

Stacey L Greene

Mark A Halpren

Geoffrey B Herzog

**Edward I W Jennings**

Arpad Komjathy

Jason R Livingstone

Jorden D Sleeth

**Scotty Vanderwel**

### HBA 1999

Total: \$12,565  
Participation: 16%

*Ivey Society, Patron*

Kelly D Hampaul

*Ivey Society, Benefactor*

**Stuart M Elman**

Steven Long Kit Lau

**Phillip Pon**

*Ivey Society, The First Decade Society*

Nicholas Lakas

*Other Annual Fund Contributions*

**John Bayliss**

Jenn Carkner

Melanie Cooper (McLearn)

**Dave DeNoble**

**Scott L Foster**

**Brian L Ginsler**

**Lindsay Holtz**

Margaret Hunter

Robert Levine

Lee Merovitz

Anique C M Montrichard

**Matt J Nicholls**

Shetil Rastogi

Sandy Rattan

Brandon Rosen

### HBA 2000

Class Agent:

Stefan Bortolussi, Davin Li, Mike Ritchie

Total: \$3,680

Participation: 7%

## Ivey's Investors | Class Giving

*Ivey Society, Benefactor*

Kevin Clement  
Dann Cushing

*Ivey Society, The First Decade Society*

**James Obrigt**

*Other Annual Fund Contributions*

Stefan P Bortolussi  
Candice Faktor  
Olivia Lo  
Chris Lumley  
Hotspex Marketing Research

### **HBA 2001**

**Class Agent: Zameer Kassam, Vincent Pang**

**Total: \$3,788**  
**Participation: 10%**

*Ivey Society, Benefactor*

Anonymous

*Ivey Society, The First Decade Society*

Trevor R Hand  
Michael Lazarovits  
Susy Martins

*Other Annual Fund Contributions*

Anonymous  
Anonymous  
Ram N Amarnath  
Jonathan J Anderson  
Karen Bong  
Angel Yan Chun Cheung  
**Lindsay (Nicholl) & Neal Costello**  
Ryan Gardiner  
Maly Hout Bernstein  
James Kay  
Sabrina Yuan-Yi Liak  
Sunny Mehra  
David M Mueller  
Kamal Patel  
Kim Paulsen

### **HBA 2002**

**Total: \$5,390**  
**Participation: 8%**

*Ivey Society, Benefactor*

**Jeff M Baryshnik**

Ryan Harrison

*Ivey Society, The First Decade Society*

Wendy Chan  
Nina Chandarana  
Nick J Kuzyk

*Other Annual Fund Contributions*

Ms Sabrina Anzini

**David A R Brebner**

James G C Brooks  
Paul S Chapman  
Reuben N Ellis  
Ryan A Gendron

**Erin E Huff**

Eleni Mitsis  
Jason Thacker  
Jennifer Van Nest  
Jeffrey D Wilson

### **HBA 2003**

**5th Reunion Social Committee:**  
Winstron Bennett, Michael Guenter,  
Niki Healey, Mark Malerba

**Fundraising Committee:**  
Niki Healey, David Simons

**Total: \$2,325**  
**Participation: 5%**

*Ivey Society, The First Decade Society*

Anuj Chandarana  
David Simons  
Matthew Wiper

*Other Annual Fund Contributions*

Nicole Healey  
Sarah Helppi  
Andrew Liang  
Keren Lipnowski  
Rebecca Otto  
Andrew & Bill Parkes  
Lyndsay Prentice  
Nadia Turchetta

### **HBA 2004**

**Class Agents: Roz Angus, Candice Carson,  
Jenni Denniston, David French**

**Total: \$2,990**  
**Participation: 6%**

*Ivey Society, The First Decade Society*

Julia Bouvet  
Bruce Dean  
Sohail Lalani  
Fatima Surani

*Other Annual Fund Contributions*

Matthew Burbridge  
Elizabeth Butler  
Robert Cherun  
Matthew Cross  
Ian Da Silva  
Shael Fryer  
Lee Greenberg  
Hanif Kassam  
Blaine Kideckel  
Anne Tauber

### **HBA 2005**

**Class Agents: Steve Kenning**

**Total: \$3,170**  
**Participation: 7%**

*Ivey Society, Benefactor*

Michael Yue

*Ivey Society, The First Decade Society*

Nicole Bilyd  
Mariam Hashmi  
Mark Laing  
Aaron Minocha  
Miriam Rybalov  
Mark Schneider  
Dan Sheremeto  
Alex Vander Hoeven

*Other Annual Fund Contributions*

Ari Black  
Steve Kenning  
James Kufsky  
Alex Lau

Devon Leckie

Jonathan Paul  
Louise Schuurmans  
Michael Shour  
Jason Stornelli  
Mark Trovato  
Jocelyn M Ullett

### **HBA 2006**

**Class Agents: Adam Bortolussi**

**Total: \$2,770**  
**Participation: 7%**

*Ivey Society, The First Decade Society*

Christopher Cruz  
Terence Jou  
Sabrina Kumar  
Robbert McCaig  
Andrew Michalik  
Dirk Propfe  
Anton Vidgen  
Kimberly Yeung

*Other Annual Fund Contributions*

Anonymous  
Anonymous  
Anonymous  
Brian Bacal  
Helen Cai  
Crystal Costanzo  
Paul Leishman  
Tara Negrave  
Franky Ng  
Ryan Pawliw  
Shaloo Savla  
Nathan Tam  
Shelly Wu

### **HBA 2007**

**Total: \$4,238**  
**Participation: 14%**

*Ivey Society, The First Decade Society*

Anonymous  
Rishma Allibhai  
Ericka Ayala  
Jonathan Batson  
Chase Bethel  
Matthew Fenton  
Jeffrey Greenspoon  
Andrew Jackson  
Lorcan Kilmartin  
Philip Lacombe  
Jackelyn Livesey  
Kevin Makowchik  
Andrew Rapsey  
Matthew Sobczyk  
Alyza Tarmohamed  
Ruth Teng  
Tania Zambri

*Other Annual Fund Contributions*

Shazia Banduk  
John A Cameron  
Rupert Cao  
Marc Carette  
Andrew Coates

## Ivey's Investors | Class Giving

Katrina Coughlin  
Paola DiCarlo  
Paul Heuts  
Brendan Howard  
Stephanie Hui  
Lauren Hulme  
Meaghan Jansen  
Ksenia Krikunovski  
Joshua LeBrun  
Robert Levy  
Jennifer Lomax  
Andrew Macdonald  
Simon Moody  
Tyler J O'Hagan  
Lisa Olsen  
Maciej Pach  
Boris Poley  
Michael Pope  
Alexandra Power  
Radhika Ray  
Eero Traagel  
Matthew Vines  
Jenna Weaver  
Karrolyn Wong

### HBA 2008

Total: \$5,630

Participation: 19%

*Ivey Society, The First Decade Society*

Anonymous  
Anonymous  
Artur Biurkowski  
Navi Boparai  
Leanne Bowden  
Jessica Budd  
Zerrin Cetin  
Deana Chan  
Prabhsimran Chandhoke  
Janet Chow  
Clarence Chui  
Jason Cottrell  
Gregory Donovan  
Tom Dovey  
Sarah Draper  
Andrea Friday  
Jenny Fung  
Wajdi Ghoussoub  
Nathalie Hull  
Wilson Huynh  
Lauren Kehl  
Rahim Ladak  
Eugenia Loukian  
Neil McCarron  
Reed McDonnell  
Sean McKeown  
Mandy Meirovich  
Jeffrey Mo  
Karim A Moolani  
Matthew Murray  
John O'Sullivan  
Quillan Quarrington  
Leena Raja

Ashley Riske  
Kay Schonberger  
Andriy Stolyarov  
Henry Tang  
Max Torokvei  
Matthew Unruh  
John Vernon  
*Other Annual Fund Contributions*  
Anonymous  
Ankit Bhatt  
SeungHwan (James) Chang  
Robert Davis  
Nadia Festinger  
Shannon Field  
Ileana Funez  
Daniel Joffe  
Tae Young Kim  
Vishwath Kumar  
Jordan MacKenzie  
Elan Marko  
David McCann  
Neil Peet  
Russell Petrie  
Adam Reeds  
Patrick Richardson  
Laura Rugar  
Maureen Schenck  
Ben Sinclair  
Daniel Spitz  
Matthew Staffen  
Eric Theoret  
Ross Tom  
Trang Trinh  
Patricia Woo  
RenÈe Zatzman  
Christy Zhou

### PhD Giving

*Ivey Society, Benefactor*

**Dr M Kathryn Brohman**  
Tony & Angie Francolini  
Dr Shige Makino

*Other Annual Fund Contributions*

Dr Neil A R Abramson  
Dr Robert W Archibald  
Dr R William P Blake  
Dr Robert G Blunden  
Dr Rosaire M Couturier  
Dr Bernard G Garnier  
Dr Nicole R Haggerty  
Dr Ross Henderson  
Dr Andrew C Inkpen  
**Dr P Fraser Johnson**  
Dr Ariff Kachra  
Dr Herbert F MacKenzie  
Charles E Mossman  
Dr Derrick J Neufeld  
Suzanne Rivard  
Dr D Sandfield Staples  
Daniel Szpiro  
Dr David T Wilson

### DBA Giving

*Ivey Society, Founders' Circle*

Walter R Badun

*Ivey Society, Deans' Circle*

Don & Joan McGeachy

*Ivey Society, Benefactor*

Donna & Fred Berlet

Lana & Gary Davis

**Miguel Fernandez**

Mr & Mrs Arthur E Foster

*Other Annual Fund Contributions*

Anonymous

Andrew Billingsley

Richard H Carr

**William E Davis**

Louis O Drouin

Brian P Drummond

Donald J Grossman, CA

Moffat R Hill

Nunzio M Spino

Cdr W Bruce Wilson

## Ivey's Investors | Faculty, Staff & Friends

### Faculty, Staff & Friends

#### *Ivey Society, Founders' Circle*

La Fondation De Gaspé Beaubien  
Gerald Schwartz  
& Heather Reisman Foundation

#### **HongKong Pei Hua Education Fdn**

IVEY Alumni Association, Toronto  
Jim Leech & Deborah Barrett  
Don MacDonald

#### **MBA Association**

Rosemarie McClean  
Ted Medland  
Dorothy Mikalachki  
The Wesley

& Mary Nicol Charitable Foundation

Tom O'Neill

Ontario Employers'  
Labour Relations Committee

Sean Rogister

Peter Sharpe

William Shurniak

Anne & Andrew Spence

Andy & Helen Spriet

#### **Carol M Stephenson**

Barbara Zvan

#### *Ivey Society, Deans' Circle*

Anonymous

Peter J Barbetta

W Geoffrey Beattie

Jalynn H Bennett

#### **Judy & Murray Bryant**

Ann & Bill Fleming

Harrison Pensa

IVEY Alumni Association, British Columbia

C B Johnston Family

Neil & Leanne Petroff

Arnold J Shell

Lawrence Tanenbaum

Lawrence G Tapp

Rosemary Zigrossi

#### *Ivey Society, Patron*

Roger Barton

#### **Dr Francesco Braga**

Federation of Chinese Canadian Professionals  
(Ontario) Education Foundation

Zev Frishman

Leslie J Johnson

Harry & Evelyn Rosen

Shelly & Robert Siskind

Andrea M Stephen

John Sullivan

#### *Ivey Society, Benefactor*

Anonymous

Anonymous

#### **Bruce Barker**

Peter & Jennifer Bell

John Brennan

Tony & Alicia Cestra

Kelly Cole

Aindrea Cramp

Joseph & Lynne DiStefano

Tania Martin & Stephen Dowd

#### **James A Erskine**

Tony & Angie Francolini

Jasmine Herlt & Doug Steiner

Dr Christopher A Higgins

Dan Houle

York Huang & Jenny Zhang

Dana James

Peter Jensen

#### **Dr P Fraser Johnson**

Elizabeth May

Hugh McMullan

Dean Metcalf

Robert Mikalachki

Sandy Mikalchki

Jean & Jocelyne Monty

Eric Morse

Yoshihide Nakamura

Ontario Teachers Pension Plan

#### **Pirie Foundation**

Allan Reesor

Robert Rubinoff

David S Simpson

Paul M Tellier

Erol Uzumeri

Dr Mark B Vandenbosch

#### **Cathy Vitkauskas**

#### *Ivey Society, The First Decade Society*

Jorge Shangde Choy

Miranda Shuk Yi Wong

#### *Other Annual Fund Contributions*

Anonymous

Anonymous

Anonymous

Anonymous

Anonymous

Anonymous

Anonymous

Anonymous

Anonymous

Anonymous

Anonymous

Anonymous

Anonymous

Anonymous

Anonymous

Anonymous

Anonymous

Anonymous

Anonymous

Anonymous

Anonymous

Anonymous

Anonymous

Anonymous

Anonymous

Anonymous

Anonymous

Anonymous

Anonymous

Anonymous

Anonymous

Anonymous

Anonymous

Anonymous

Anonymous

Anonymous

Peter Chow

John-Derek Clarke

K W Lemon Classic

N Coffey

Rachel A J Condie

Daniel P Condon

John M Connolly

Paul Connor

Barbara & Douglas Cooper

June Cotte

Laura Cousins

Jonathan da Silva

Brian Davies

Heather Davis

Dr Niraj Dawar

Mr Dean DeBlois

Kelley Irene Derrett

Bill R Dickie

Caroline Duncanson

Paul Eastman

Janet Eldrett

Anne Engel

Michael English

Mr & Mrs Robert Fair

Maxwell M Farley

Mr & Mrs A S Finlayson

Joan E Fleet

Stephen Foerster

Matthew Ford

Frances Franchuk

Dr Jeffrey Gandz

#### **Terri Garton**

Mr & Mrs Kenneth Giles

James Gilpin

Mr & Mrs John Girvin

M Katharine Gonder

Henryka Gora

John & Virginia Gordon

#### **Elizabeth M A Grasby**

Xinyi Gu

Sanam Hadavi

Dr Nicole R Haggerty

Mei Han

Elizabeth N Harvey & E Drew Harvey Bradley

Dr James E Hatch

Nicole Healey

Mary A Heisz

Clara Hu

Chris Iliffe

#### **Sharon Irwin-Foulon**

Sayuri Jodoi

Janice Farrell Jones

Jess Joss

Andy Kam

Lisa Kamenar

Rob Kelland

Gene Kelly

Tara Kenney

Ann E Kertes

Janet Kim

Paul & Jacqueline King

Layne D Kirkpatrick

Ida Kmiec

Vanessa Kong

Professor Alison Konrad

## Ivey's Investors | Ivey Legacies

Alexandra Koziak  
Cynthia Kumar  
Zayna Kunic  
Insa Kuo  
Jerry Lacina  
Ameya Lal Madan  
Katalin Lazarovits  
Miriam Lazarovits  
Dr Diane Leath  
Inger Lemmon  
Brian E Lessard  
Lipton, Wiseman, Altbaum & Partners LLP  
B R Lishman  
Catherine E Littlejohn  
Thomas & Rosemary Logan  
Marion Lowe  
Keith MacDougall  
Linda MacKenzie  
Murray Mackey  
Tina & Craig MacKinlay  
Jennifer Makkreel & Andrew Boggs  
Kim Malcolm  
Helen Martin  
Keith McArthur & Laura Williams  
Sarah McCarthy  
**Andrea McGuigan**  
Cynthia McIntyre  
Alison McKechnie  
Joby McKenzie  
Laura McPhedran & Ben Barnes  
Dr & Mrs GE Meads  
Daniel Meister  
Jerry Mesner  
John Mitchell  
Stacy Mitchell  
Yassi Mohseni  
Mark Mullally  
Larry Mynny  
Dr Derrick J Neufeld  
Dr E F Peter Newson  
Angelina Ng  
**Rita Nicholson**  
Kenneth H O'Hagan  
Dan O'Hara  
Hon G Osbaldeston  
Marna Oseen  
Margaret Otton  
Michael Palmer  
Mary Panopoulos  
Dr Michael Parent  
Nancy D Park  
Michael Passmore  
David & Carrie Pattenden  
David & Ruth Pattenden  
Dawn Png  
Mary F Portis  
Mr & Mrs Ronald Potter  
Timothy Potter  
David & Dorothy Preston  
Chipman A Purdom  
Marg & Jim Reffle & Family  
Bob Richardson  
Daria Romanish  
Joanna Rotenberg  
Liana Sam

Judy Saunders  
R Schapiro  
Joanne Schneider  
Dr William Schneider  
**Gerard H Seijts**  
Philip Seo  
Andrew Shaw  
Larrie & Mika Shepherd  
Tracy & Bruce Simpson  
Tom Sirdevan  
Diana & Jim Soame  
Maureen L Solecki  
Dr Sринi Sridharan  
The Partners at Starbucks  
The Mireille &  
Murray Steinberg Family Foundation  
Daphne J Stevens  
Jason Stornelli  
Melendy Sua  
Keith L Sumner  
Nave Sunner  
The Tartick Family  
Theodore & Hye Jin Te  
Yvonne Tiessen  
Mary Townshend  
Walter Traversy  
Paul & Laurie Tremaine & Family  
Terry Vaughan  
Peter Vincent  
Rebekah Walker  
James C Walton  
Karen Ward, Curiosity Inc  
Mike Warner  
Florence S Wettlaufer  
Mr & Mrs Gwyn Williams  
Mr & Mrs Ken Wiltshire  
John Wolnik  
Connie Wong & Jason Leong  
Gabriel Wong  
Professors Albert R & Vivian Wood  
Kristine Wulf  
**Larry & Jessie Wynant**  
Jennifer Wyant  
**Wendy Wywrot**  
Sophia Yap  
Johnny Yeung  
Sam Younes  
Linda Zhang  
Yong Zhang  
Ronald Ziegel  
Donald Ziraldo  
Susan Zorzi

### Ivey Legacies

We are pleased to recognize and thank the following generous donors who have made a commitment to Ivey's future through their wills, life insurance policies and other legacy gifts.

Anonymous  
Anonymous  
Anonymous  
Anonymous

Anonymous  
Anonymous  
Anonymous  
Anonymous  
Anonymous  
Neil M Armstrong, HBA '49  
Deborah A & William E Aziz, HBA '79  
Walter R Badun, DBA '55, MBA '57  
Dr Ralph M Barford, LLD  
Gerald E Beasley, MBA '68  
G R (Bob) Blake, HBA '46  
Dr Leslie Bowd, MBA '83  
Tom Brent, HBA '59  
Douglas G Brock, MBA '61  
Geoff & Nancy Browne, HBA '77  
Heather & Neil Campbell, HBA '82  
Gaylanne Phelan &  
The Late Richard H Chenoweth, MBA '78  
Margaret Clarke &  
The Late Gilbert C Clarke, HBA '33  
Linda & Randall Craig, HBA '86  
Margo & George Enns, HBA '59  
Karyn & Kevin Erker, MBA '91  
James A Erskine, MBA '67  
Brian R Foster, HBA '75  
Morna J Fraser, MBA '89  
Stephen G Friday, MBA '82  
Douglas P Hayhurst, HBA '69  
Kathleen J & Mark E Henning, MBA '84  
Thomas P Howard, MBA '72  
A Margaret Hughes, HBA '42  
Dr Richard M Ivey, HBA '47 & the Late  
Dr Beryl Ivey Randall Jang, MBA '77  
Robert A Jennings  
Jean & James Keenleyside, HBA '65  
Margaret A Kimball, HBA '60  
Louis Lagasse, MBA '73  
Christopher H Lang, HBA '64  
R Jack Lawrence, HBA '56  
Andrew G Lonseth, MBA '80  
David K Lowry, HBA '64  
Duncan P Macgregor, HBA '64  
Lynne & Paul McCrea, MBA '60  
Steve McDonald, MBA '83  
David R McGregor, MBA '86  
Donald McIntosh, MBA '58  
Mona & Keith Munro, HBA '64  
Dr R Allan Patterson, MBA '67  
The Late George S Peters, HBA '45  
The Late Lloyd J Raney, HBA '56  
Douglas M Reid, HBA '58  
Catherine Paquet & Pierre Rivard, MBA '83  
J Wayne Rogers, HBA '72  
C John Schumacher, MBA '84  
William Shurniak, LLD  
Ronald J W Simpson, MBA '69  
Susan A Carlyle & David G Southen, MBA '86  
The Staffen Family  
Rob, HBA '80, MBA '02,  
Sharon, Julia HBA '06, Matt & Candra  
Carol M Stephenson  
Eileen & Robert Stuebing, MBA '74  
Lawrence G Tapp  
Klaus H Thiel, MBA '71  
Mary & George B Turnbull, HBA '49

## Ivey's Investors | Corporate Donors | Matching Gift Companies

James A W Van Slyck, HBA '64  
Wendy M Whyte, MBA '83  
William P Wilder  
Barbara & John F Wood, HBA '64  
Donald P Woodley, MBA '70  
The Late Harry R Yeandle, HBA '32  
Alicia Zavitz

### Corporate Donors

Our strength lies in our corporate values of excellence, integrity, teamwork and relevance. We share these same values with our corporate partners who, with our sincere thanks, support us financially as well as with their investment of time and talents.

#### \$500,000 to \$1,000,000

ING Bank FSB,  
ING Canada & ING Bank of Canada  
RBC Foundation  
Scotiabank  
TD Bank Financial Group

#### \$100,000 to \$249,999

AstraZeneca Canada Inc  
CIBC  
New World Development Co Ltd

#### \$50,000 to \$99,999

BMO Financial Group  
Lan Kwai Fong Holdings Ltd

#### \$25,000 to \$49,999

Anonymous  
Distacom  
Edco Management Ltd  
Eli Lilly Canada Inc  
Ernst & Young  
Fairfax Financial Holdings Ltd  
Gilead Sciences Canada Inc  
GlaxoSmithKline Canada Inc  
Great West Life, London Life & Canada Life  
Merck Frosst Canada Inc

#### \$10,000 to \$24,999

Accenture Inc  
Bell Canada  
Boston Consulting Group of Canada Ltd  
CIBC World Markets  
Davies Ward Phillips & Vineberg LLP  
Deloitte & Touche Inc  
General Mills Canada Inc  
Goldman Sachs Canada Inc  
Harry Rosen Inc  
KingSett Capital  
KPMG LLP  
Mackenzie Financial Corporation  
Maple Leaf Foods Inc  
National Bank Financial Group  
Onex Corporation  
Pacific Basin Economic Council  
Pelmorex Media Inc  
Polar Securities Inc  
PricewaterhouseCoopers  
Torys LLP

#### Other Annual Fund Contributors

Anonymous  
3M Canada Company  
Acuity Investment Management Inc  
AIC Ltd  
Air Canada  
Barrick Gold Corporation  
BDO Dunwoody LLP  
Blank Rome LLP  
Boiler Inspection & Ins Co  
Bosch Rexroth Canada  
Burgundy Asset Management Ltd  
Caldwell Partners International Inc  
Canada Pension Plan Investment Board  
Cantor Fitzgerald (Hong Kong)  
CCL Industries Inc  
China Light & Power Company  
Citibank Canada  
Colliers International  
Connor Clark & Lunn Financial Group  
EDPRO Capital Inc  
Electro-Motive  
Export Development Canada  
Financial Executives International  
- Toronto Chapter  
Foresters  
Gardiner Roberts  
GE Asset Management Canada  
General Electric Canada Inc  
Gerson Lehrman Group (Asia) Ltd  
Glory Harvest Group Holdings Ltd  
Growthworks WV Management Ltd  
Hamilton Spill Furniture Group  
Hampton Securities (Asia) Ltd  
Harry Rosen Inc  
Hay Associates Canada Ltd  
Highstreet Asset Management Inc  
Hong Kong Convention and  
Exhibition Centre (HKCEC)  
Hotspex Marketing Research  
HSBC Hong Kong  
IBM Canada Ltd  
ICS Trust (Asia) Ltd  
Imperial Capital Group  
ING Asia Pacific Ltd  
Institute of Chartered Accountants  
Kraft Canada Inc  
Lighthouse Technologies Ltd  
Manulife Financial Corporation  
McCormick Canada Inc  
Merrill Lynch Canada Inc  
Morgan Stanley Canada Ltd  
Mosaic Sales Solutions Canada Operating Co  
MR SUB  
Neal Pallett & Townsend LLP  
New World China Enterprises Projects Ltd  
OMERS  
Pacific & Western Bank of Canada  
Pallett Valo LLP  
PCL Constructors Eastern Inc  
Petro-Canada Inc  
Rexroth Bosch Group  
Pinetree Capital Ltd  
Ray & Berndtson Ottawa Inc  
Research in Motion Ltd  
RLG International

Rogers Communications Inc  
RSM Richter LLP  
S C Johnson & Son Ltd  
Saxon Funds Management Ltd  
SECOR Consulting  
Softchoice Corporation  
St Joseph Communications  
Systems Plus Ltd  
Telus Mobility Inc  
The Coca-Cola Export Corporation  
The Travel Network Corporation  
Ventures West Management Inc  
Worldvest Holdings Ltd

### Matching Gift Companies

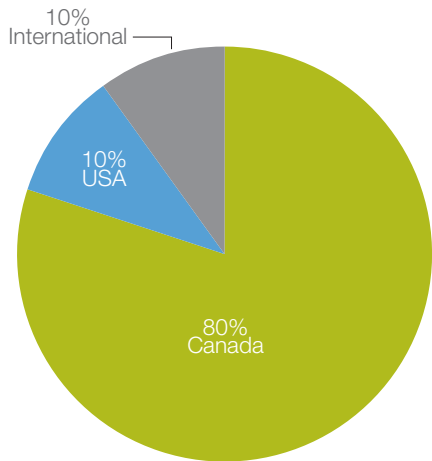
Corporate matching gifts are an important source of support for the School. We deeply appreciate the efforts Ivey alumni and friends make to secure these gifts.

AllianceBernstein LP  
AMD Canada  
Assured Guaranty Corporation  
BASF Canada Inc  
Bell Canada  
BMO Financial Group  
Cardinal Health Giving Station  
Chevron U S A Inc  
CSL Group Inc  
Dell Canada  
Dynamic Fund Foundation  
Ernst & Young  
Fidelity Investments Canada Ltd  
General Electric Canada Inc  
Goldman Sachs Group Inc  
Honeywell Hometown Solutions  
HSBC Bank Canada  
Hydro One Employees &  
Pensioners Charity Trust  
IBM Canada Ltd  
Investors Group Inc  
Ivanhoe-Cambridge  
CDP Capital Real Estate Group  
JPMorgan Chase & Co  
KPMG LLP  
Macquarie North America Ltd  
Microsoft Corporation  
MMC Matching Gifts Program  
Oracle Corporation Canada Inc  
PCL Constructors Eastern Inc  
Procter & Gamble Fund  
Starbucks Coffee Company  
Steelcase Foundation  
Sun Life Assurance Company of Canada  
Suncor Energy Inc  
TD Bank Financial Group  
TELUS Corporation  
The Boeing Company  
UBS Bank (Canada)  
Union Gas, A Spectra Energy Company  
UPS Canada

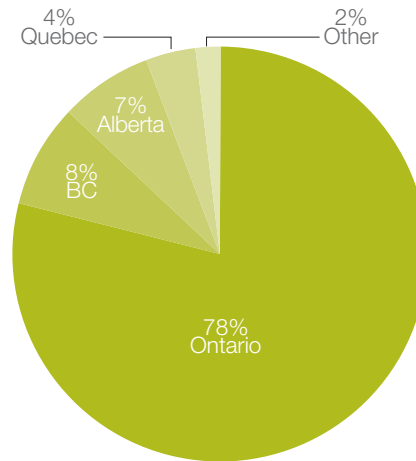


# Alumni

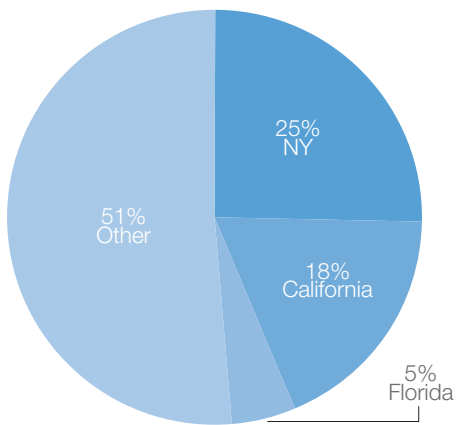
## Alumni by Geography



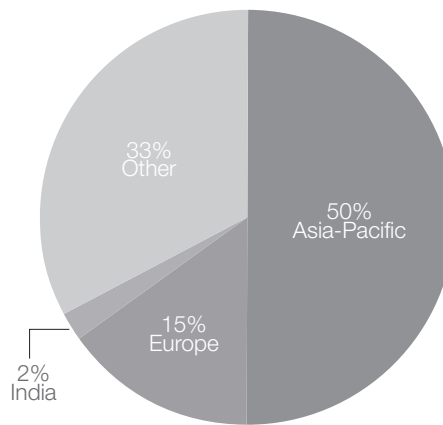
Alumni Around the World  
Total 16,803



Alumni in Canada  
Total 13,518

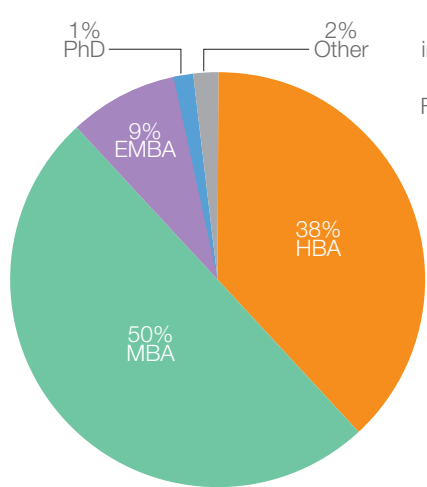


Alumni in USA  
Total 1,678



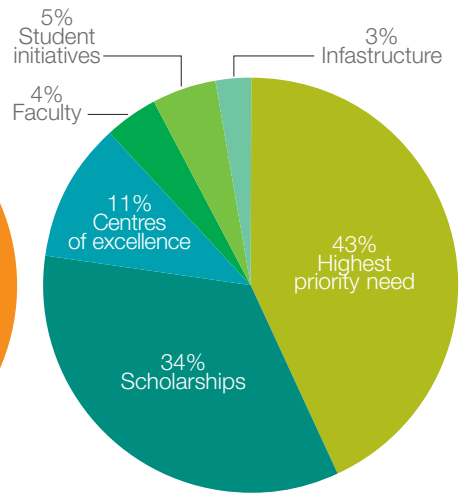
Alumni Internationally  
Total 1,607

**Degrees Granted**

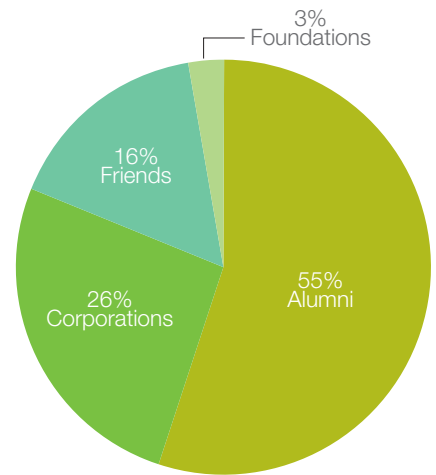


Total 20,062

**Annual Fund Gifts**

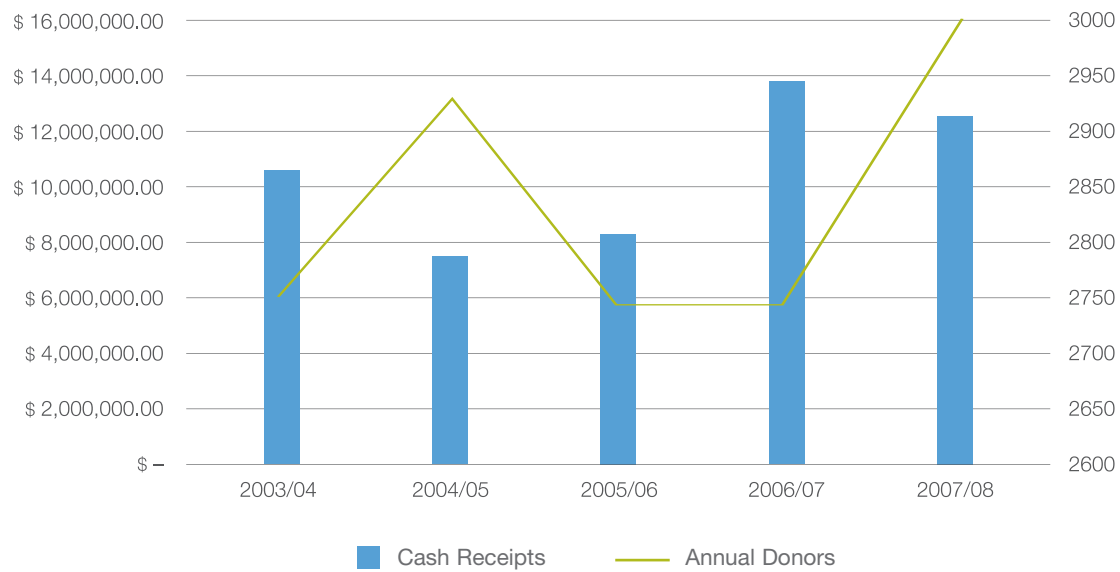


**Gift by Source**



Total \$ 10,776,498

**Year to Year Receipts**



## HBA Program at a Glance

### 2008 HBA Class Profile

Class Profile	
Male	62%
Female	38%
AEO	50% / 187 students
non-AEO from Western	36% / 136 students
Other Universities	14% / 53 students
Attended Grade 12 in Ontario	71.5% / 268 students
Attended Grade 12 outside of Ontario in Canada	18.1% / 68 students
Attended Grade 12 outside of Canada	10.4% / 39 students
International Citizenship	10%

### 2008 Employment

Job Status	% of Job Seekers
Received Offer(s)	92%
Still Seeking Employment	8

Reporting Information	% of HBA Class
Actively Seeking Employment	86%
Not Seeking Employment	4%
Reporting Rate	90%

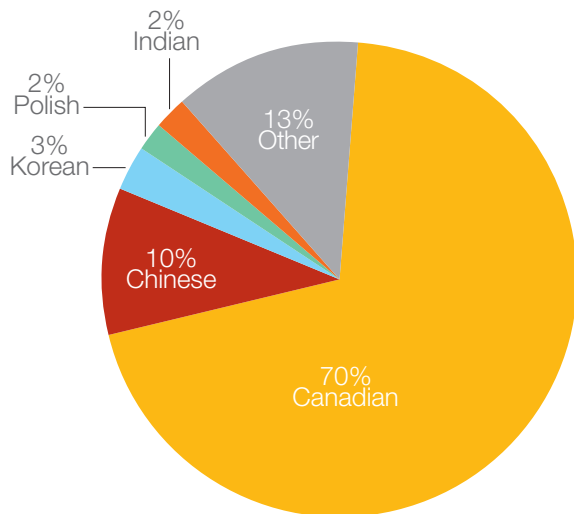
### Compensation by Industry

Average Total Compensation was \$60,040\*

\*Includes: Base salary, signing bonus and other guaranteed compensation, as reported by our graduates.

Industry - Base Salary	% of Students	High	Mean
Consulting-Management	18%	\$75,000	\$61,164
Consulting-Other	4%	\$65,000	\$56,429
Consumre Packaged Goods	7%	\$62,000	\$54,409
Energy/Resources	2%	\$69,540	\$59,808
Finance-Accounting	21%	\$48,000	\$43,875
Finance-Corporate Office	3%	\$57,000	\$48,965
Finance-Corporate Banking	24%	\$92,500	\$63,501
Finance-Investment Management	2%	\$75,000	\$58,500
Finance-Other	5%	\$75,000	\$54,886
IT/Telecommunications	3%	\$65,000	\$58,286
Manufacturing	2%	\$52,000	\$48,900
Wholesale/Retail	2%		
Other	8%	\$61,200	\$42,093

### Demographics: Birth Country



## MBA Program at a Glance

### 2008 MBA Spring Class Profile

71 students    9 faculties in previous education    25 different languages spoken  
 11 countries    15 industries in work experience    39% have more than one degree  
 6 provinces    36% have international work experience

Class Profile		Citizenship		Birth Country
Total Class	71	Canadian	75%	54%
Male	75%	Chinese	4%	7%
Female	25%	Indian	11%	18%
Years Work Experience	4.6	Latin American	1%	3%
Average Age	29	Other	9%	18%
Average GMAT	658			

### 2008 MBA Fall Class Profile

73 students    9 faculties in previous education    31 different languages spoken  
 8 countries    29 industries in work experience    38% have more than one degree  
 5 provinces    29% have international work experience

Class Profile		Citizenship		Birth Country
Total Class	73	Canadian	73%	55%
Male	75%	Chinese	11%	12%
Female	25%	Indian	8%	12%
Years Work Experience	5.4	Latin American	3%	7%
Average Age	30	Other	5%	15%
Average GMAT	657			

### 2008 Employment

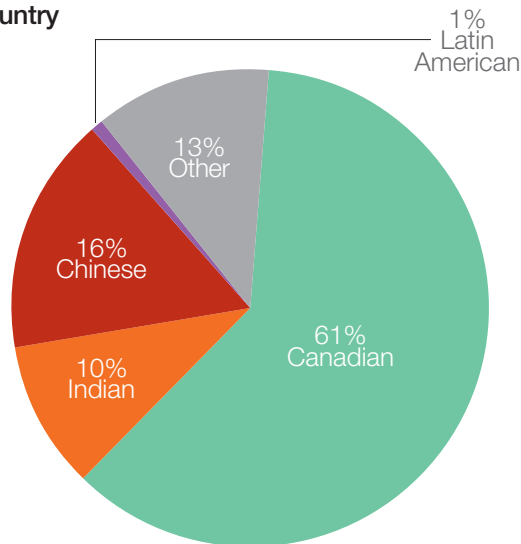
Job Status	% of Job Seekers
Received Offer(s)	91%
Reporting Information	% of MBA Class
Actively Seeking Employment	88%
Not Seeking Employment	6%
Reporting Rate	94%

### Compensation by Industry

Average Total Compensation was \$103,781\*. Up from \$93,949 in 2007.  
 \*Includes: Base salary, signing bonus and other guaranteed compensation, as reported by our graduates.

Industry - Base Salary	% of Students	High	Mean
Consulting-Management	20%	\$135,000	\$104,800
Consulting-Other	7%	\$115,000	\$81,625
Consumer Packaged Goods	7%	\$72,000	\$67,750
Finance-Corporate Banking	11%	\$134,000	\$92,400
Finance-Corporate Office	12%	\$94,000	\$83,750
Finance-Investment Management	3%		
Finance-Insurance	4%	\$96,000	\$87,000
Healthcare/Pharmaceuticals	7%	\$120,000	\$86,167
IT/Telecommunications	10%	\$115,000	\$91,118
Manufacturing	4%	\$78,000	\$73,667
Wholesale/Retail	3%	\$130,000	\$92,750
Other	12%	\$120,000	\$88,450

### Demographics: Birth Country

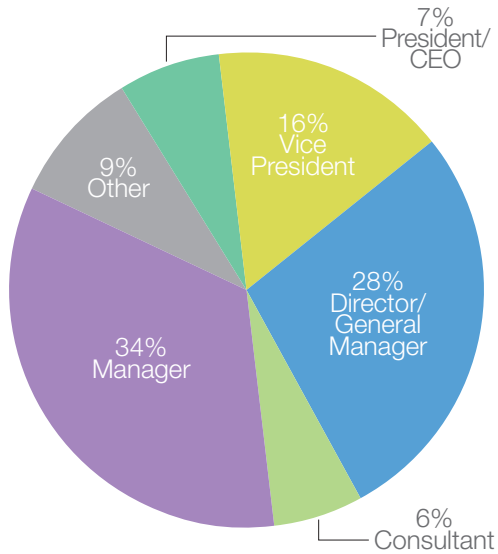


## EMBA Program at a Glance

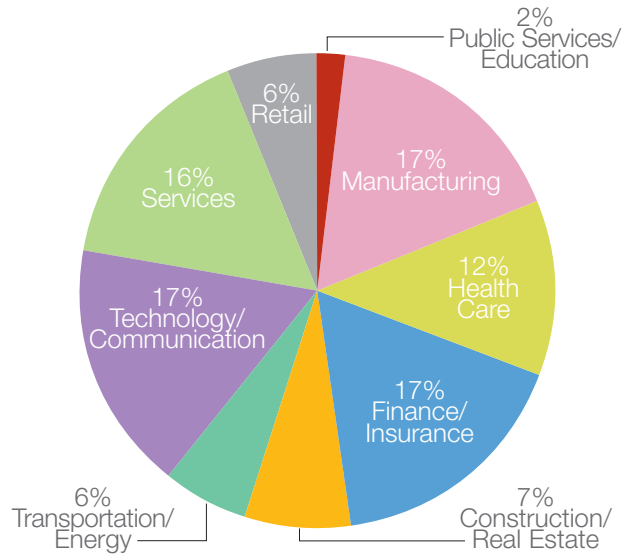
### EMBA Class Profile

Class Profile	
Total number of participants (3 classes)	161
Average age	38.3
Average work experience (years)	14.4
Average management experience (years)	9.3
Percentage female	22%
Percentage with 2 or more degrees	14%
Percentage with 3 or more degrees	1%
% with professional designation	20%

### EMBA Participant Position

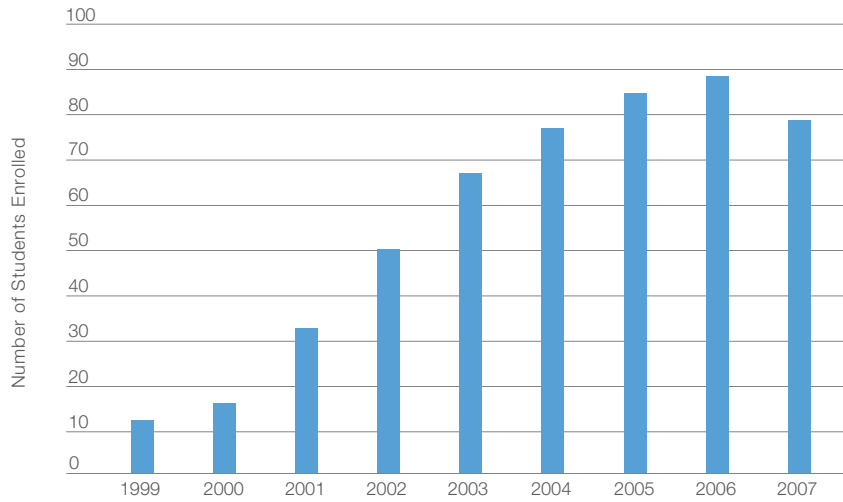


### EMBA Participant Industry

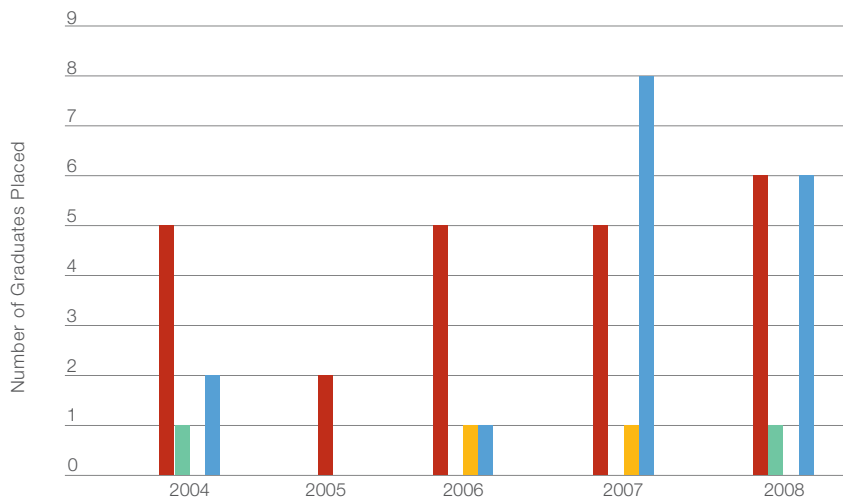


# PhD Program at a Glance

Enrollment 1999 to 2007 ■ Enrollment



Graduate Placements 2001-2008 ■ Canada ■ Europe ■ Asia-Pacific ■ USA







**The University of Western Ontario, London (Main Campus)**

The University of Western Ontario  
1151 Richmond Street North  
London, Ontario N6A 3K7  
Phone: (519) 661-3206 Fax: (519) 661-3485  
[www.ivey.uwo.ca](http://www.ivey.uwo.ca)

**Spencer Leadership Centre, London**

Dolce Conference Centre  
551 Windermere Road  
London, Ontario N5X 2T1  
Phone: (519) 679-4546 Fax: (519) 645-0733  
E-mail: [info\\_iveyspencer@dolce.com](mailto:info_iveyspencer@dolce.com)  
Main Number & Room Reservations: (519) 679-4546 Fax: (519) 645-0733  
General Manager: (519) 675-5532  
Conference Planning: (519) 675-5545 Fax: (519) 858-1553  
Dining Room Reservations: (519) 675-5545  
[www.dolce.com](http://www.dolce.com)

**ING Leadership Centre, Toronto**

Exchange Tower  
130 King Street West, P.O. Box 31  
Toronto, ON M5X 1A9  
Phone: (416) 861-9600  
Ivey contact Susie Ferlisi: [sferlisi@ivey.uwo.ca](mailto:sferlisi@ivey.uwo.ca)  
Alumni and Corporate contact Janice Matthews: [jmatthews@ivey.uwo.ca](mailto:jmatthews@ivey.uwo.ca)  
[www.ivey.uwo.ca/toronto](http://www.ivey.uwo.ca/toronto)

**Cheng Yu Tung Management Institute, Hong Kong**

Hong Kong Convention & Exhibition Centre  
Phase One, 5/F 1 Harbour Road  
Wanchai, Hong Kong  
Tel: (852) 2808-4488 Fax: (852) 2808-4433  
E-mail: (For EMBA enquiries) [emba@ivey.com.hk](mailto:emba@ivey.com.hk)  
(For Executive Programs) [executives@ivey.com.hk](mailto:executives@ivey.com.hk)  
[www.ivey.com.hk](http://www.ivey.com.hk)